

RG-RSR10-01G

copyright © 2022





/

2.

1

RSR10-01G

1.1 RSR10-01G

1.1.1 RSR10-01G

RSR10-01G

32 RISC
RSR10-01G

RSR10-01G
RSR10-01G-C

3G

WCDMA CDMA2000

RSR10-01G-W

1.1.2 RSR10-01G

■

1 1 console RJ45

■

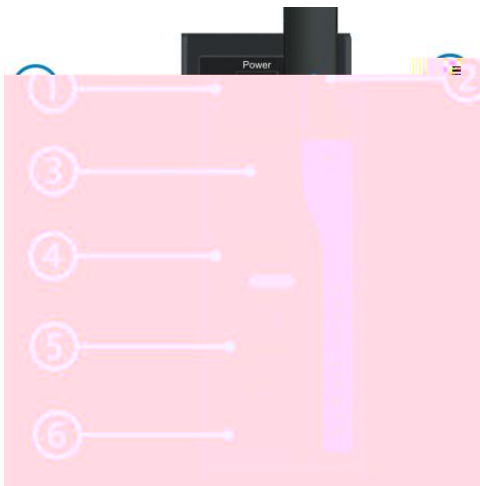
■

■

■

1.1.3 RSR10-01G

RSR10-01G



1		2	SMA
3		4	
5	Console	6	FE RJ45

3 6

SYS	
PWR	
WWAN	
Link/ACT	
100M	100Mbps 10Mbps

1.1.4 RSR10-01G

RSR10-01G

	RSR10-01G
	1 Console 1 10/100M
	RISC
SDRAM	128MB
Boot Rom	2MB

NAND FLASH	32MB
(W× H× D)	120mm× 46mm× 100mm
	100 240V 50~60Hz
	12W
	0 50
	-40 70
	10 90%RH

1.2.1

- RSR10-01G
- RJ45 ARP 802.1Q
- X.25 HDLC PPP SLIP
- TCP/IP IP ICMP IGMP TCP UDP
- IP RIP V1/V2 OSPF V1/V2
- SNMP

- Console
- TELNET
-

1.2.5

- IP
- AAA RADIUS
- PPP PAP CHAP callback
-
- OSPF RIP V2
- NAT
- IPSEC/IKE
- GRE
- VLAN

1.2.6

- X-MODEM (Windows XP Windows NT UNIX DOS)
- Console
-

RSR10-01G

- 0 ~50
- 10%~90%

	1.5m	0.4m
		

2.2.2

			3
()		7×10 ⁵	2.4×10 ⁵ 1.3×10 ⁵

SO₂ H₂S NO₂ NH₃ Cl₂

39.48 170.19 19.11 reW* n /P MCID 84BDC9 62.04

	mg/m ³
--	-------------------

-
-
-
-

2.2.4

-
-
-
-

2.2.5

-
-
-

2.2.6

/



18

24

2.2.7

■ DÇAvxÿ ôÆ\$Ø'¶QAPXÁÓÐ @

2.3

-
-
-
-
-
-
-
-
-
-
-
-



RSR10-01G

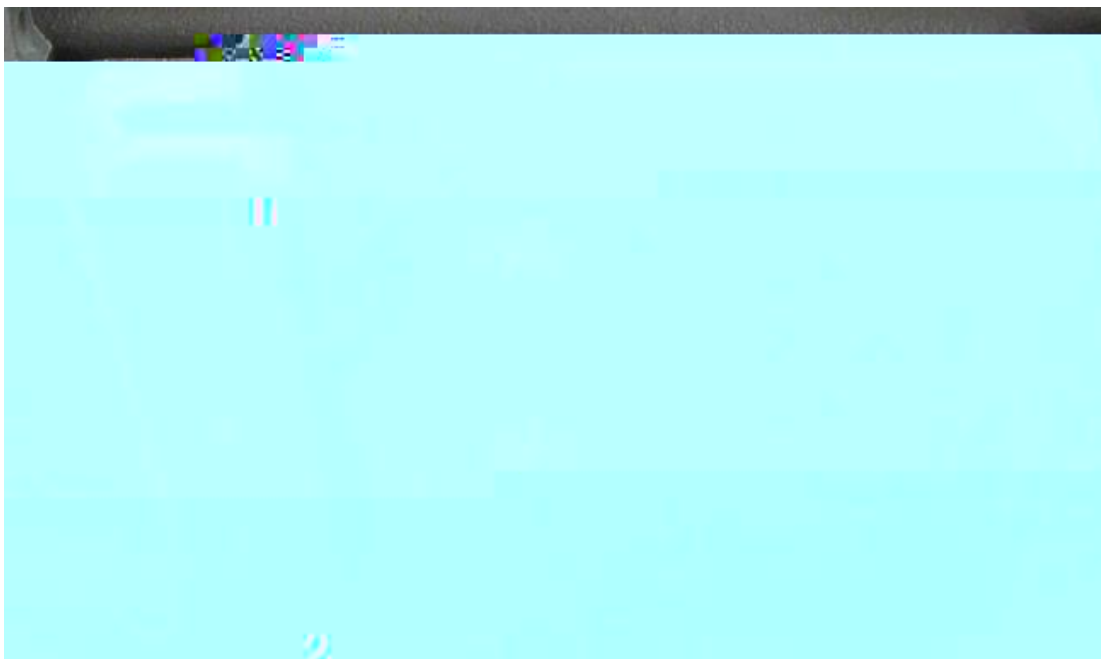
- HUB
-
-

PC

-

3.2.1

RSR10-01G



3.2.2

-
-
-

10cm

3.3

RSR10-01G

AC: 100~240V 50-60Hz

DC: 12V/1.25A



3.4

EIA/TIA-232

Console

	RJ-45
	EIA/TIA-232
	9600bps
	1
	2

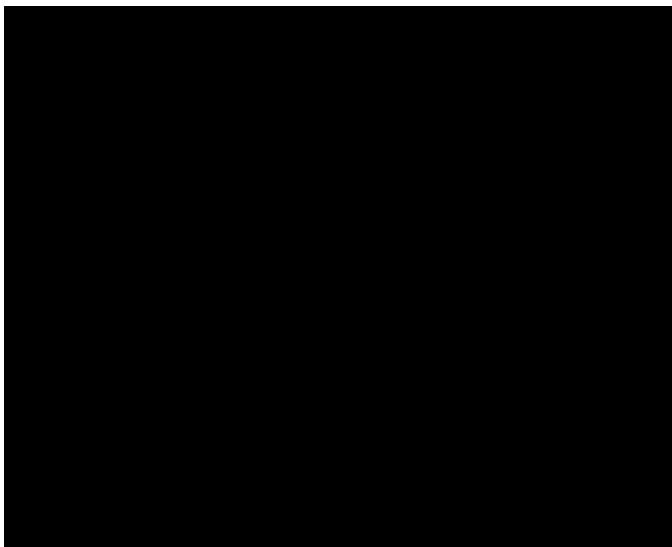
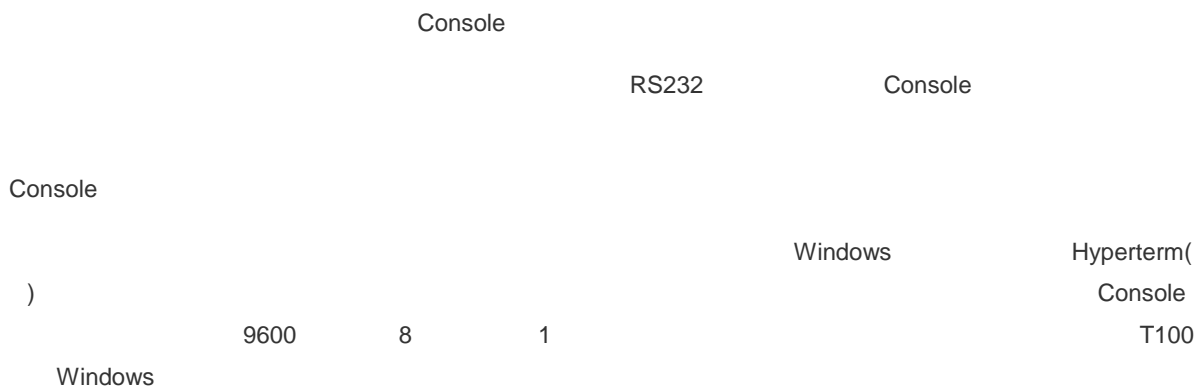
RJ45

DB-9

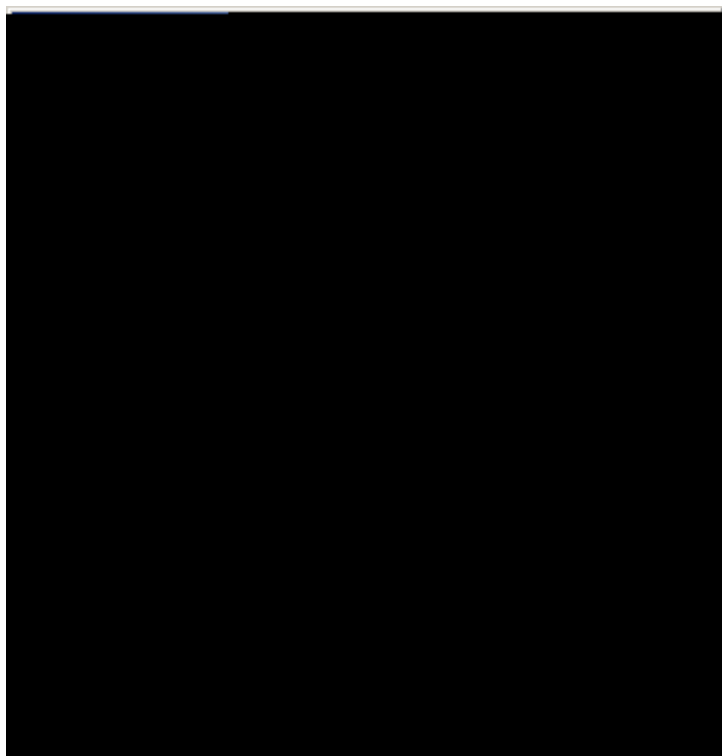
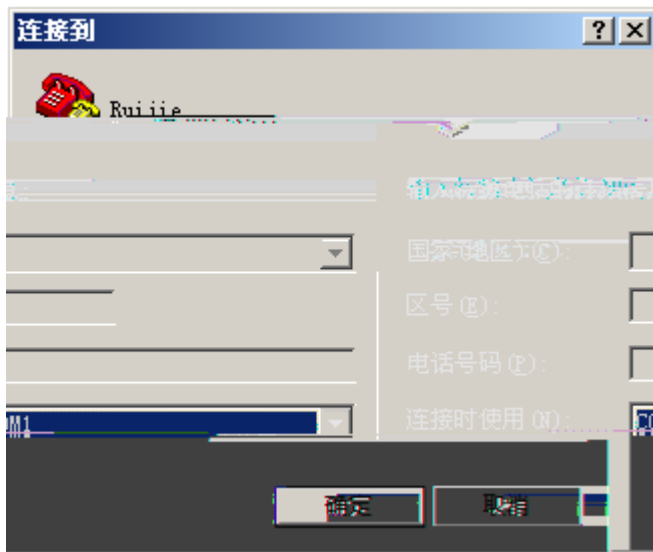
4

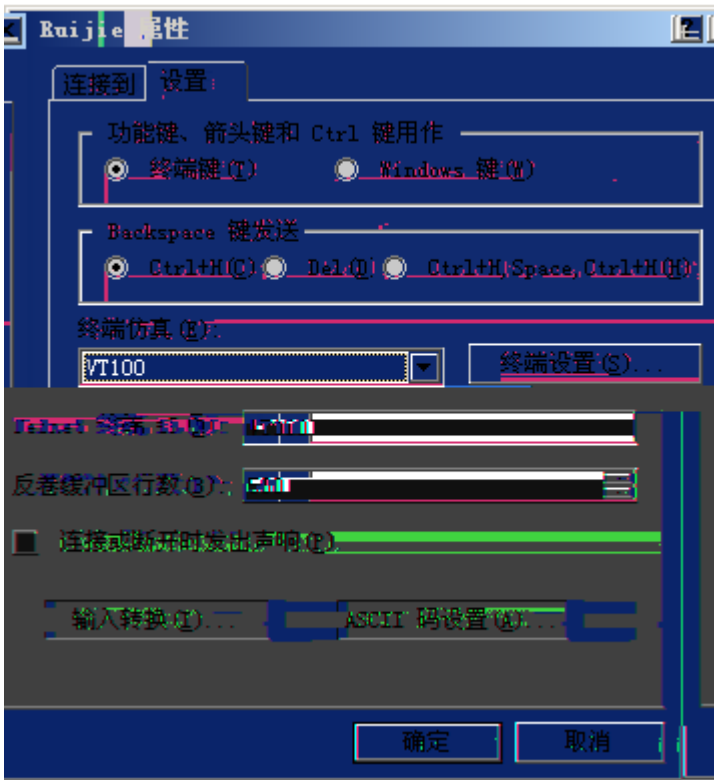
4.1

4.1.1



Console





4.1.2

4.1.2.1

-
-
-

4.1.2.2

4.1.2.3

-

- SYS
-
-

4.1.3

```
*****
System bootstrap ...
Boot Version: RGOS 10.3(5T30), Release(113148)
Nor Flash ID: 0x00010049, SIZE: 2097152Bytes
MTD_DRIVER-5-MTD_NAND_FOUND: 1 NAND chips(chip size : 33554432) detected
MTD_DRIVER-5-MTD_NAND_FOUND: 1 nand chip(s) found on the target.
Press Ctrl+C to enter Boot Menu .....
Main Program File Name rgos.bin, Load Main Program ...

Executing program, launch at: 0x00010000
Ruijie General Operating System Software
Re
```

5

5.1

RSR10-01G

PWR

-
-
-
-

SYS /PWR

5.2

-
-
-
-

1

VT100

9600

8



6

6.1

6.1.1 CONSOLE

CONSOLE RJ45 DB9F RJ45
RJ45-DB9 PC DB9M

6- 1 CONSOLE

	1	2	
CONSOLE	DB9F RJ45	/	PC DB9M

6.1.2

RSR10-01G ANT

RSR10-01G