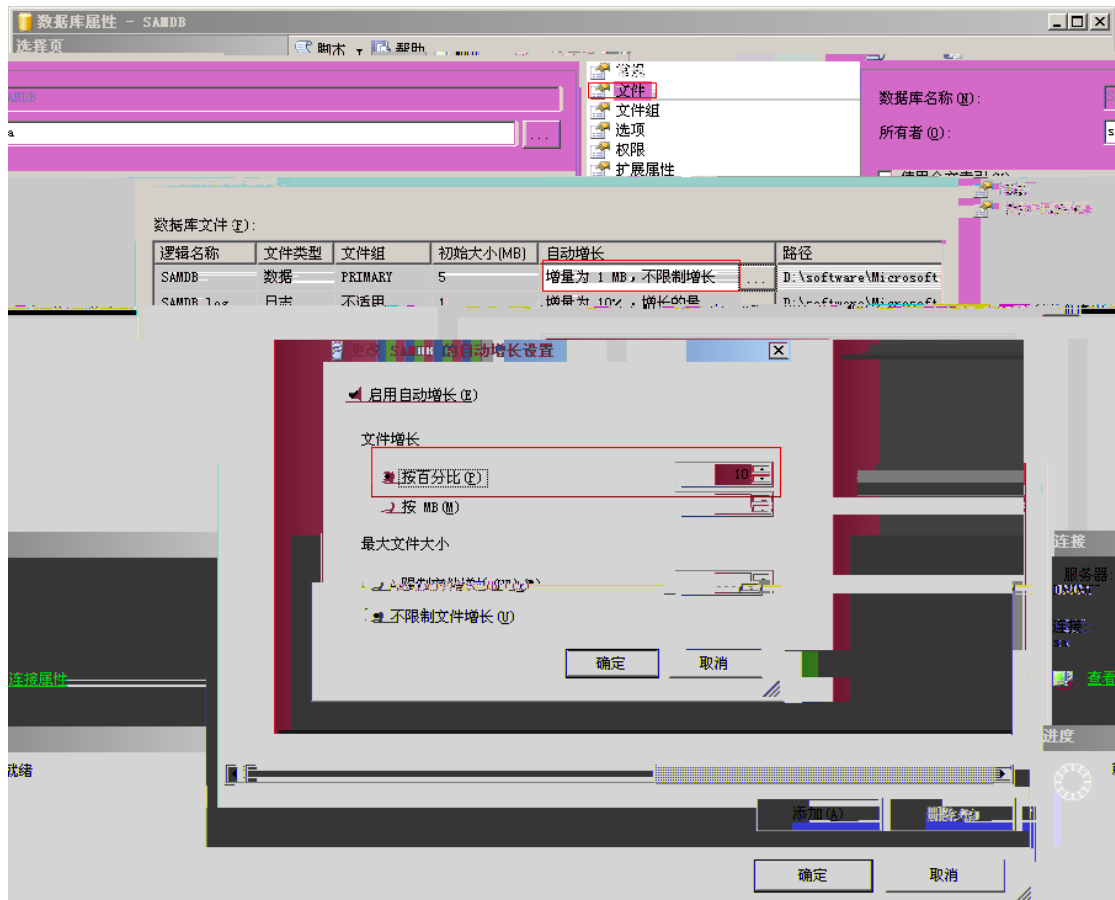
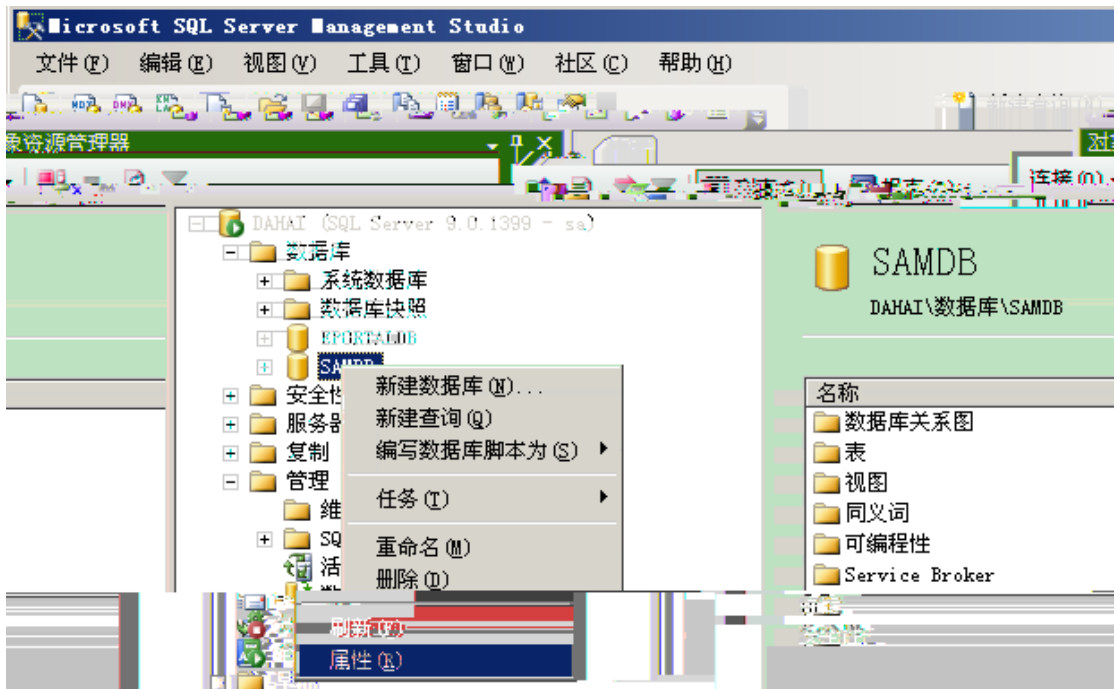


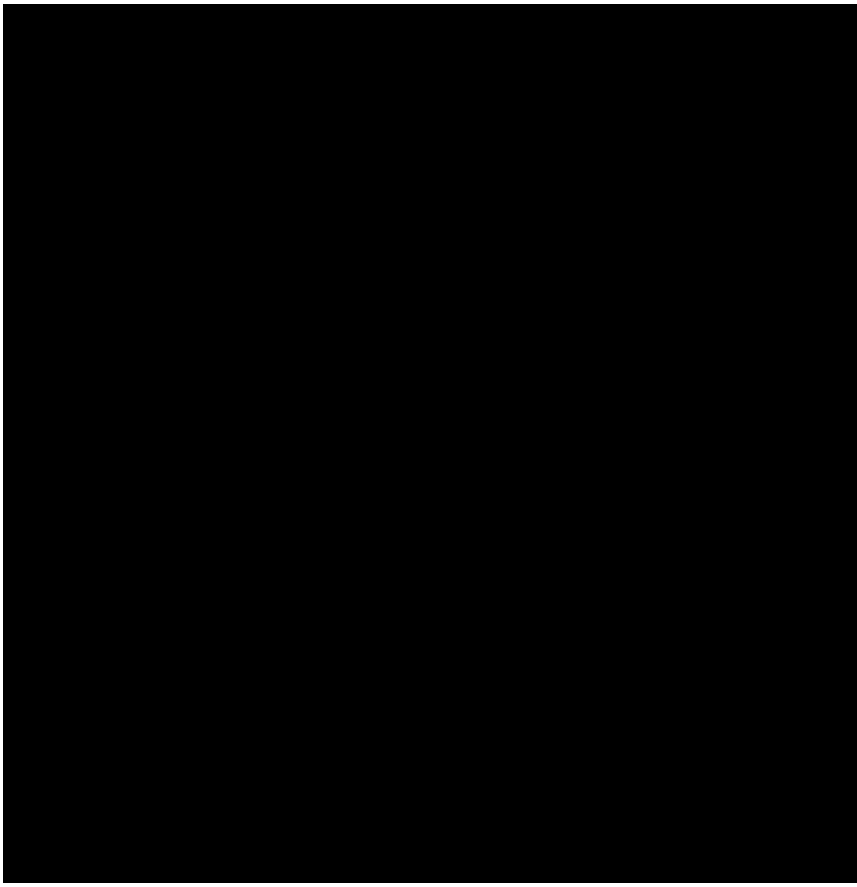
RG-SAM



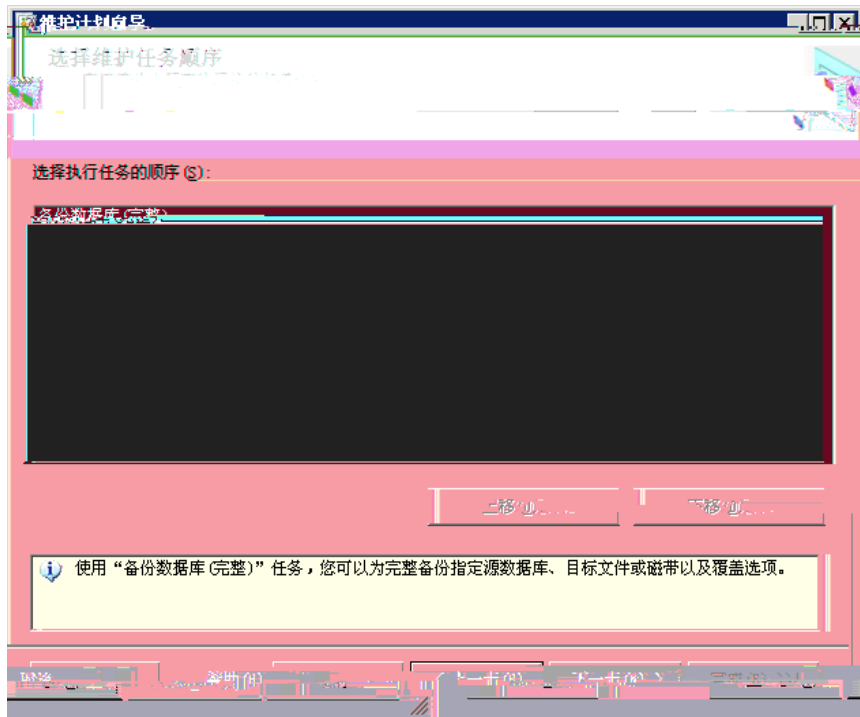
4.

" "

.

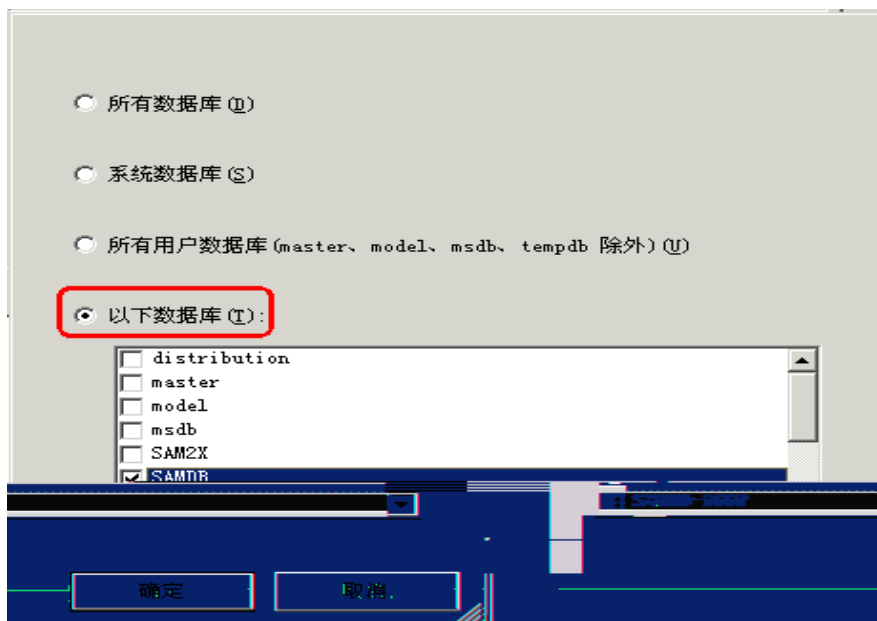
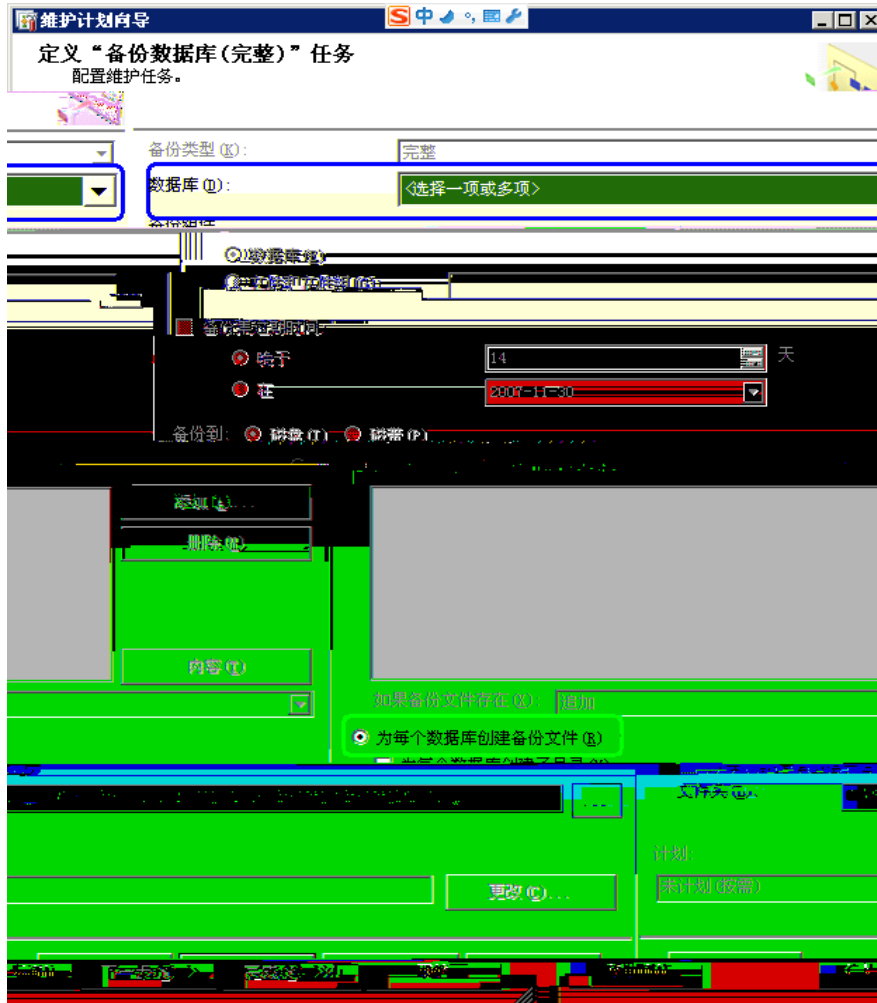


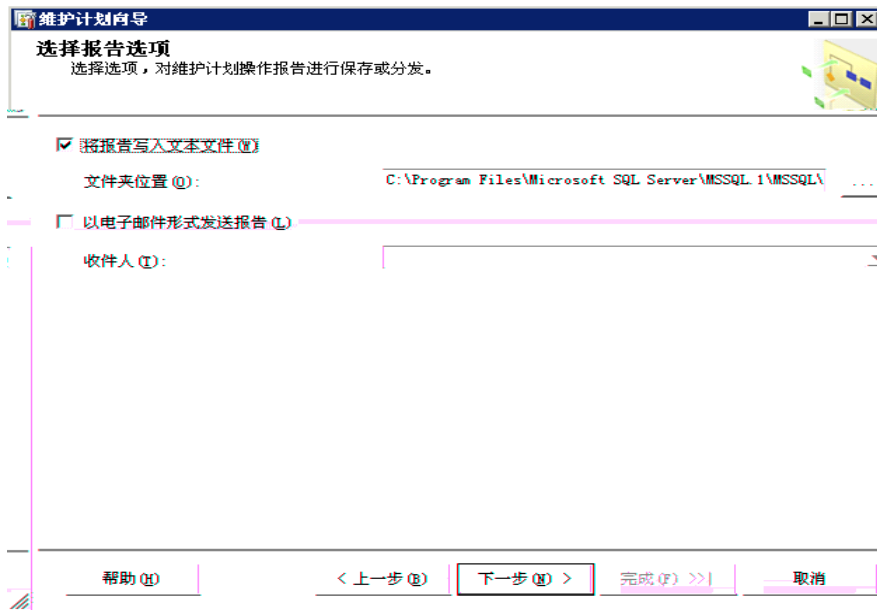
6.



7.

" "





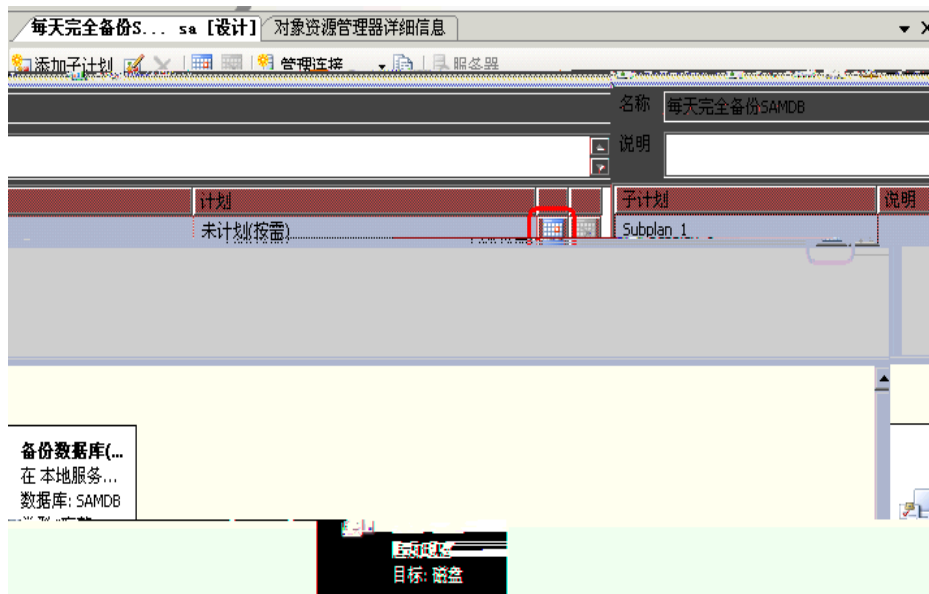
9.



10.



11.



SQL SERVER Agent

2

2

1. SQL Server Management Studio

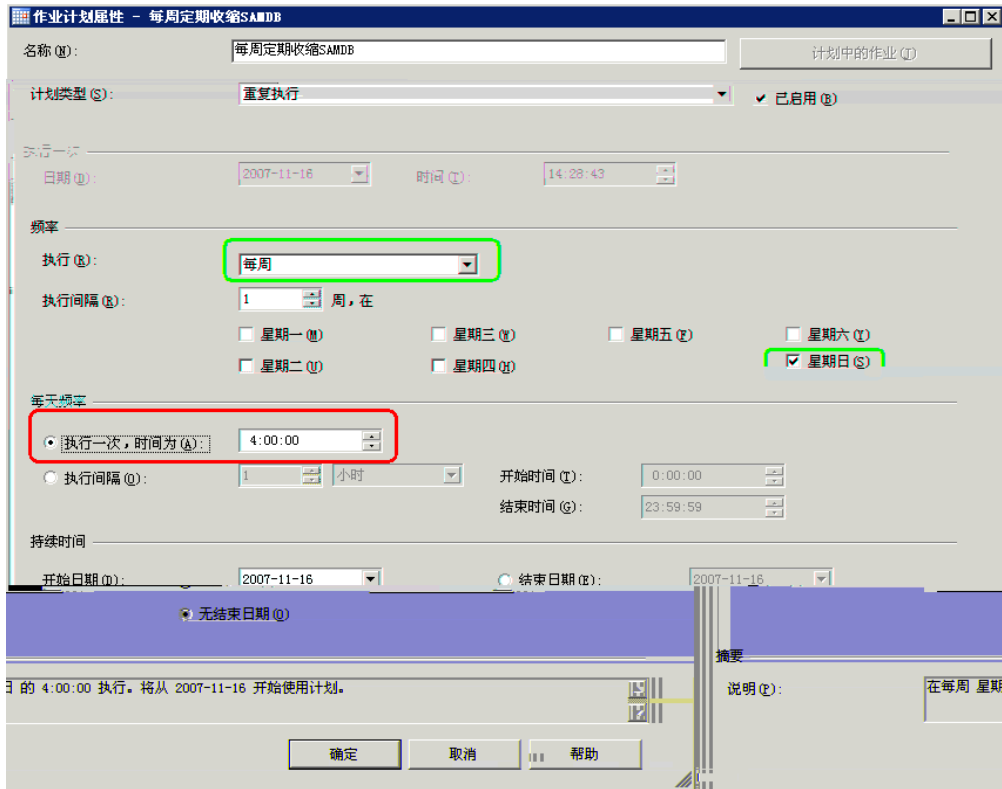
" "

2. " " "

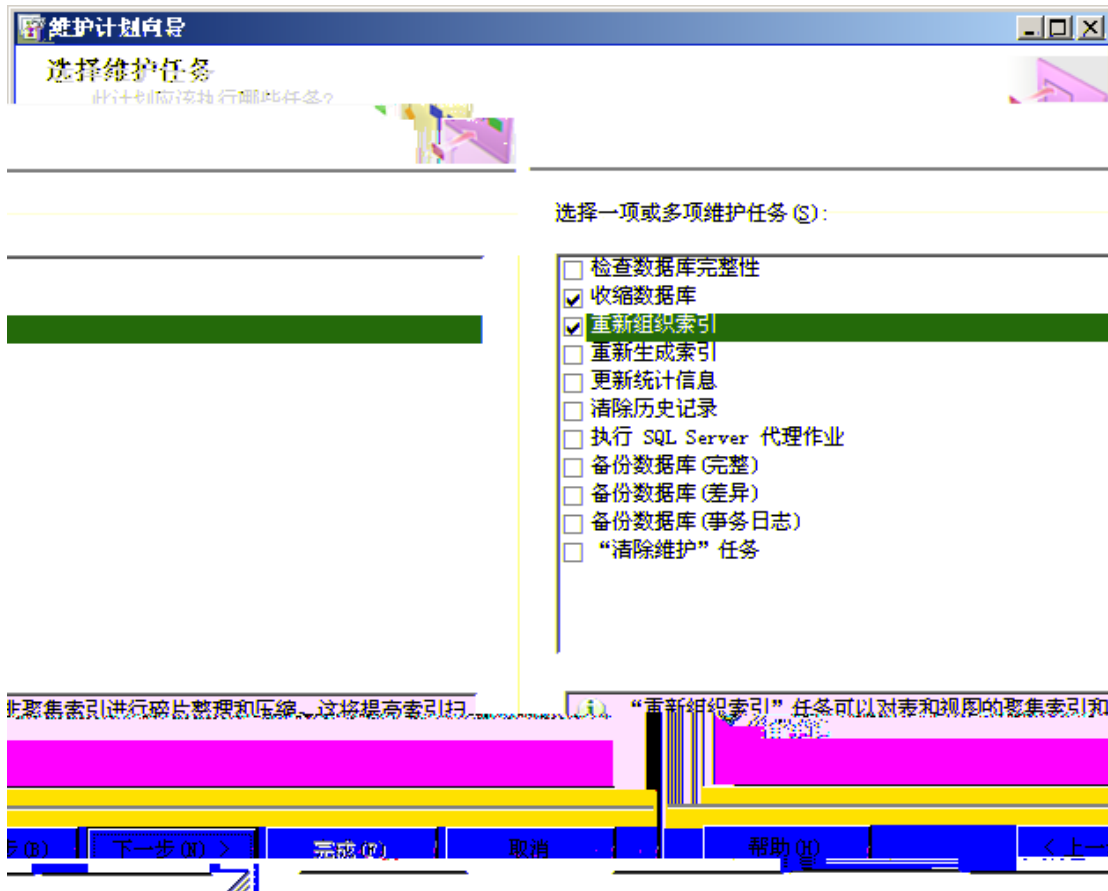


3.

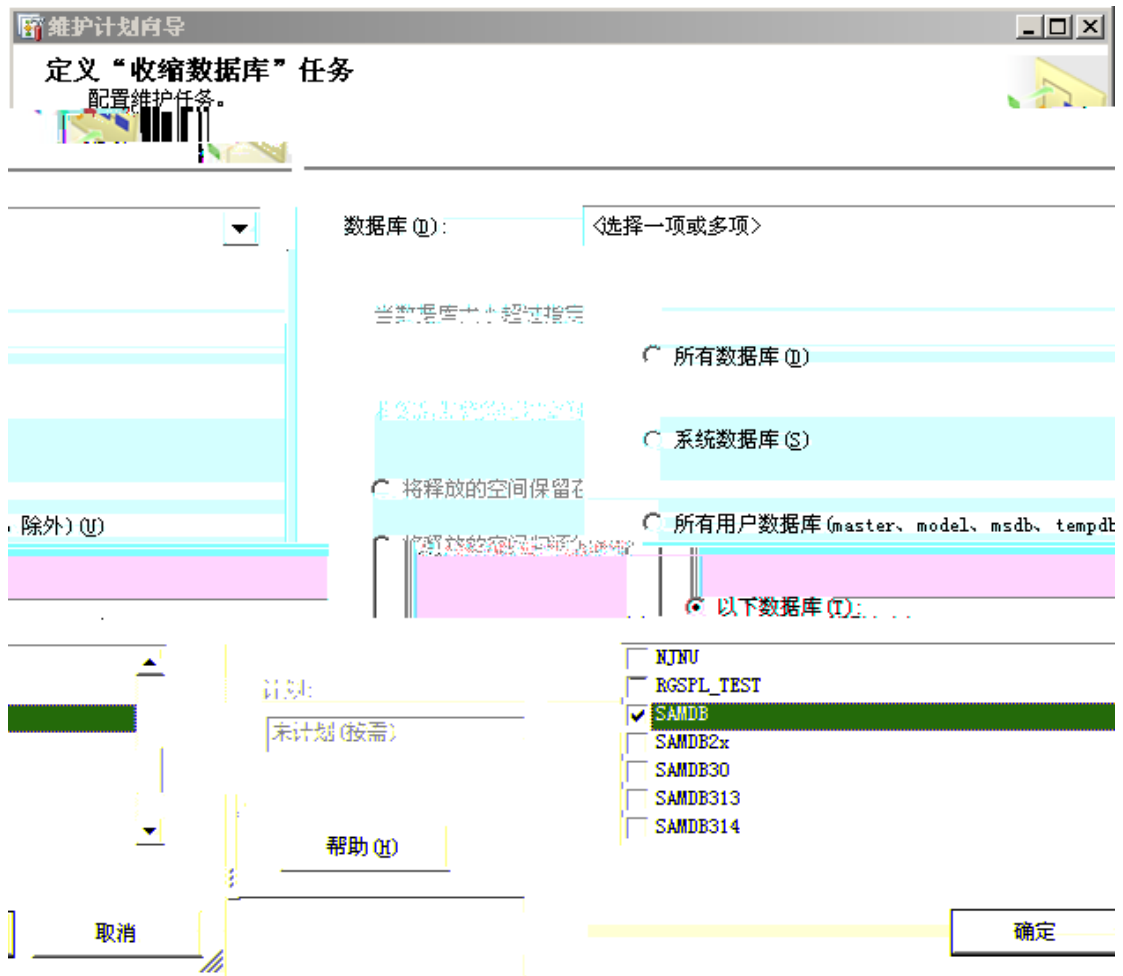




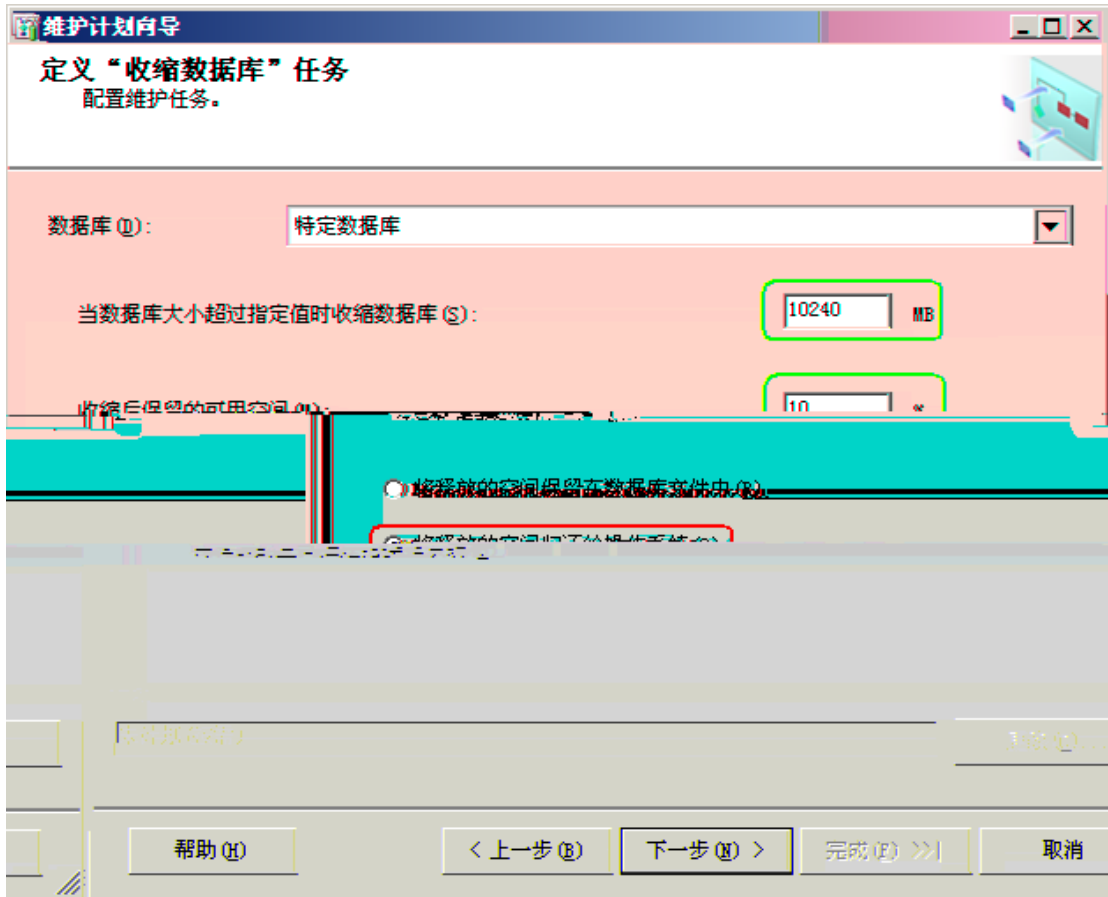
5.



6.



8. " " " 10240M
 10G " " " 10%

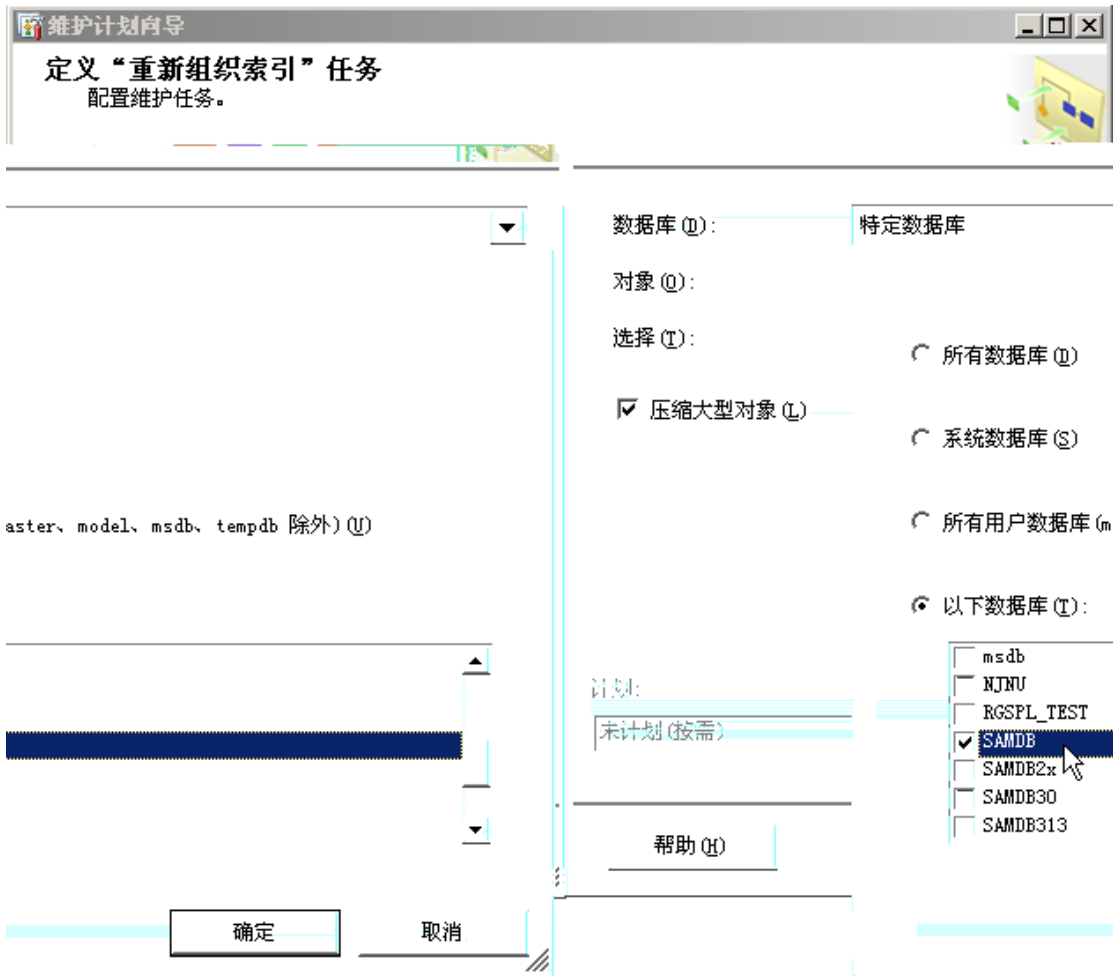


9.

" "

SAM

SAMDB

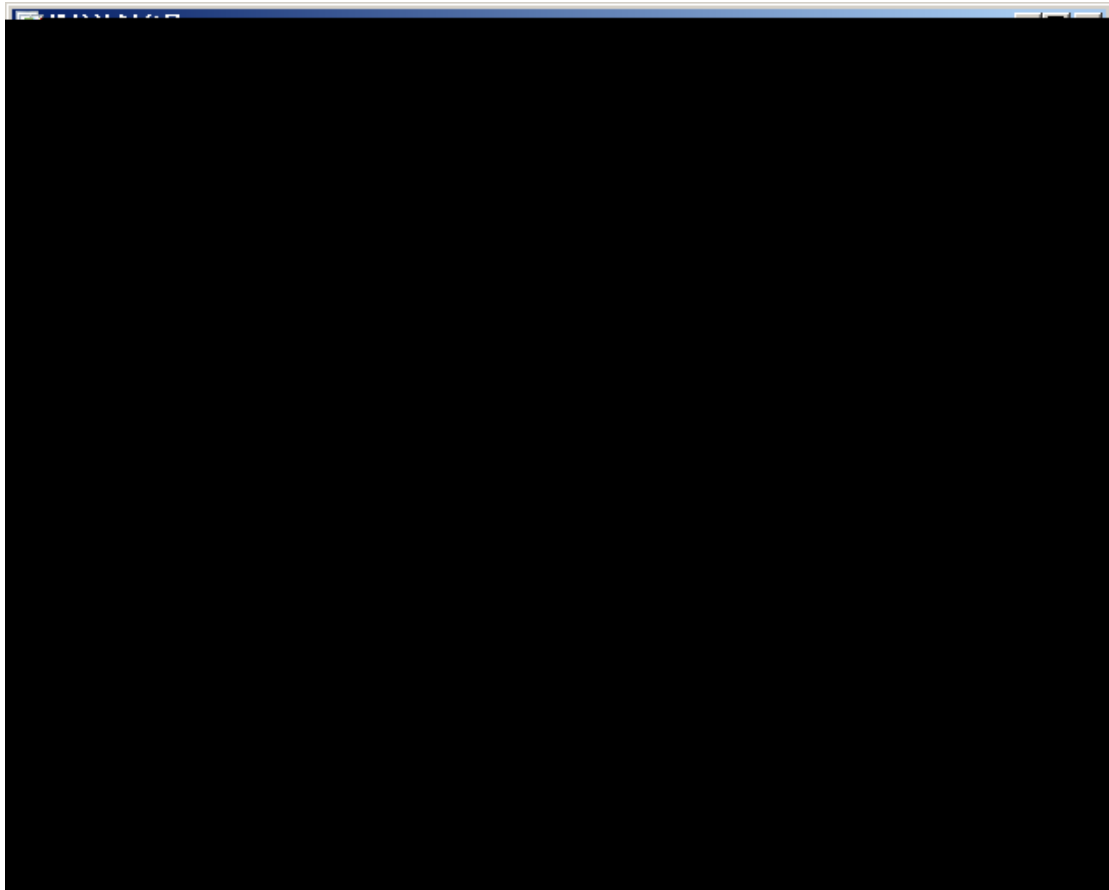


10. " " " " " " "

" " " " "



11. " "

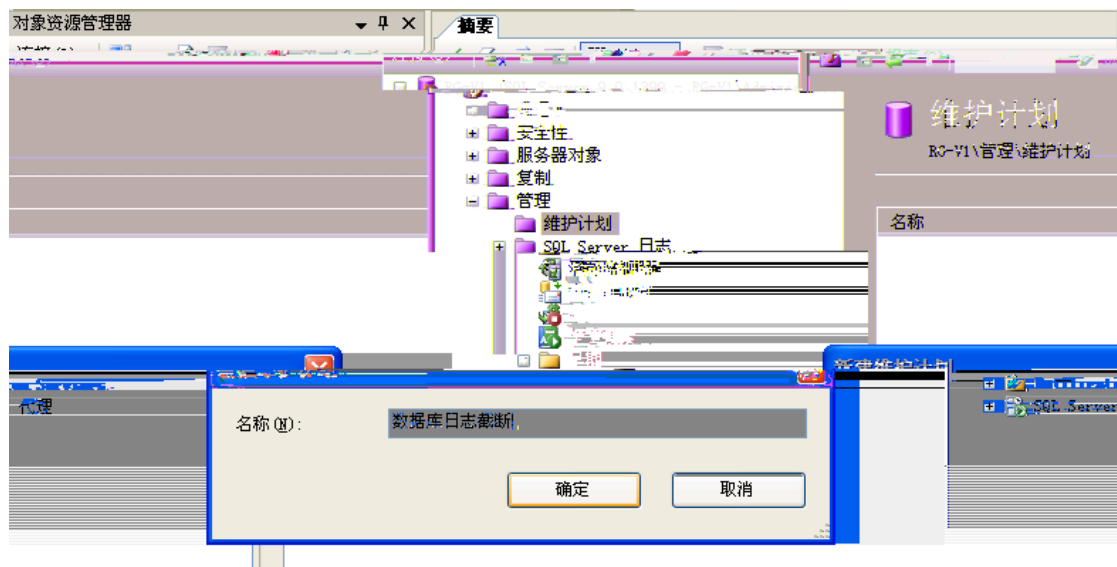


12.

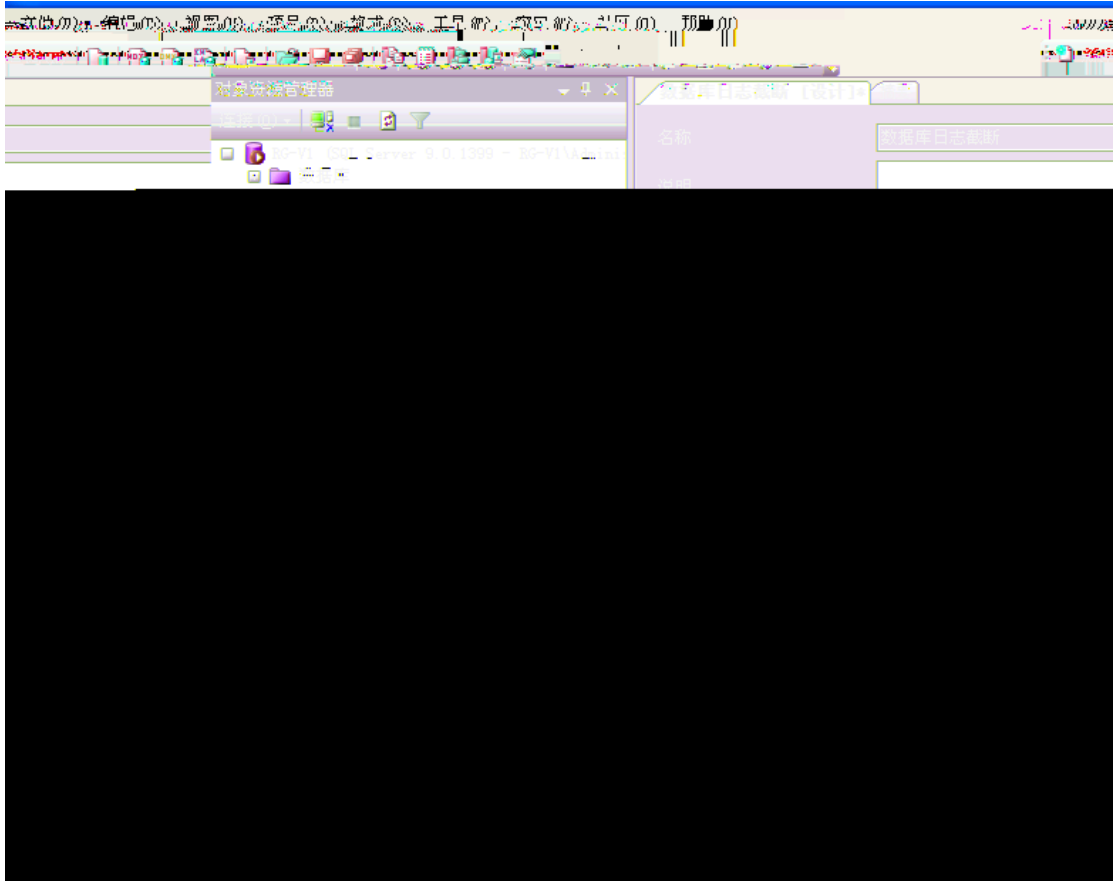
SQL SERVER Agent

1.

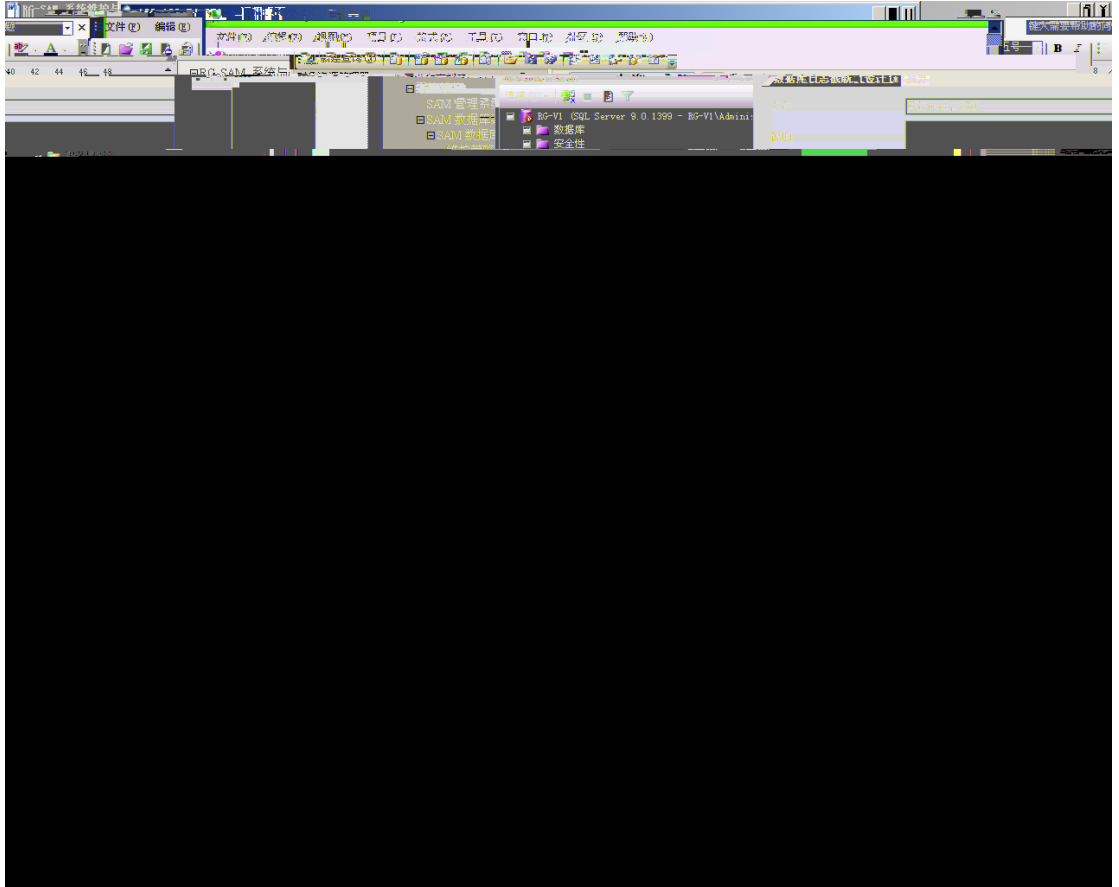
2.



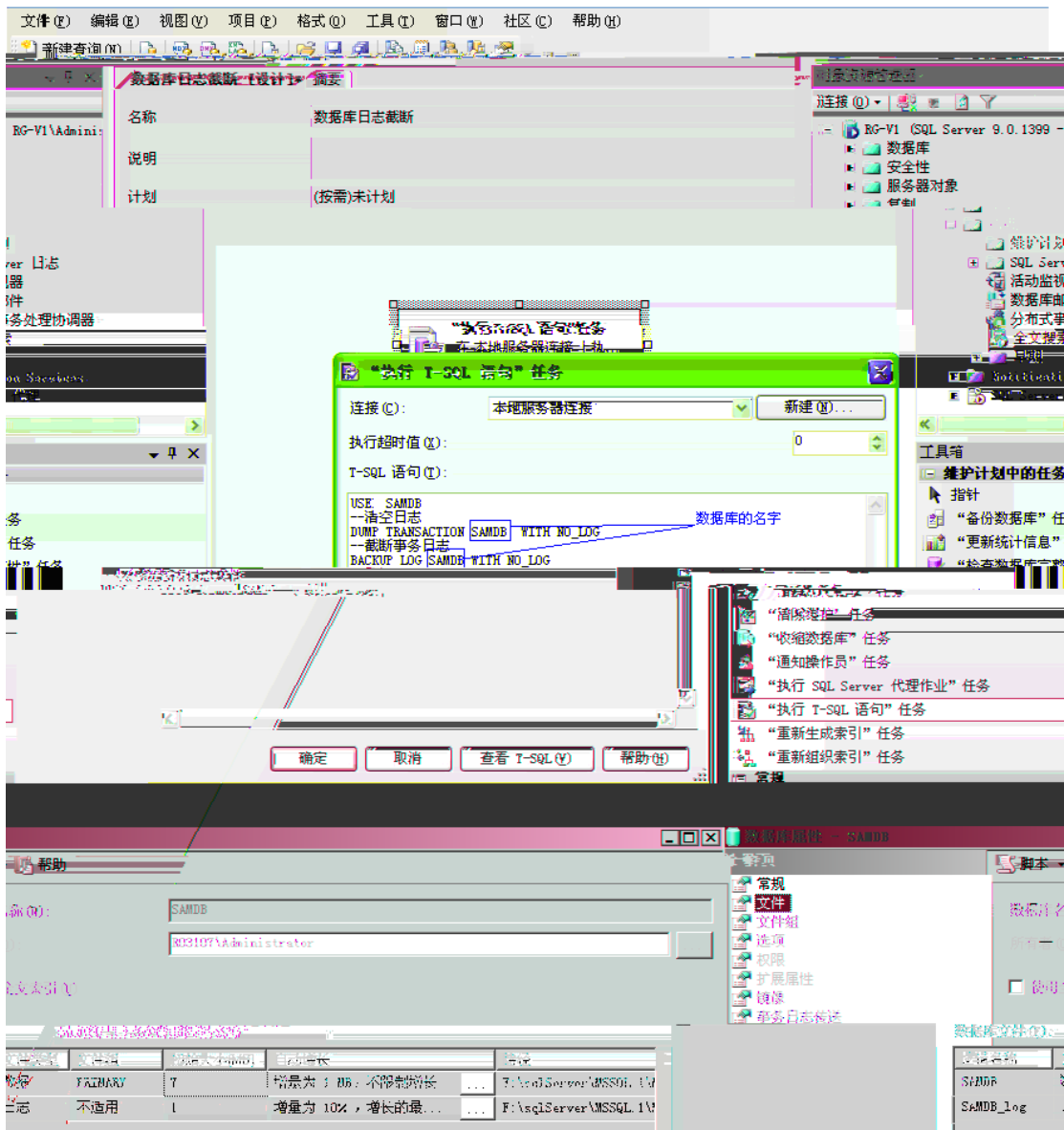
3.



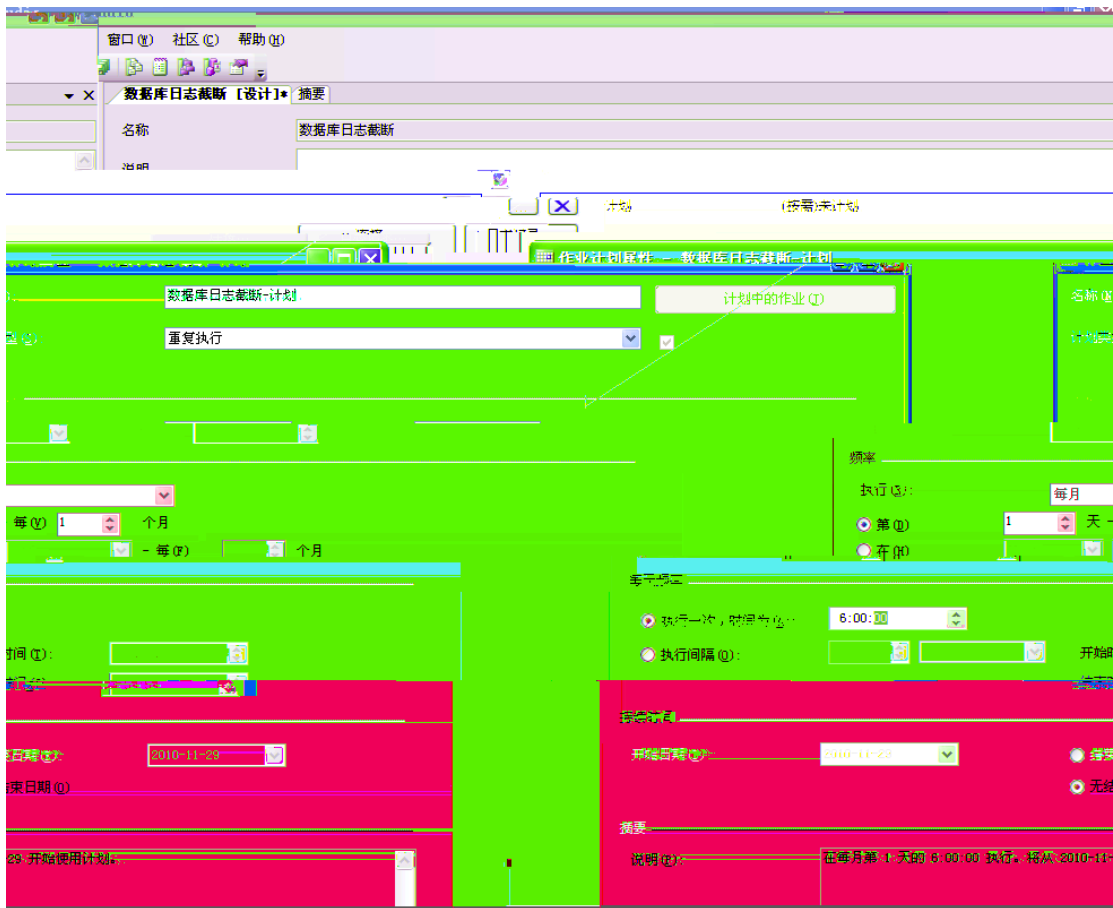
4.



5.



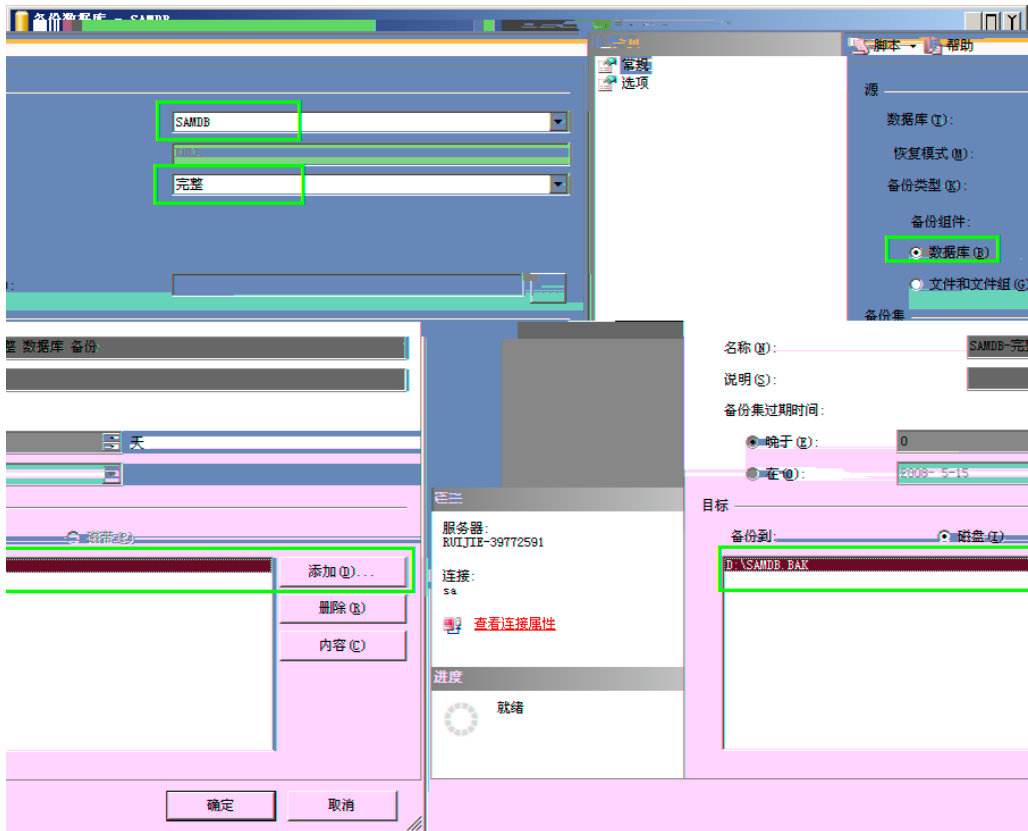
6.



7.



1. SQL Server Management Studio



3. " " " "

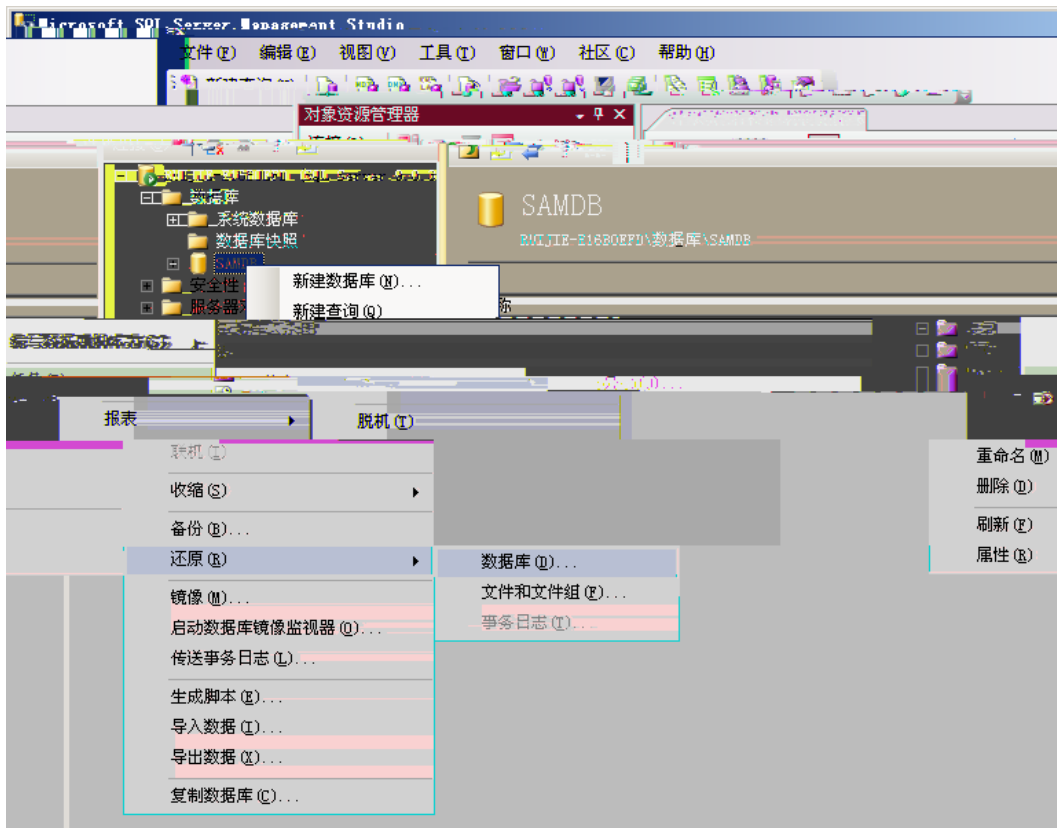


4.



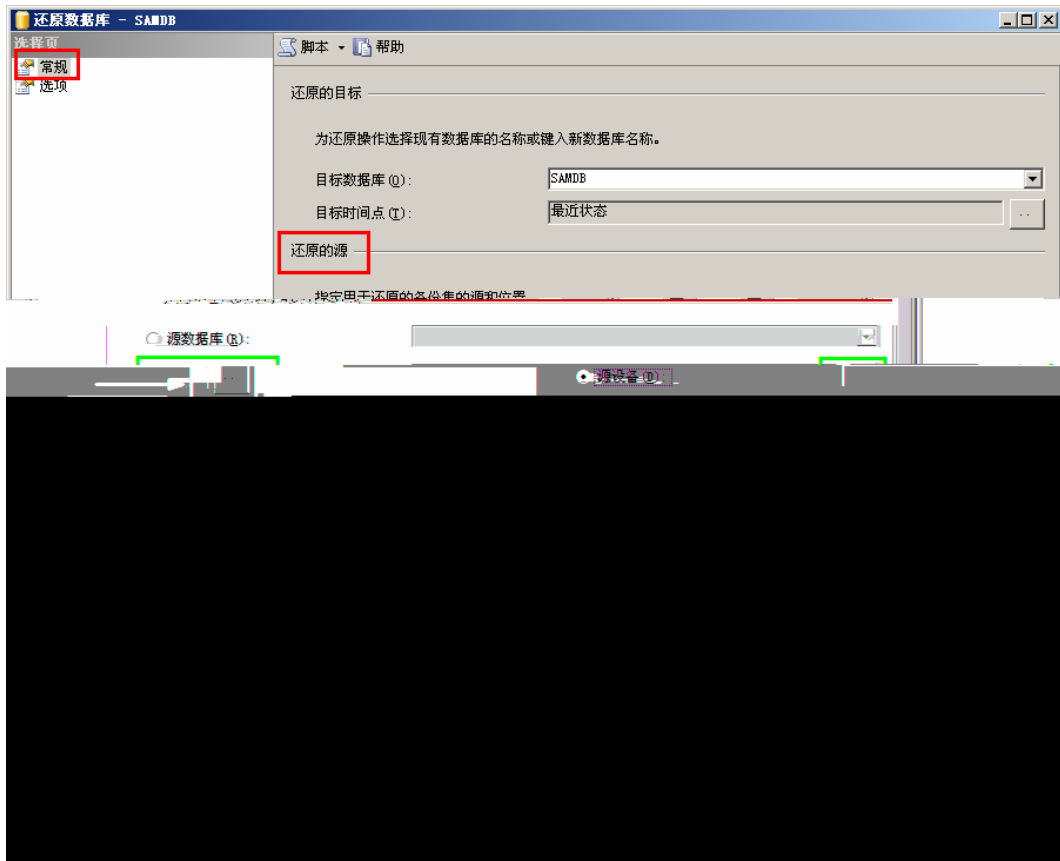
1. SQL Server Management Studio

" " " " " " "

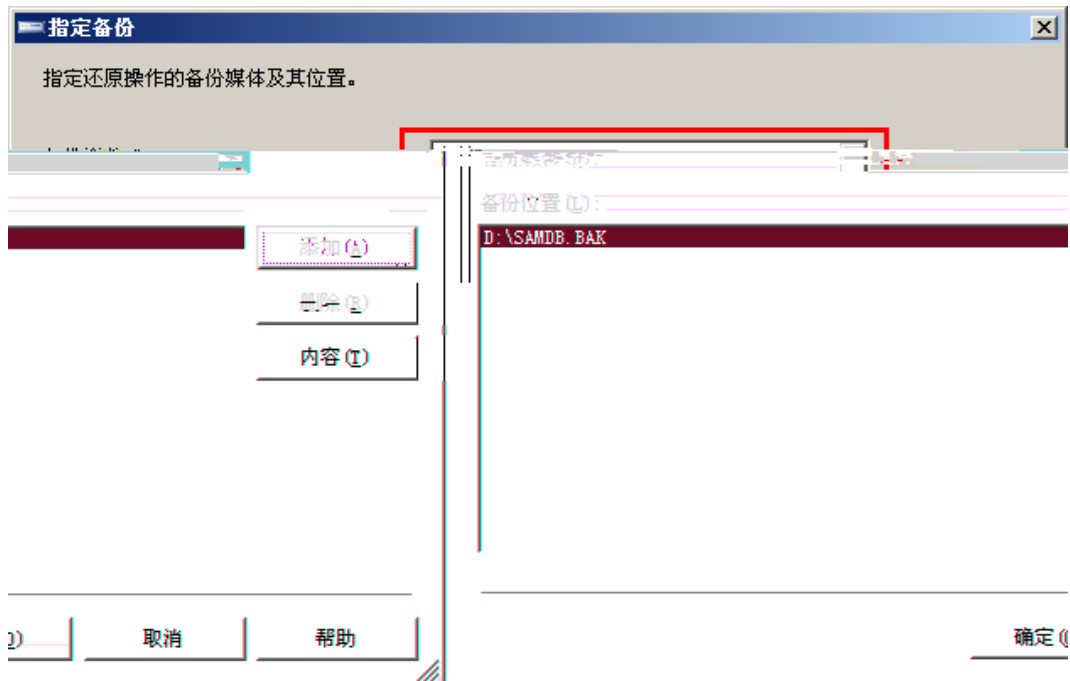


2.

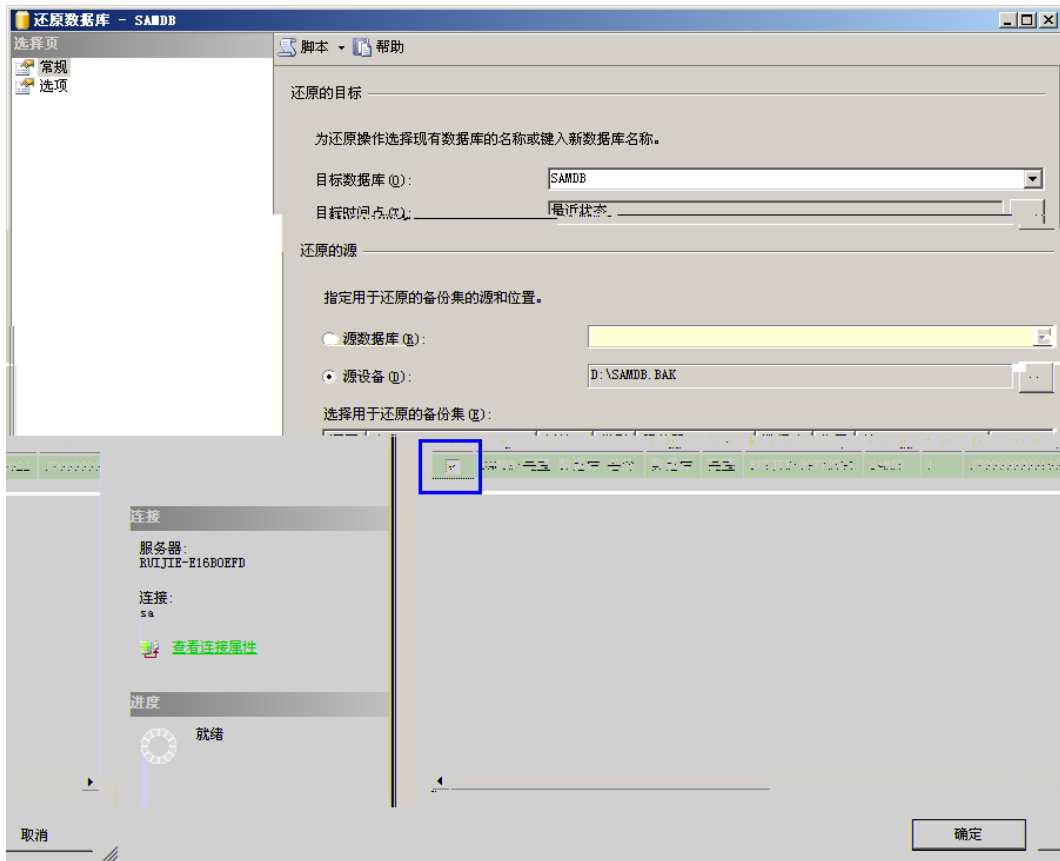
" " " " " " "



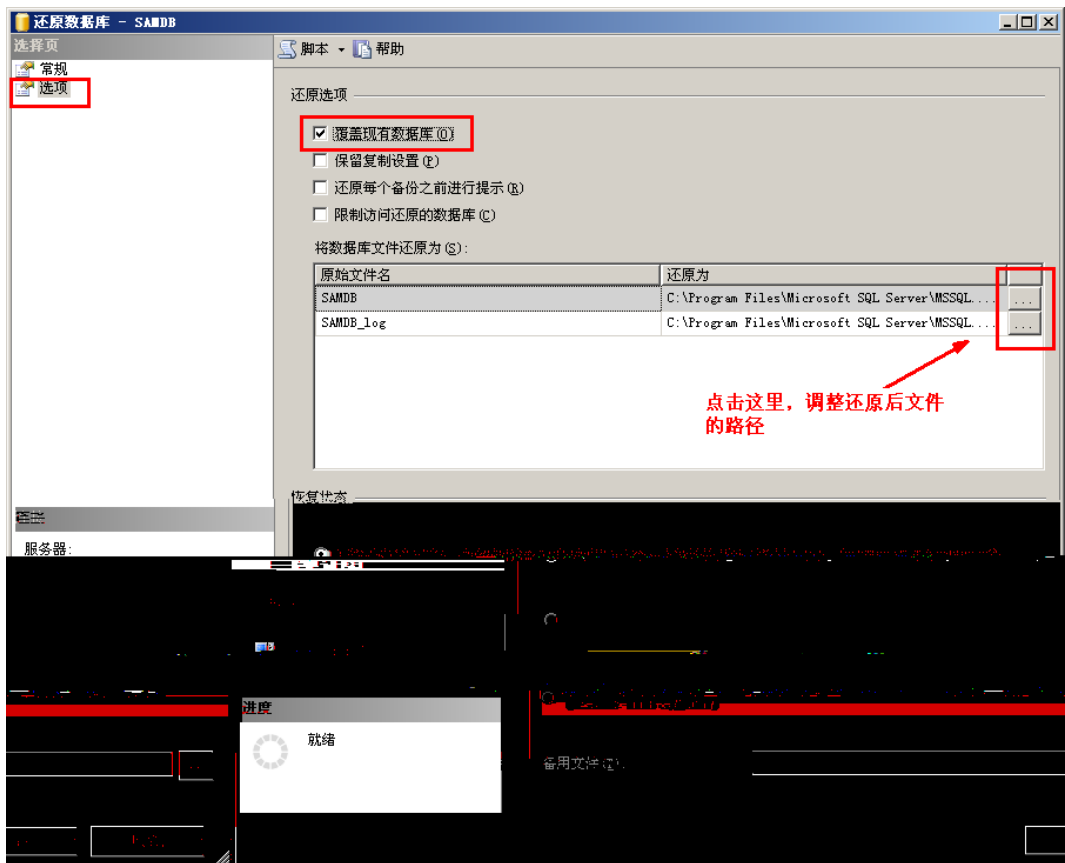
3. " " " "



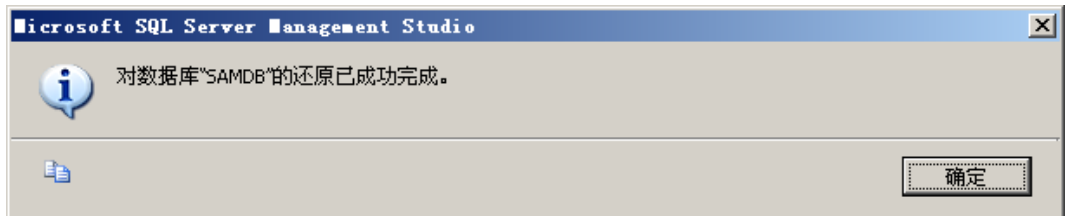
4.



5. " "

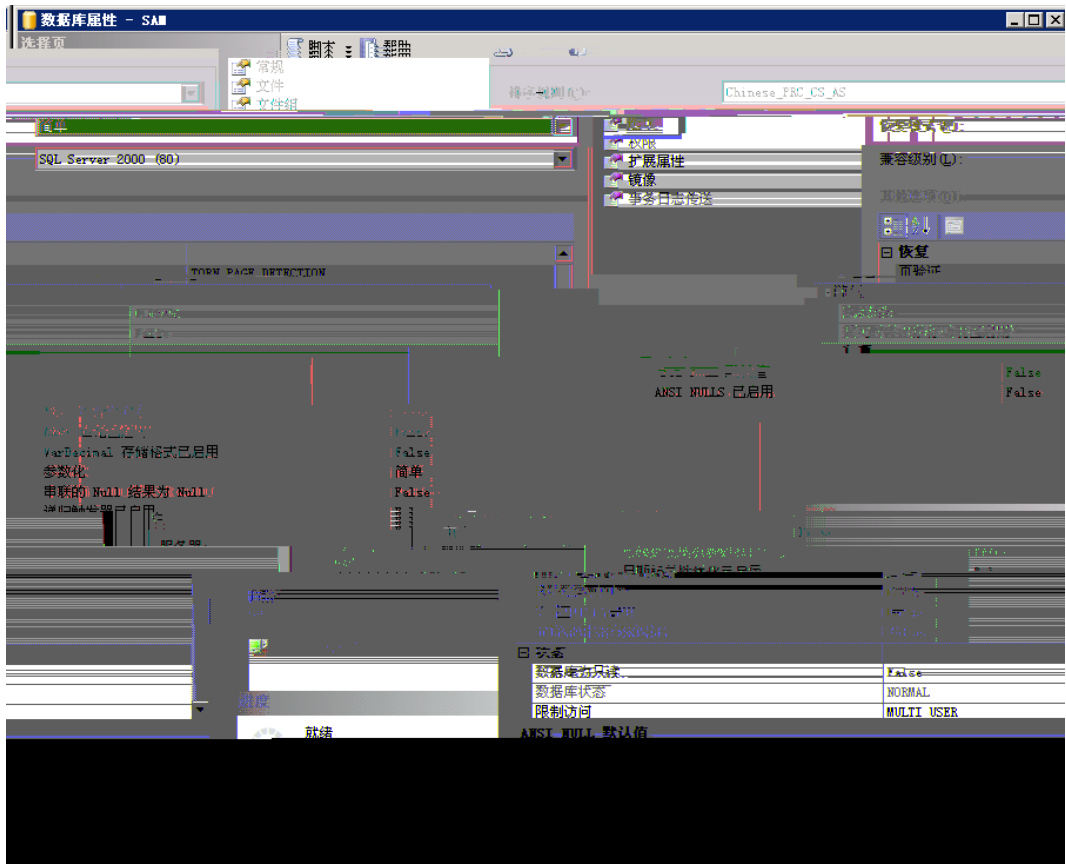


6. " "

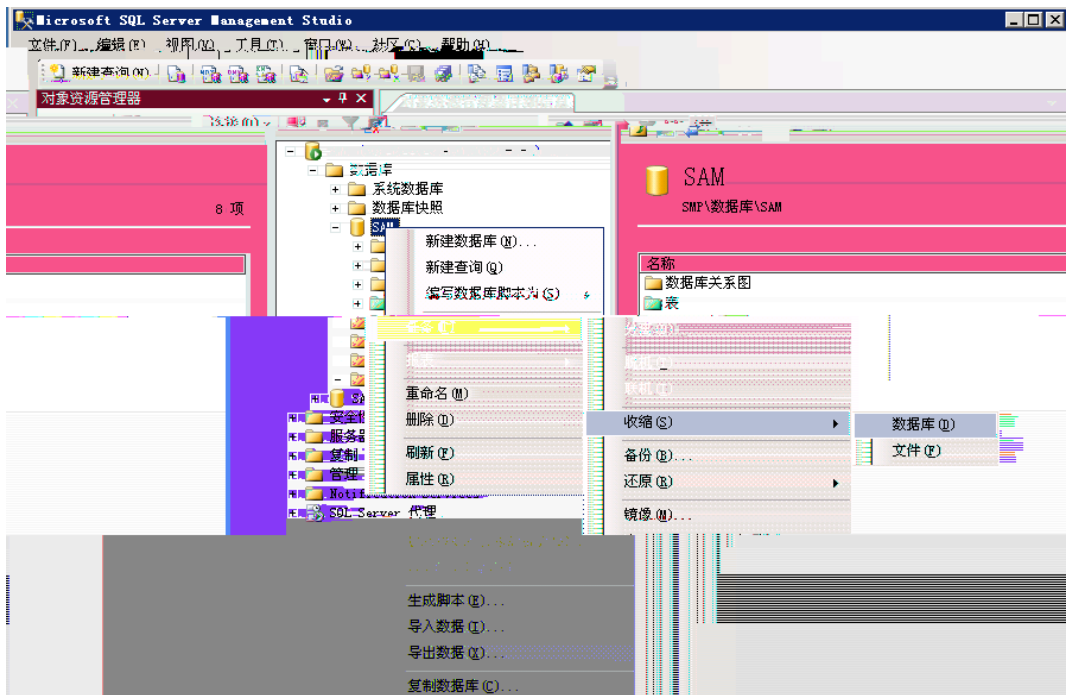


1.



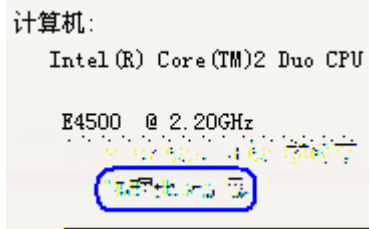


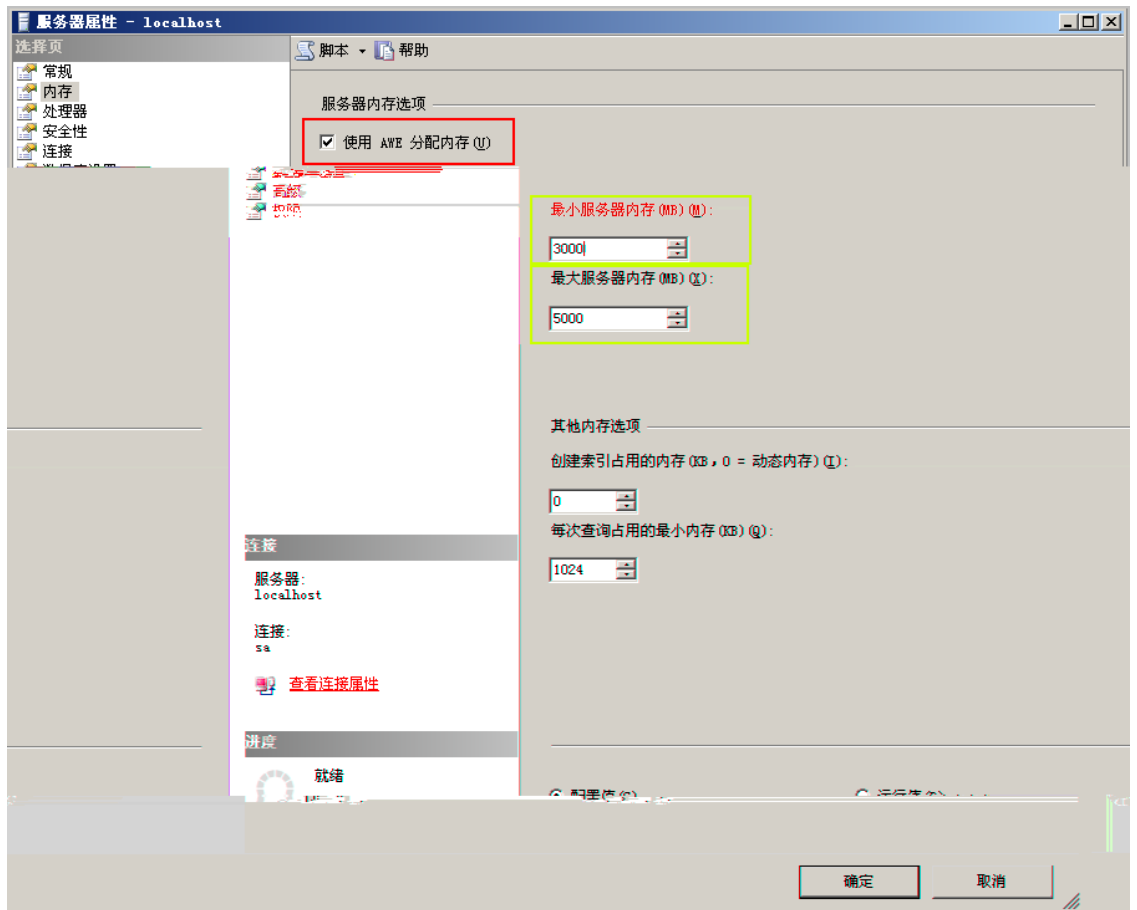
2.



3.

->





4GB

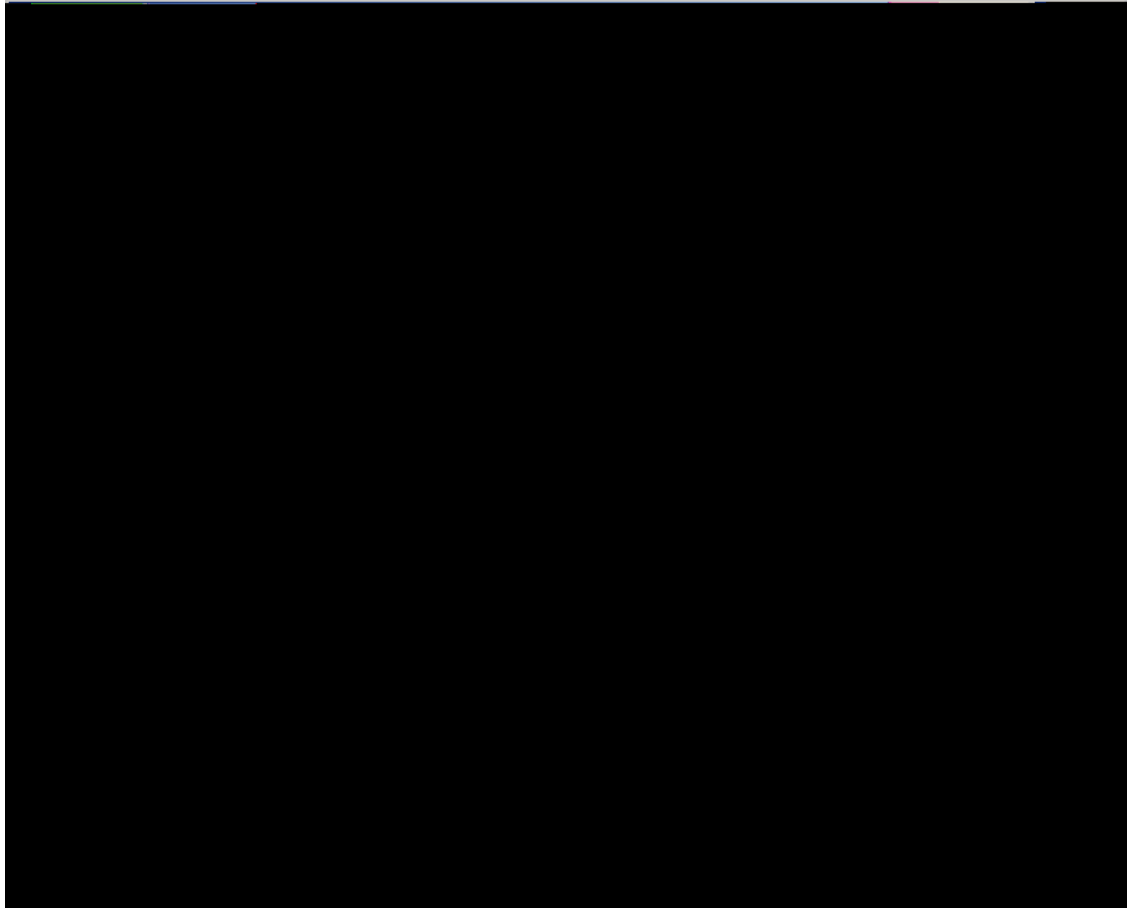
2G

"

AWE

"

1GB



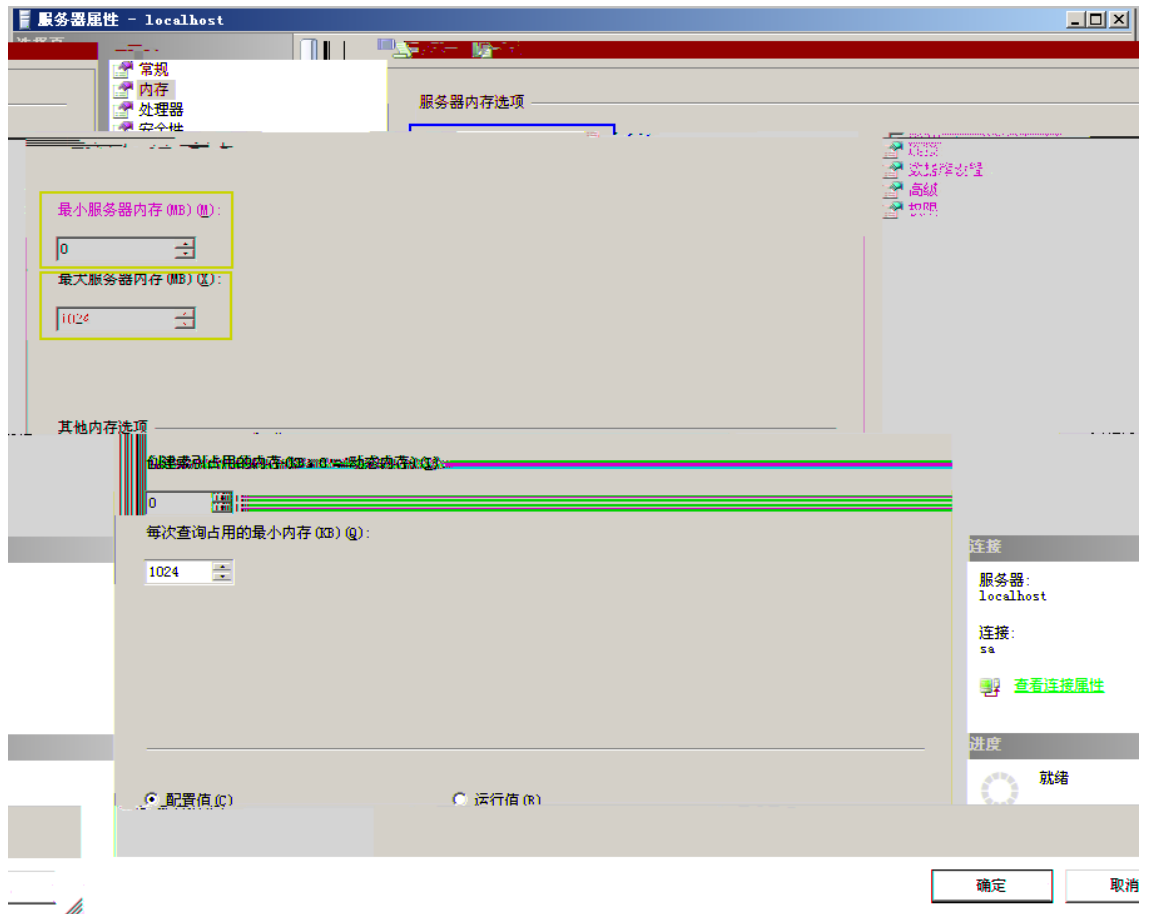
4GB

"

AWE

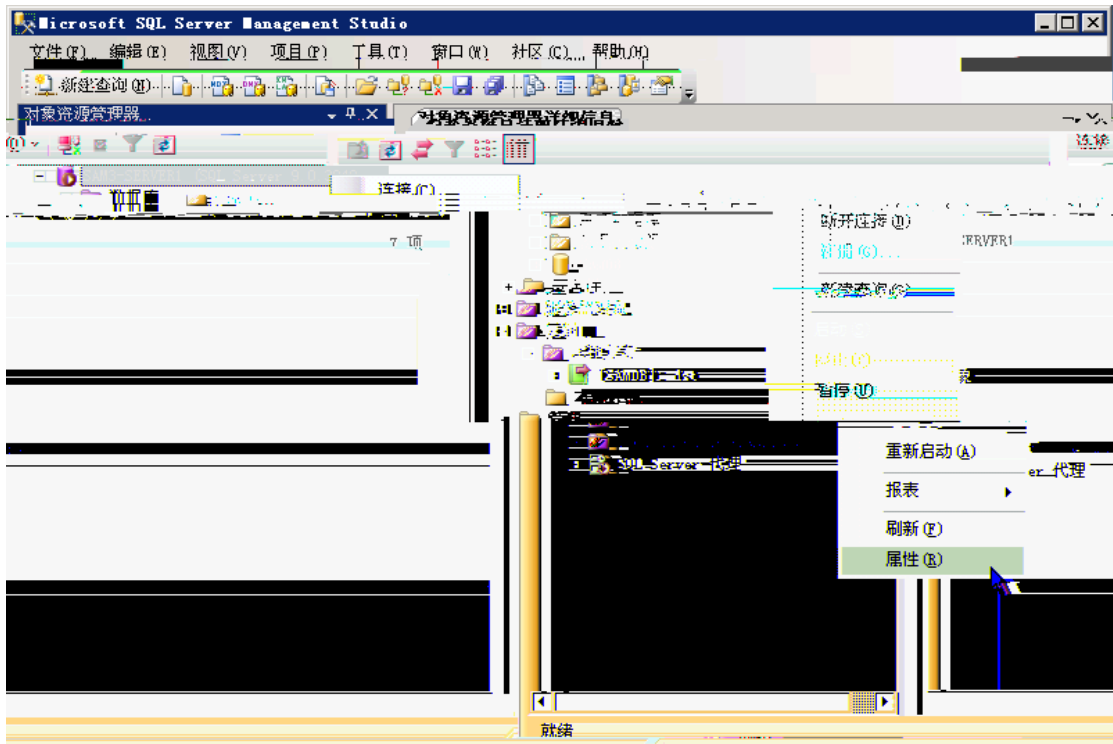
"

1GB



计算机:
Intel(R) Core(TM)2 Duo CPU
E4500 @ 2.20GHz
2.10 GB = 1.05 GB 的内存

1.

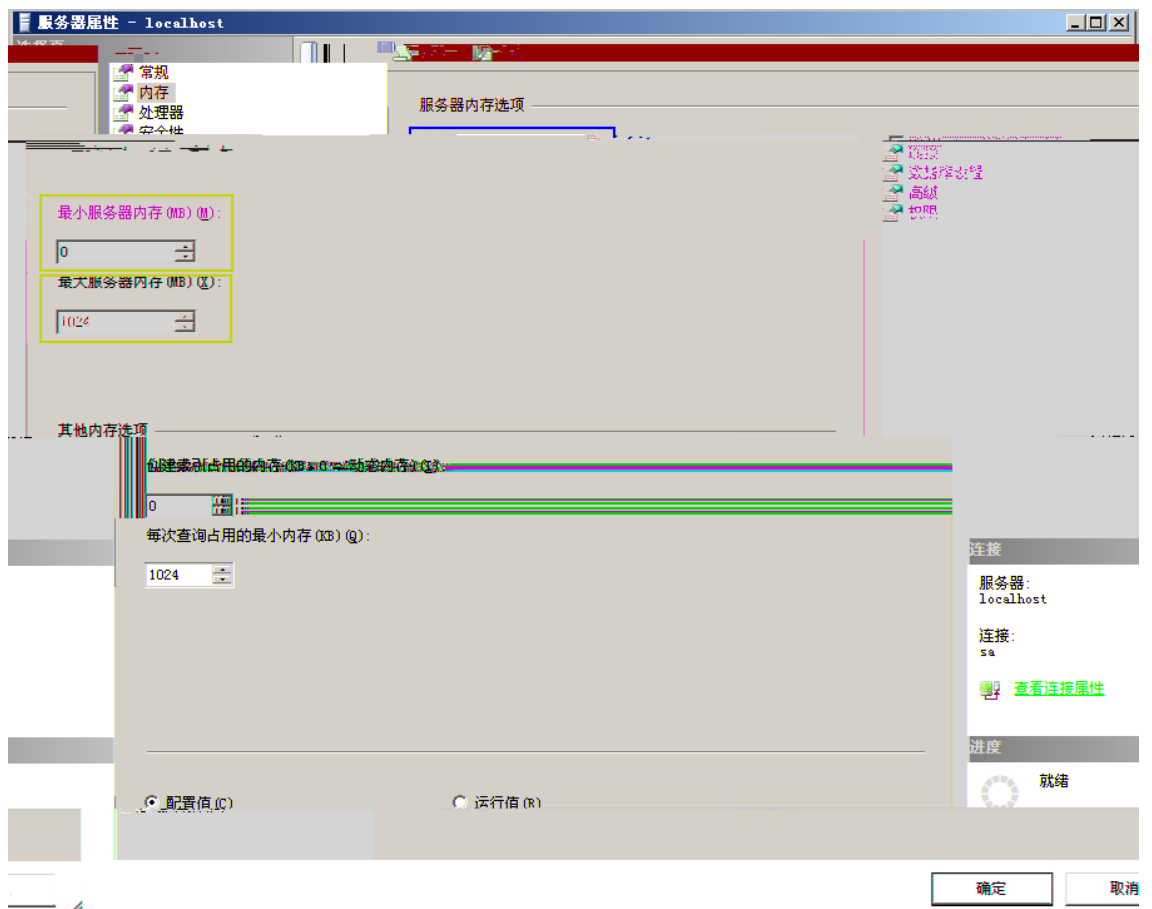


2. " "

3. " " " " " "

AWE

1GB



2G

RGAC

RGAC

RG-SAM

RGAC

.doc

3.4

"

"

windows

1

Guest

Guest

Guest

Guest

2

Duplicate User

3

Administrators

5

Everyone

6

20

20

7

3

TCurrentVersionWinlogonDont-

REG_SZ

1

1

2

3

4

5

42

6

1. sp . , sp .
sp , . sp
<http://www.microsoft.com/downloads/Popular.aspx?displaylang=zh-cn> ,
2. windows . , sp , 1
.
windows windows update ,
windows update ,
3.
 - a) IIS . IIS .
IIS: / / windows , Internet
(IIS) , ,
 - b) telnet . Telnet ,
, telnet ,
 - c) messenger . b), , ,

SQL SERVER

1. SQL SERVER . SP4,
[:http://www.microsoft.com/downloads/Popular.aspx?displaylang=zh-cn](http://www.microsoft.com/downloads/Popular.aspx?displaylang=zh-cn)
2. . sa , sa
3. . .
4. , , IP , IP

RG-SAM

1. RG-SAM , .
RG-SAM .
2. RG-SAM
3. ACL
4. RG-SAM IP (,) , RG-SAM
, IP , IP .
5. SAM " " SAM

UDP

— Web83 Tm()TJET EMC /133>> BDC BT/F2 10

TCP

P

P

SQL \MSSQL\Binn\sqlservr.exe SQL Server 2000
 SQL \MSSQL.1\MSSQL\Binn\sqlservr.exe (SQL Server 2005)
 SQL \MSSQL.1\MSSQL\Binn\sqlservr.exe (SQL Server 2008)

SAM \RGSAMService.exe
 SAM \RGNSMng.exe
 SAM \RG-Service-Mon.exe

1 \jboss\server\default\deploy\jms uil2-service.xml " BindAddress
 NTD SMP IP

```

<mbean code="org.jboss.mq.il.uil2.UILServerILService"
  name="jboss.mq:service=InvocationLayer,type=UIL2">

  <!-- The server chain -->
  <depends optional-attribute-name="Invoker">jboss.mq:service=Invoker</depends>
  <!-- JNDI binding -->
  <!-- JNDI binding for XA -->
  <!-- The bind address -->
  <!-- The bind port -->
  <!-- The ping period in millis -->
  <!-- Whether tcp/ip does not wait for
  <!-- Used to disconnect the client on
  <!-- Ensure this is greater than the p
  <!-- Used to disconnect the client on
  <!-- Ensure this is greater than the p
  <!-- The size of the buffer (in bytes)
  <!-- The buffer is flushed after each
  <!-- Large messages may block the ping
  <!-- A pong is simulated after each ch
  <!-- It must be larger than the buffer
  </mbean>
  
```

指定"BindAddress"属性为能与NTD
正常通信的网卡ip

2 SAM RGSAM.bat -Djava.rmi.server.hostname= IP

1) RGSAM.bat

```
RGSA.M.bat - 记事本
文件(F) 编辑(E) 格式(O) 查看(V) 帮助(H)
@echo off
:install
:uninstall
:usage
:lackParam
echo 缺少参数
:eof

RG-SAM %2\jdr\jrc\bin\ccr\usr\jfor_dtr -Djacc.crcss_path=%2\jdr\jrb\jteeIs.jar;%2\jboss\jso
:RG-SAM
:uninstall
net stop RG-SAM
net stop RG-Service-Monitor
%2\RGServiceMon.exe -u
goto eof
:usage
echo RGSA.M.bat文件
:lackParam
echo 缺少参数
:eof
```

```
-start org.jboss.Main params --host =能通信的IP -stop org.jboss.Main -method systemExit
```

```
    -start org.jboss.Main --host=192.168.1.100 --port=8080
```

```
    -start org.jboss.Main --host=192.168.1.100 --port=8080
```

请留意在配置时: