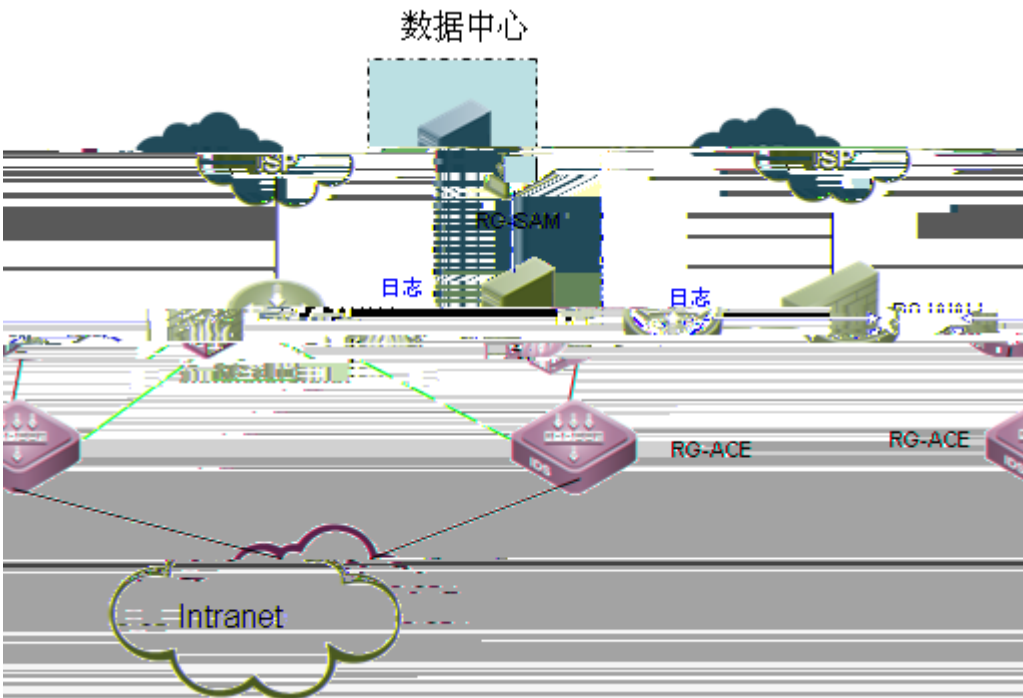


		RG-eLog	
RG-eLog		2
RG-eLog		3
RG-WALL		3
2.1		4
2.2		4
		4
		4
		5
2.6		5
2.7	web	5
		5
2.9		11
RG-ACE		11
3.1		11
3.2		11
3.3		12
		12
3.5	Console	13
		14
RG-NPE		17
rlog server		17
rlog mtu		17
rlog port		18
rlog export-rate		

RG-eLog

RG-eLog , RG-eLog RG-SAM , RG-NPE, RG-ACE,
RG-WALL RG-eLog



RG-WALL

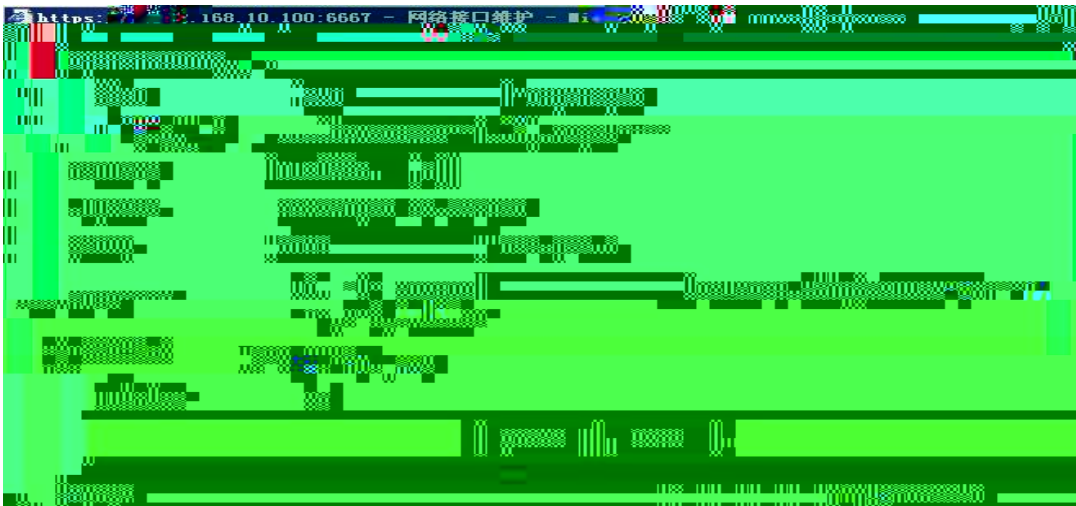
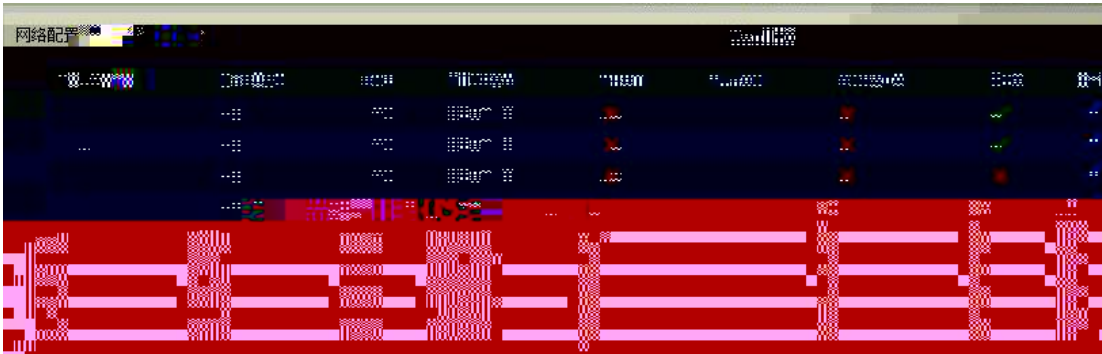
RG-WALL1600

7 console

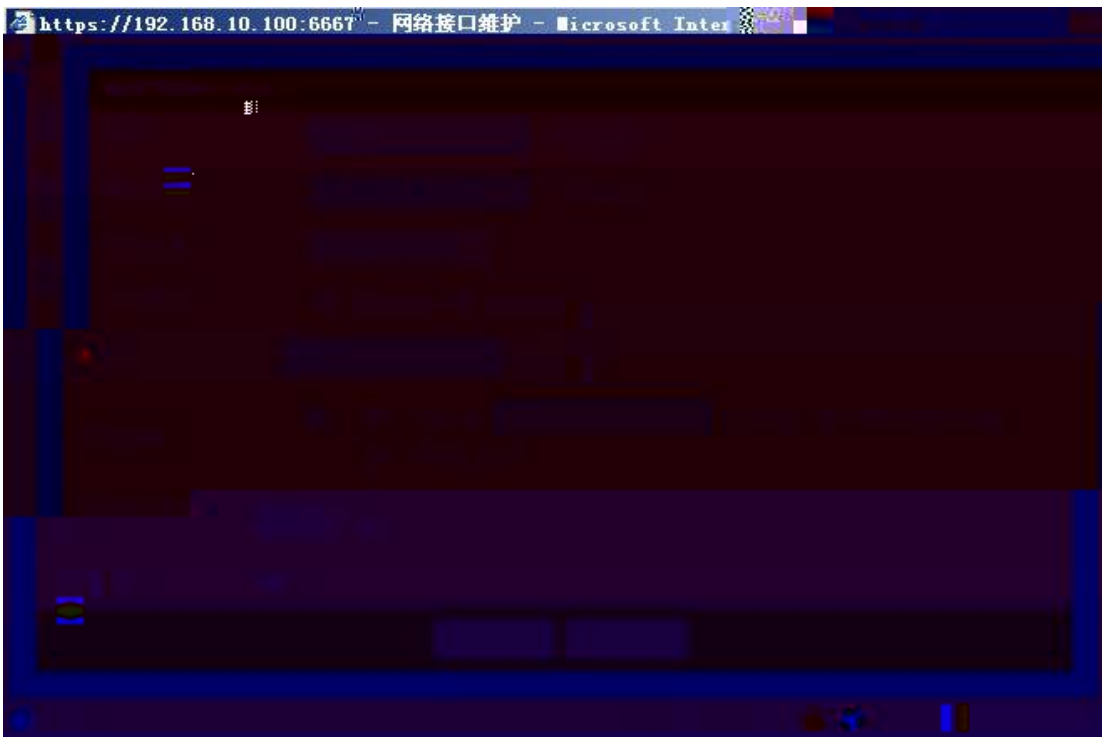
2

2.6

2.7 web



2-ge1



3-ge2

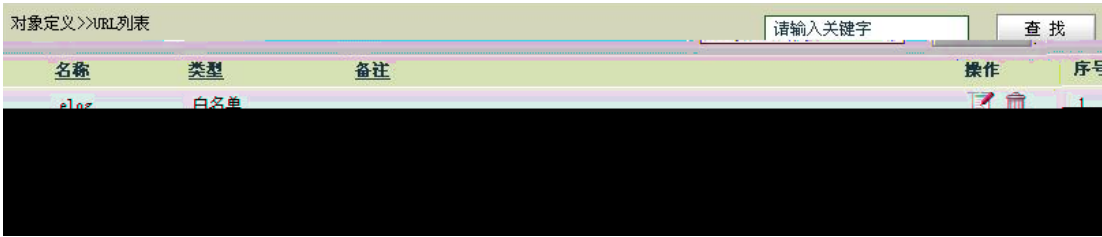
5 IP



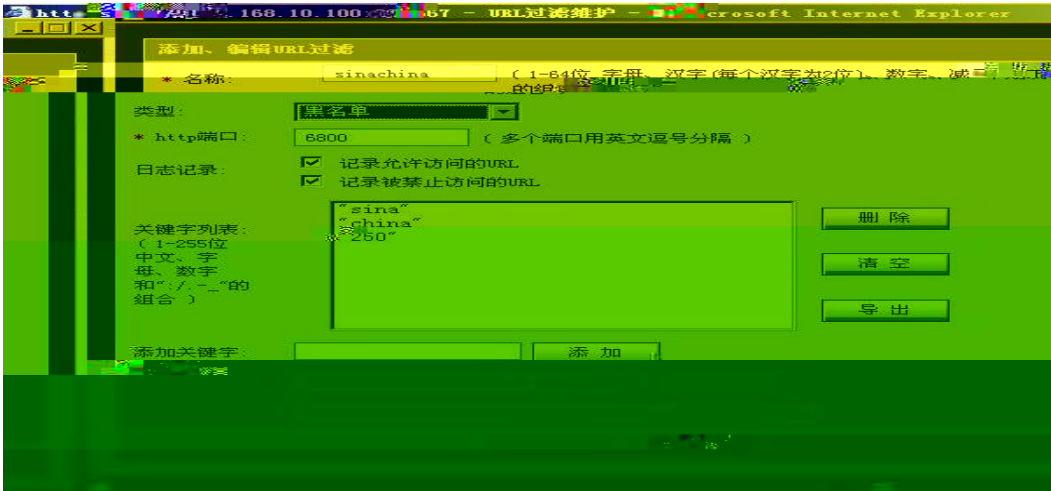
6-ge2 IP

6

8 URL



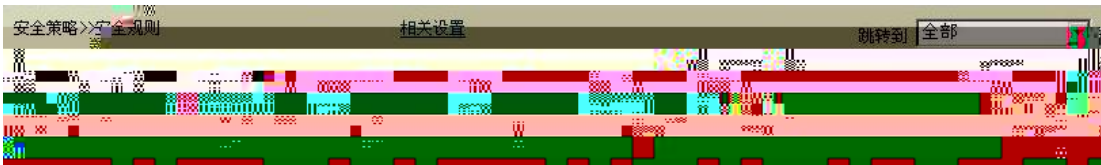
11-URL



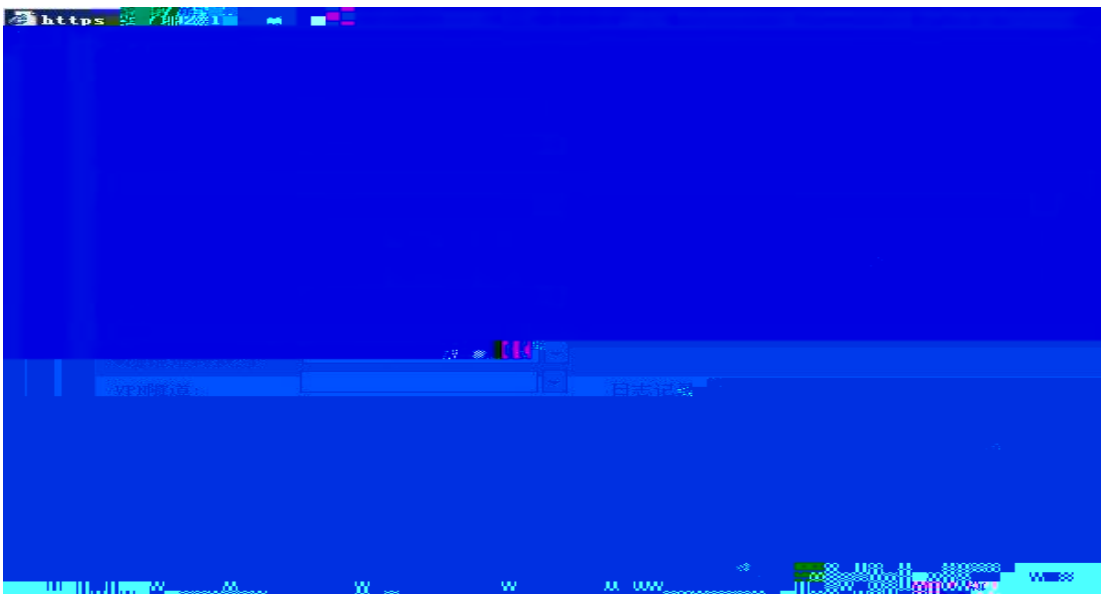
12-sinachinaURL

9

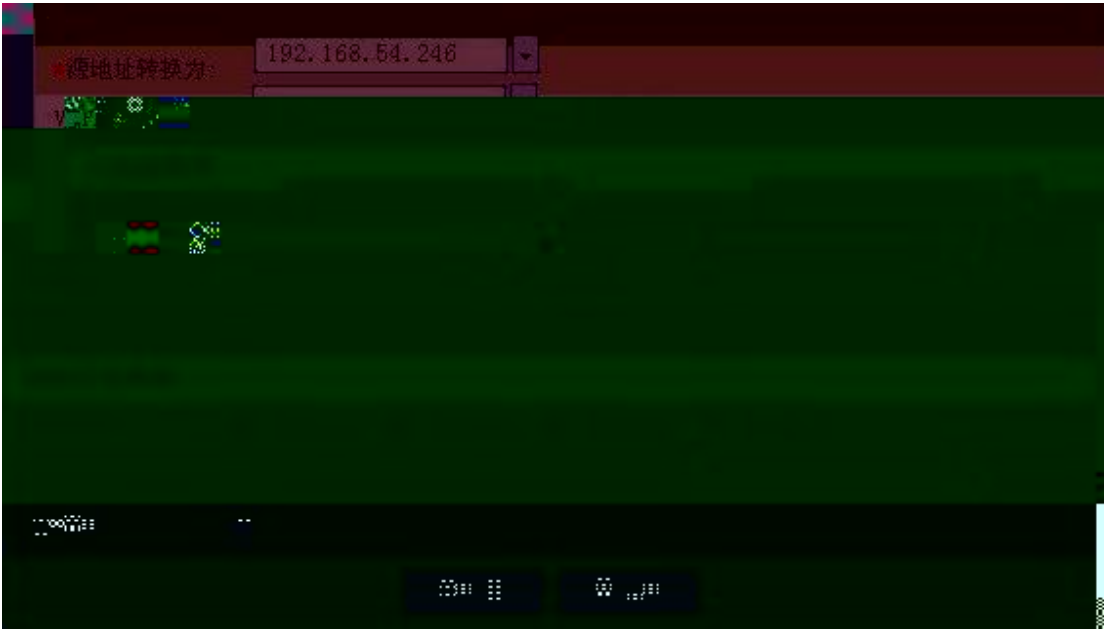
NAT



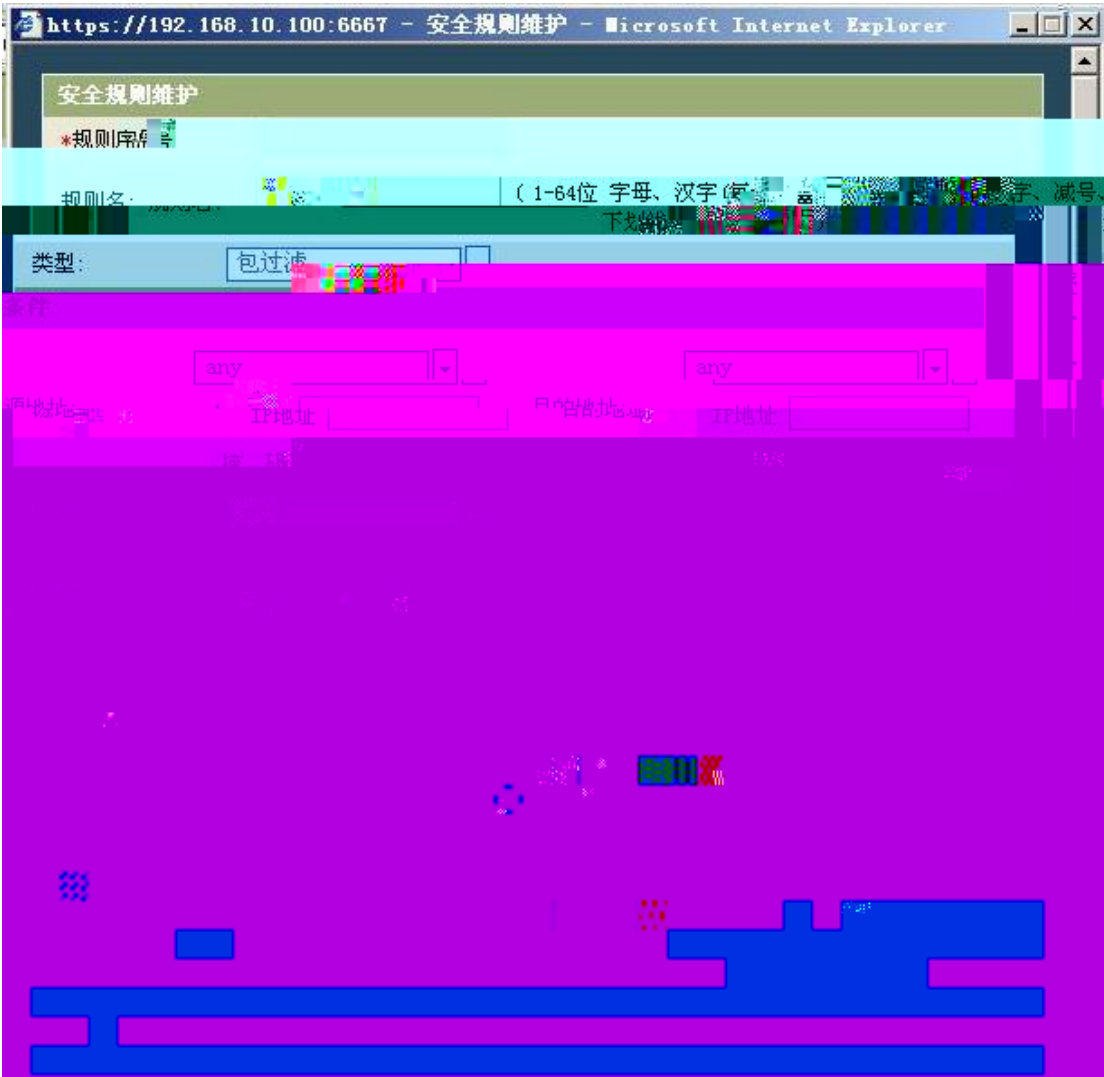
12-



13-p1 1



14-p1 2



15-p2

3.5 Console

```
ACE      IP
         IP
         "      "      "      "
         115200
         8
         1
```

6 DNS secondary []: // DNS

```
Management server ip address [xxx.xxx.xxx.xxx]:
                                                $ "
```

Management server ip address : 192.168.54.23

RG-ACE # net addr show

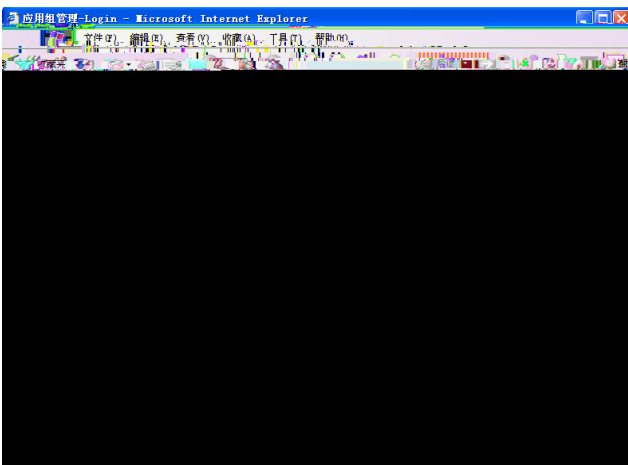
=====
Gateway: 192.168.54.1

Address	Netmask	Status	Interface	IP Address
192.168.54.1	255.255.255.0	UP	Ethernet0/0	192.168.54.1
192.168.54.2	255.255.255.0	UP	Ethernet0/0	192.168.54.2

RG-ACE # sys mgt show

Management server ip address : 192.168.54.23

- 1 JRE
jre-6u1-windows-i586-p.exe
 - 2 ACE
setup_v3.1.20_ruijie_200808221300.exe
 - 3 ACE
- IE IP PC
- admin
admin



- 4 ACE

IP

ACE

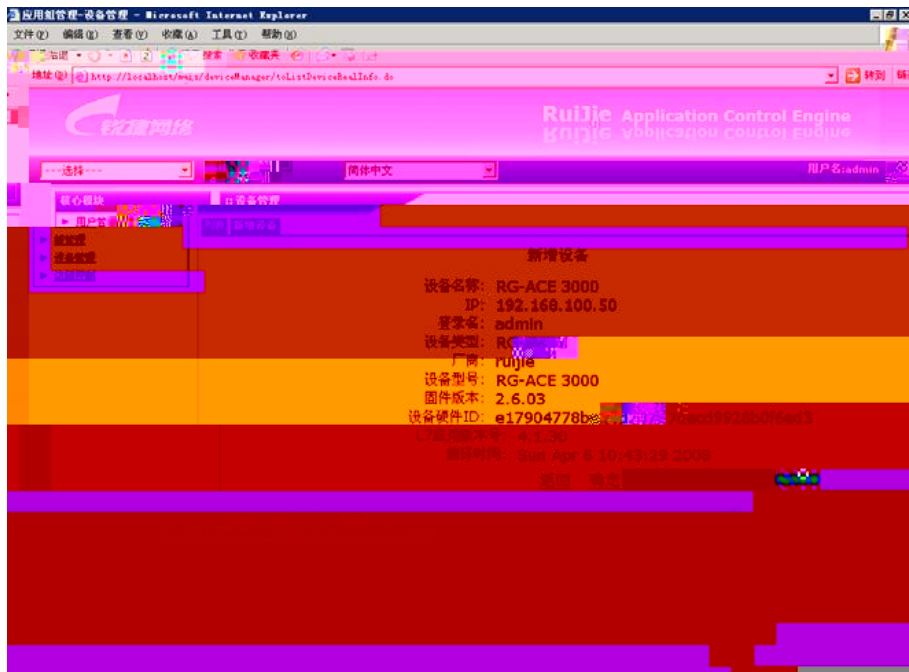
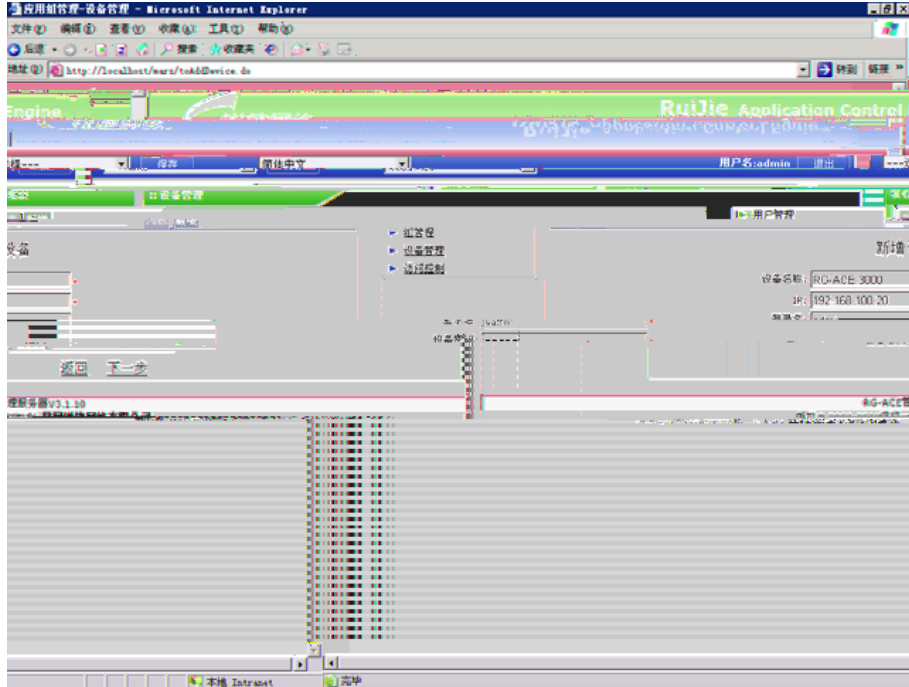
RG-ACE 3000

ACE

IP

admin

admin



5

7

7

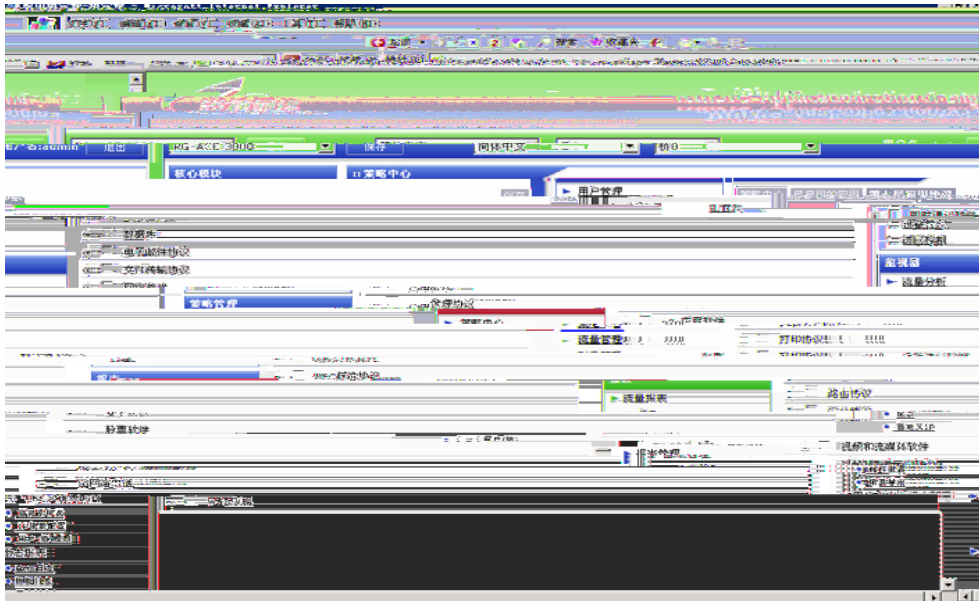
>

>

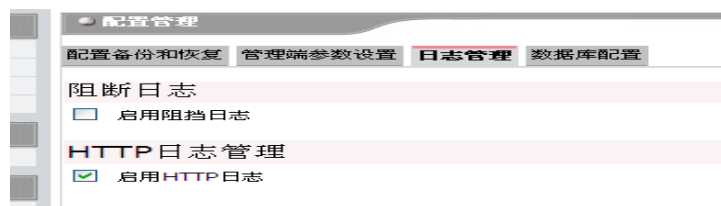
7

7

“ ”



6



RG-NPE

NPE RLOG

rlog server

rlog mtu

rlog port

rlog export-rate

rlog test

rlog server

VRF

rlog server *server-ip* [**vrf** *vrf-name*]

no rlog server

server-ip

vrf-name VRF

udp

Ruijie(config)# **rlog server** 10.1.1.1

ip session log-on

rlog mtu

rlog mtu *number*

no rlog mtu

1000

rlog server is enable

mtu 1200 port 1