



SATA  
POWER

||

||

100-220V AC

copyright © 2021



<http://www.ruijie.com.cn/>

<http://webchat.ruijie.com.cn>

<http://www.ruijie.com.cn/service.aspx>

7× 24

4008-111-000

---

---

[4008111000@ruijie.com.cn](mailto:4008111000@ruijie.com.cn)

# 1

RG-S2600G-I

QOS

RG-S2600G-I

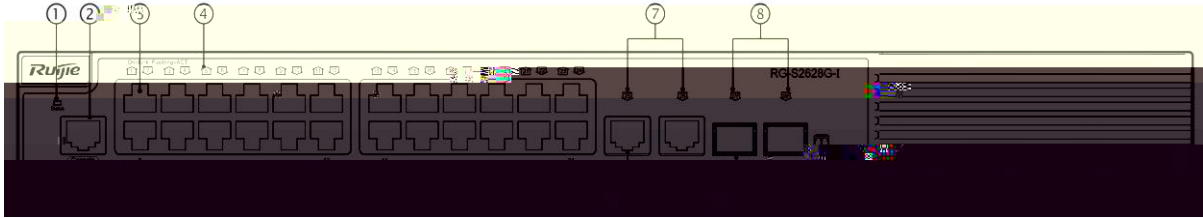
	10/100Base-T	10/100/1000Base-T	1000Base-X SFP	Console
RG-S2628G-I	24	2	2	1
RG-S2652G-I	48	2	2	1

## 1.1 RG-S2628G-I

	RG-S2628G-I
CPU	500M
BOOTROM	8M
Flash Memory	128M
SDRAM	DDRII 128MB
	Mini-GBIC-SX Mini-GBIC-LX Mini-GBIC-LH40 Mini-GBIC-ZX50 Mini-GBIC-ZX80 Mini-GBIC-ZX100  1000Base-T  Mini-GBIC-GT  SFP  GE-SFP-STACK1.6M <hr/> <hr/>
SFP	1000Base-X 2.5G
	AC

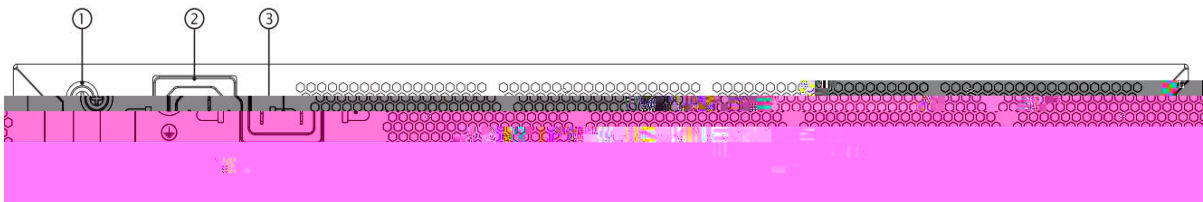
	<p>100-240V~            90-264V~            50/60Hz            0.5A</p> <p>HVDC</p> <p>192-290VDC            0.15A-0.07A</p>
	3.5mA
	13W
	0°C ~ 50°C
	-40°C ~ 70°C
	10% ~ 90% RH
	5% ~ 90% RH
EMC	GB9254-2008
	GB4943-2011

1-2 RG-S2628G-I



1	5	10/100/1000Base-T
2 Console	6	1000Base-X SFP /2.5G
3 10/100Base-T	7	10/100/1000Base-T
4 10/100Base-T	8	1000Base-X SFP

1-3 RG-S2628G-I



1	3
2	

RG-S2628G-I

AC

100-240V~

90-264V~

50/60Hz

0.5A

10A

HVDC

192-290VDC

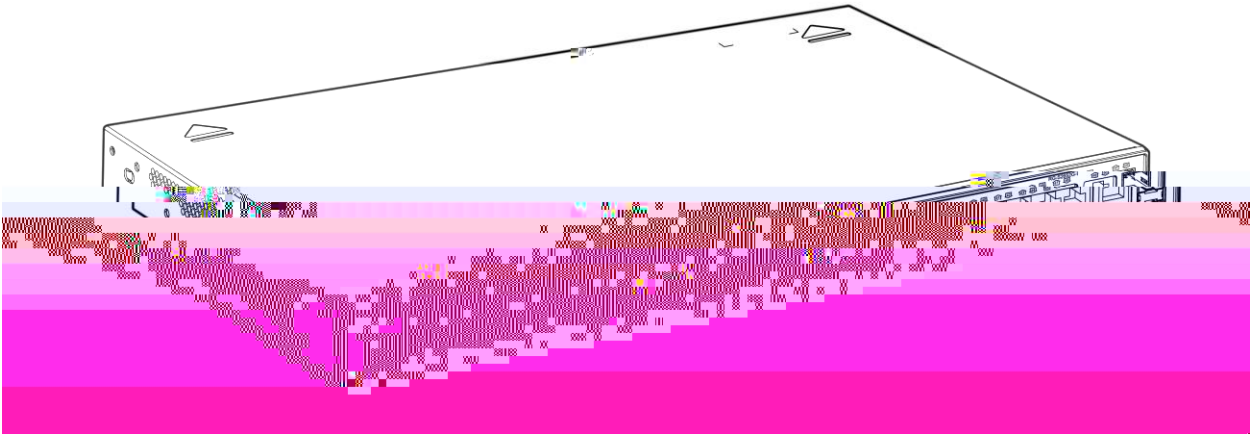
0.15A-0.07A

	Status		
			5.2
RJ-45	1~26		Link
			Link up
SFP	27F 28F		Link
			Link Up

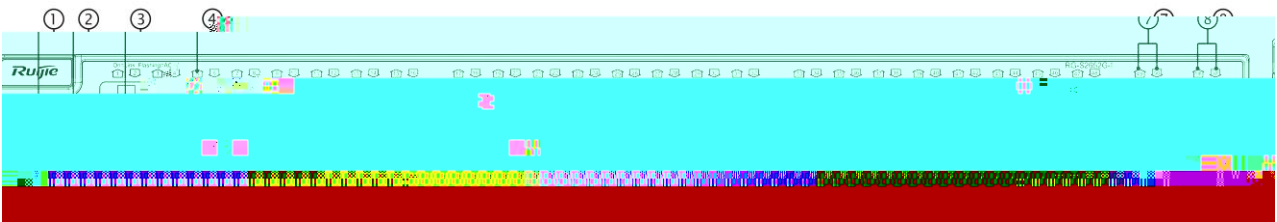
## 1.2 RG-S2652G-I

	RG-S2652G-I	
--	-------------	--



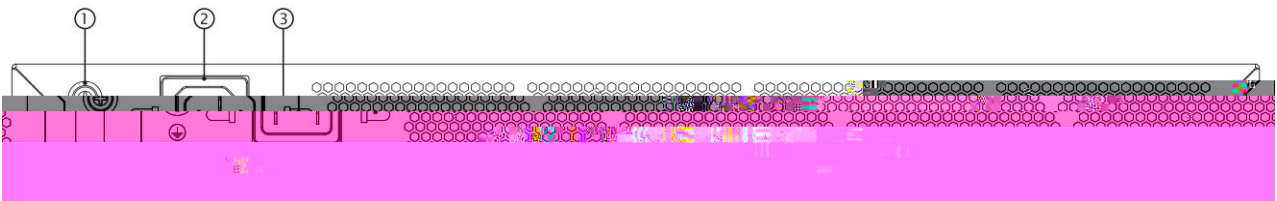


1-5 RG-S2652G-I



1	5	10/100/1000Base-T
2	6	1000Base-X SFP /2.5G
3	7	10/100/1000Base-T
4	8	1000Base-X SFP

1-6 RG-S2652G-I



AC

100-240V~

90-264V~

50/60Hz

0.6A

10A

HVDC

192-290VDC

0.2A-0.12A

RG-S2652G-I

10cm

3



**2**



## 2.2.2

RG-S2600G-I

0°C-50°C	10%-90%

---

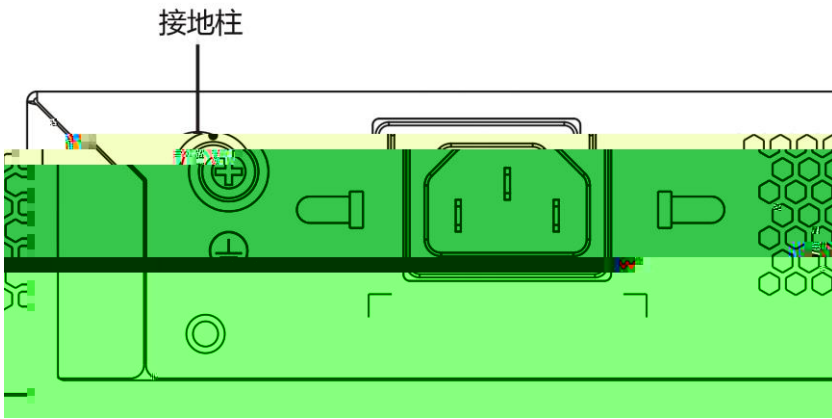
1.5m

0.4m

---

## 2.2.3





### 2.2.9

---

---

### 2.2.10 EMI

## 2.3

## 2.4


## 3

---

---

### 3.1

### 3.2

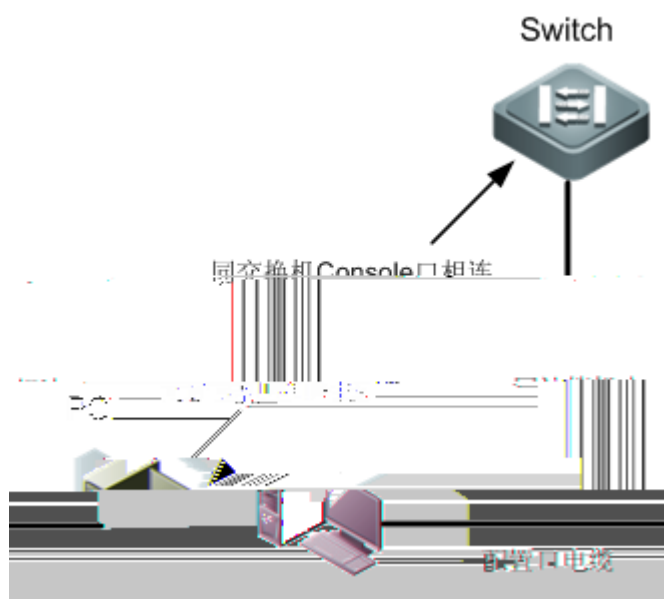
10



# 4

## 4.1

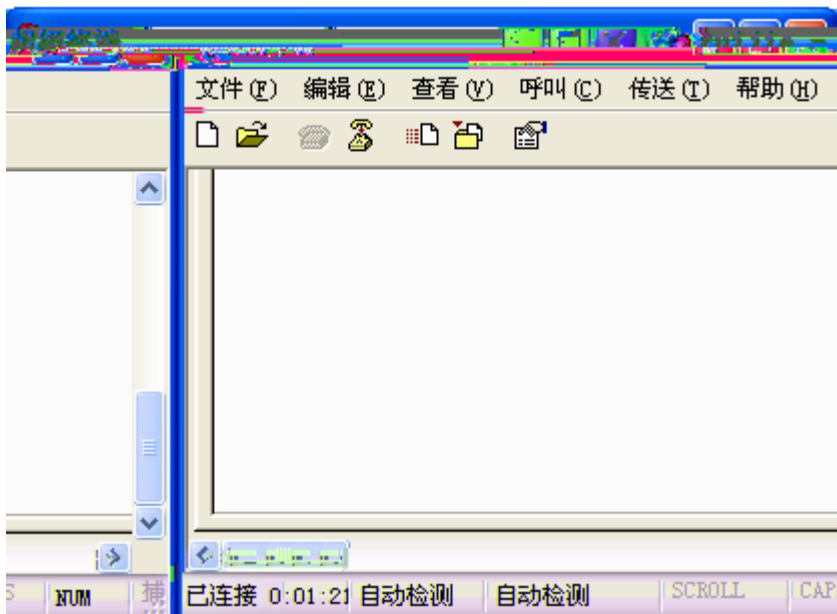
PC Console 4-1  
4-1



DB-9 PC  
RJ-45 Console





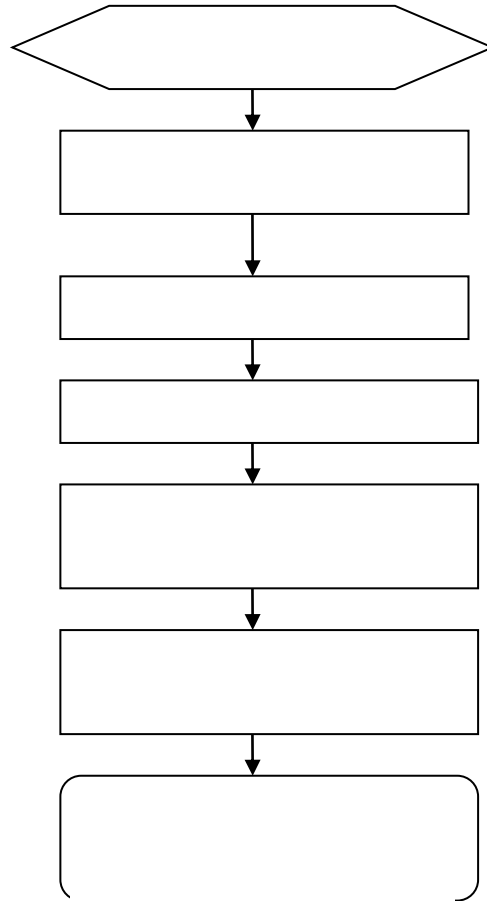


## 4.2

PC

## 5

### 5.1



### 5.2

	-	
status		
Status		
RJ45	100	



# A

## 1000BASE-T/100BASE-TX/10BASE-T

1000BASE-T/100BASE-TX/10BASE-T

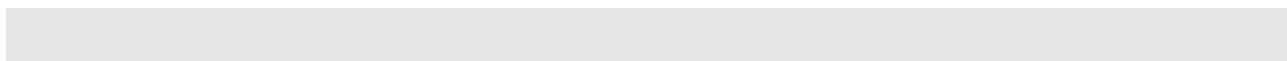
MDI/MDIX Crossover

1000BASE-T	IEEE 802.3ab		100-ohm 5	5	UTP	STP
	STP	100				

1000BASE-T	4		4		1000BASE-T	
------------	---	--	---	--	------------	--

A-1

A-1 1000BASE-T



Switch	Switch	Switch	Switch
1 TP0 +	1 TP0 +	1 TP0 +	1 TP0 +
2 TP0 -	2 TP0 -	2 TP0 -	2 TP0 -
3 TP1 +	3 TP1 +	3 TP1 +	3 TP1 +
6 TP1 -	6 TP1 -	6 TP1 -	6 TP1 -
4 TP2 +	4 TP2 +	4 TP2 +	4 TP2 +
5 TP2 -	5 TP2 -	5 TP2 -	5 TP2 -
7 TP3 +	7 TP3 +	7 TP3 +	7 TP3 +
8 TP3 -	8 TP3 -	8 TP3 -	8 TP3 -

100BASE-TX/10BASE-T

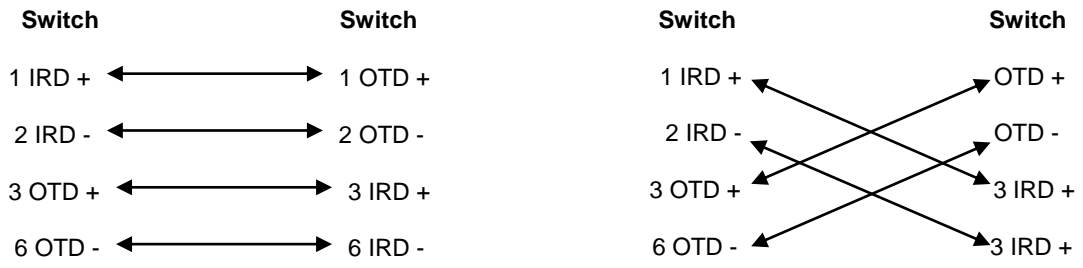
10Mbps

100-ohm 3,4,5

100Mbps

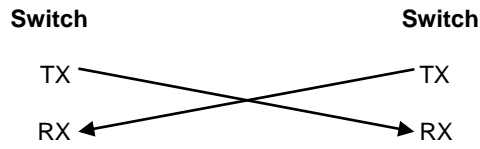
100-ohm 5

100



A-4:

A 4



## **B Mini-GBIC**

**C**

3.7km

3.7km

2km

5km

600mm