



I G\$J) 6' ' G\$J

V(%4

©2014



1

RG-S2600-S

QOS

„ RG-S2600-S

	10/100Base-T	10/100/1000Base-T	1000Base-X SFP	Console
RG-S2628G-S	24	2	2	1
RG-S2652G-S	48	2	2	1

1.1 RG-S2628G-S

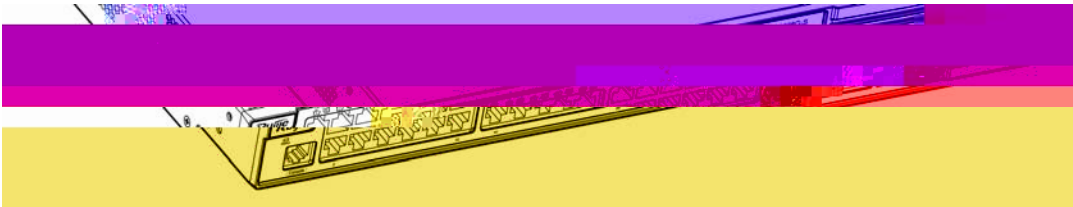
	RG-S2628G-S
	Mini-GBIC-SX Mini-GBIC-LX Mini-GBIC-LH40 Mini-GBIC-ZX50 Mini-GBIC-ZX80 Mini-GBIC-ZX100 1000Base-T Mini-GBIC-GT SFP GE-SFP-STACK1.6M <hr/> [f Ö ø Ü ¶ Ÿ ; " W í n ~ È † 8 , î d
SFP	1000Base-X 2.5G
17W A	AC 100-240V~ 90-264V~ 50-60Hz 2A
	17W

	GB4943-2011
× × mm	440 × 200×44
kg	3.9 kg

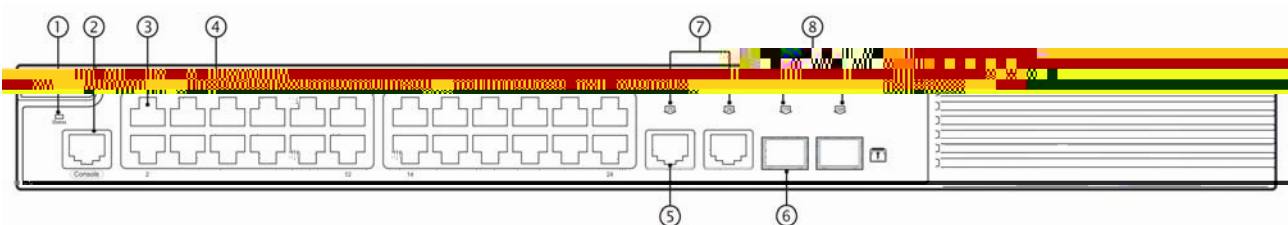
a RG-S2600G-S ,yì0o A %!6 }“c,B/ !6¶ŸV•NM-(\$ d}ã5Æã• ¶Ÿ ‘
sc\$ ðÜ--¶û î d

RG-S2628G-S 24 10/100Base-T 2 2 SFP 1
Console

1-1 RG-S2628G-S

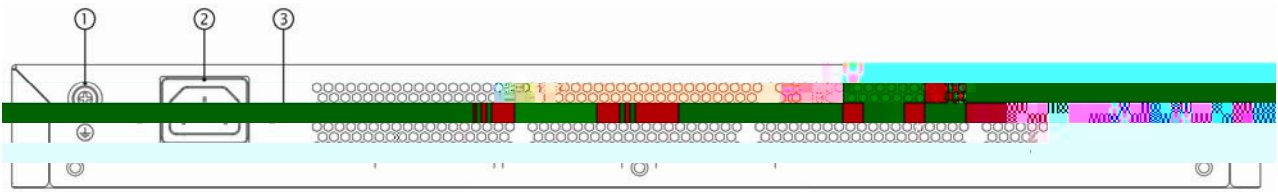


1-2 RG-S2628G-S



1	5	10/100/1000Base-T
2 Console	6	1000Base-X SFP /2.5G
3 10/100Base-T	7	10/100/1000Base-T
4 10/100Base-T	8	1000Base-X SFP

1-3 RG-S2628G-S



1

2

			Link Up

1.2 RG-S2652G-S

	RG-S2652G-S
	Mini-GBIC-SX Mini-GBIC-LX Mini-GBIC-LH40 Mini-GBIC-ZX50 Mini-GBIC-ZX80 Mini-GBIC-ZX100 1000Base-T Mini-GBIC-GT SFP GE-SFP-STACK1.6M <hr/> [f Ö ø Ü ¶ Ÿ ; " W í n ~ È † 8 , î d
SFP	1000Base-X 2.5G
	AC 100-240V~ 90-264V~ 50-60Hz 2A
	28W
	0°C ~ 50°C
	-40°C ~ 70°C
	10% ~ 90% RH
	5% ~ 90% RH
EMI	GB9254-2008
	GB4943-2011
× × mm	440 × 260×44
kg	4.2 kg

a RG-S2600G-S ,yì0o A %!6 }“c,B/ !6¶ŸV•NM→(\$ d}ã5Æã• ¶Ÿ ‘
sc\$ ðÜ-→¶û î d

1	3
2	

RG-S2652G-S

” AC
 100-240V~
 90-264V~
 50-60Hz
 2A
 10A

RG-S2652G-S

3 10cm

	Status		
			5.2
RJ-45	1~50		Link
			Link Up
SFP	51F 52F		Link
			Link Up

2

2.1

t¥Gs ä•••Nd½ È} m RG-S2600-S ,y!6 ••...g`‡à æÙĐd
»• æÙĐÉâ•fN ¶Ÿ{£ ¢Æãd

2.1.1

”
”
”
”

2.1.2

”
”
”

2.1.3

”
”
”
”
”
”
”

a âŸ³câþò (w ´¶ŸäoeYG(l Éó¹f És ~ä•••NX7c!a d½d

a g¹¶6j^~. ^:BcÇ(¶ŸÛÿ!a ¢d

2.1.4

”

”

”

2.1.5

RG-S2600-S

”

”

[a](#) M â } â 5 Æ ä • [â ¶ » ¬ - g Ê › Ç » G • Nd 5 RE * d

2.2

RG-S2600-S

2.2.1

RG-S2600-S

10cm

0°C-50°C	10%-90%
----------	---------

••]´, B1 c i g h\$ }••o¯• | P¨ h d o P 1.5m :g É o•••K P 0.4m
 %o h ô d

2.2.3

0.5µ m	/ m ³	3.5× 10 ⁶
5µ m	/ m ³	3× 10 ⁴



2.2.5

RG-S2600-S

a i0o - p(U %i0o½" c½\$ 7'ID N» i pò d

,Đ

2.2.7 EMI

”

”

”

”

2.3

2.4

RG-S2600-S ,yì0oâ Û]ng]n ‘ ‘•y•d

3.3 RG-S2600-S

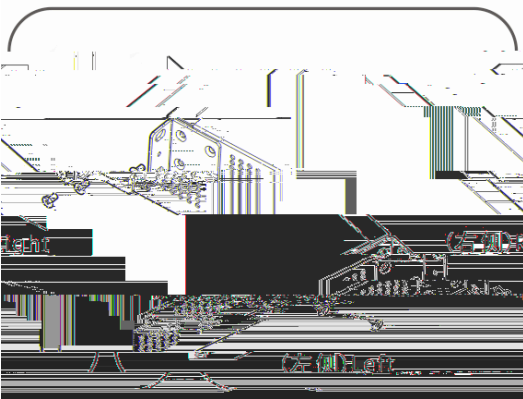
”
”
”
”
”
”

10

3.3.1 19

RG-S2600-S EIA 19

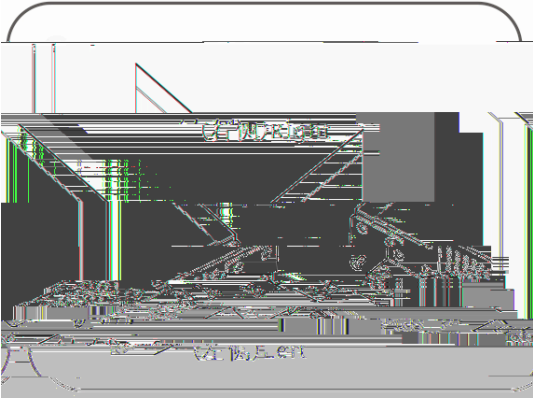
3-1



3.3.2

RG-S2600-S

3-2



3.3.3

19

”

4

”

3.4

a ĭ m¾îpò • ÈøGòG'ž(W »GU Đb•N ~d½äE*!6æÑ

”

”

”

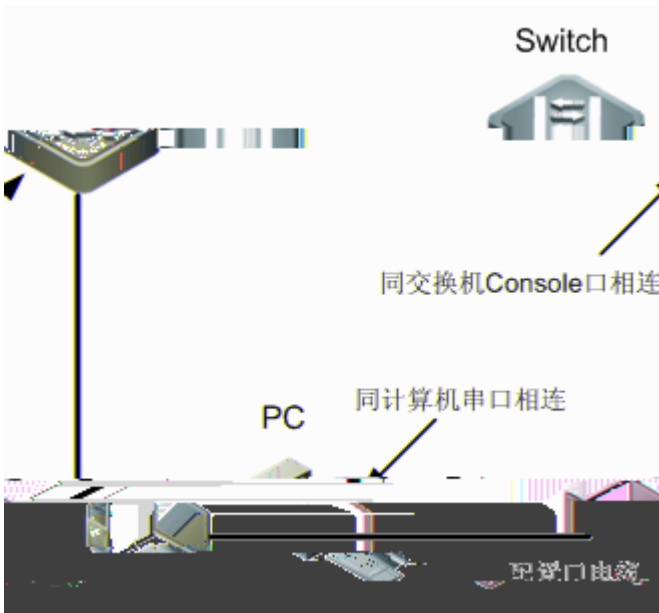
”

10

4

4.1

PC Console . 4-1
4-1



” DB-9 PC
” RJ-45 Console

” PC PC Windows3.1 Terminal Windows 95/98/NT/2000/XP
” 9600 8 1

1) - - - - 4-2

4-2



2)

4-3

4-3

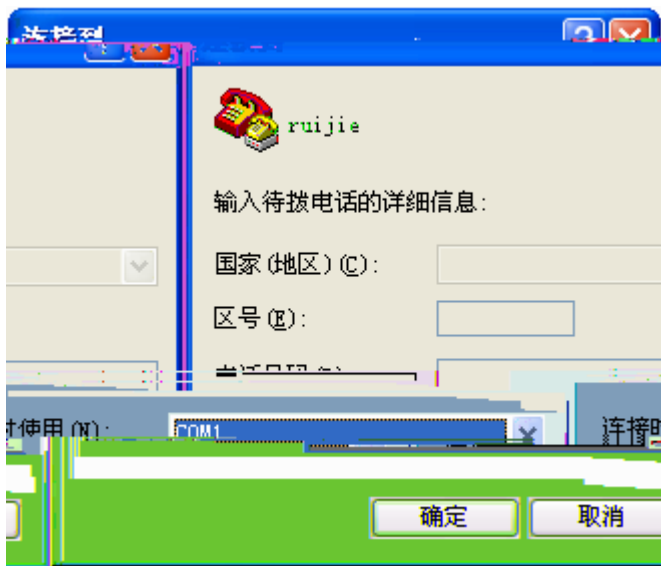


3)

< >

4-4

4-4



4)

< >

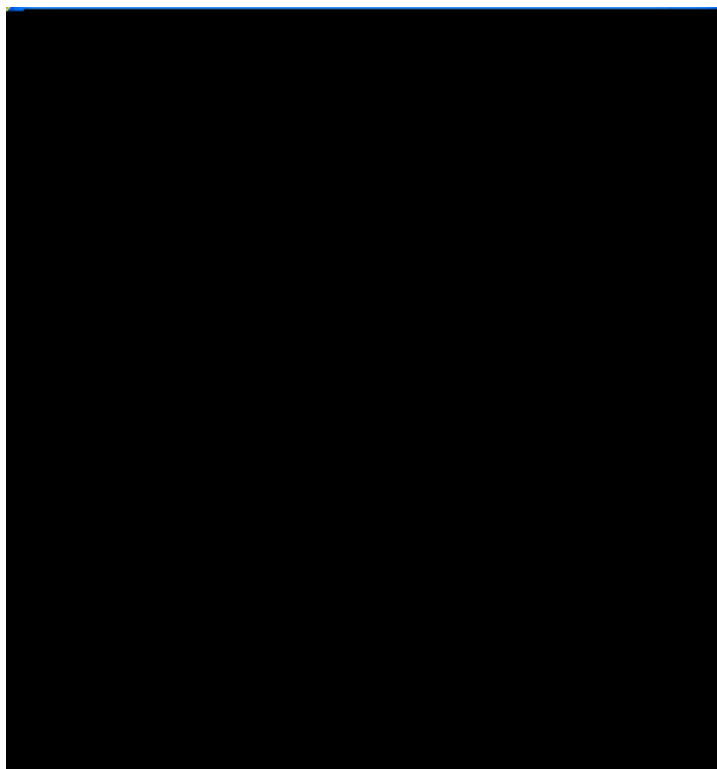
4-5

9600

8

1

4-5

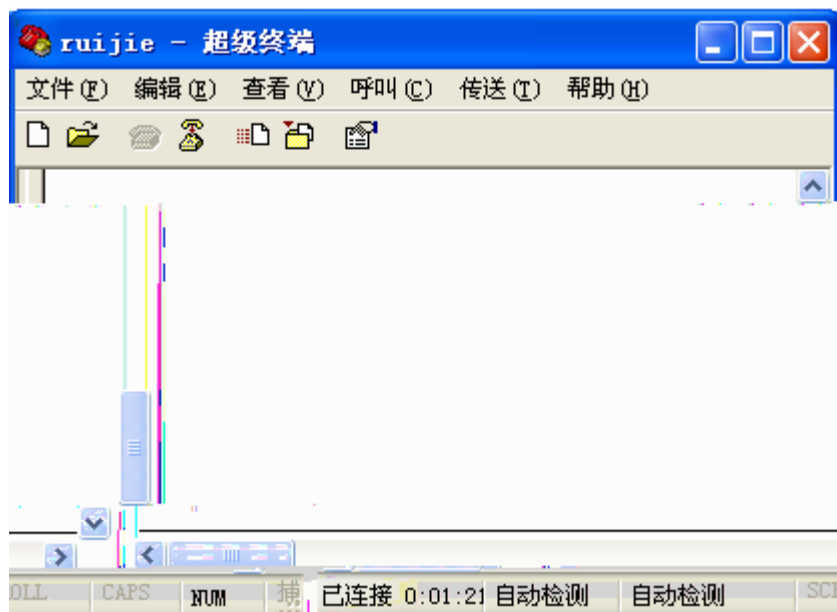


5)

< >

4-6

4-6



4.2

”

”

”

”

PC

”

”

RG-S2600S

RJ45	100	

A —

1000BASE-T/100BASE-TX/10BASE-T

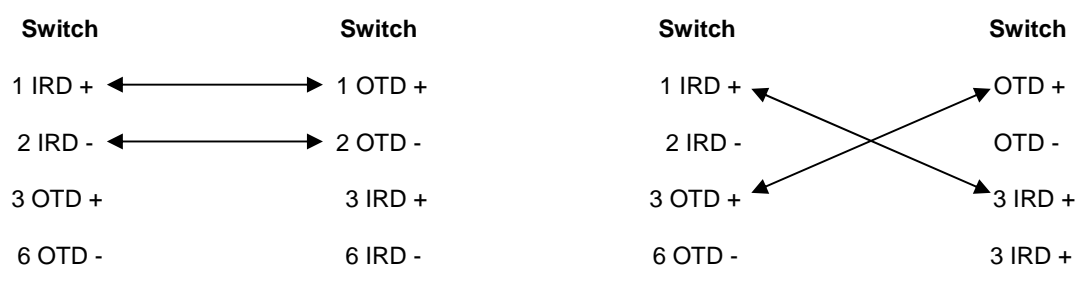
1000BASE-T/100BASE-TX/10BASE-T

MDI/MDIX Crossover

1000BASE-T	IEEE 802.3ab		100-ohm 5	5	UTP	STP
	STP	100				

1000BASE-T	4		4	1000BASE-T
A-1				

A-1 1000BASE-T



B — Mini-GBIC

SFP SFP Mini-GBIC SFP

Mini-GBIC SFP

Mini-GBIC(SFP)	(nm)	(m)	(MHz/km)	(dbm) MAX	(dbm) MAX	
FE-SFP-LX-MM1310	1310	62.5/125	N/A	2	-14	
FE-SFP-LH15-SM1310	1310	9/125	N/A	15	-8	
Mini-GBIC-SX	850	62.5	160	220	-4	-17
		62.5	200	275		
		50.0	400	500		
		50.0	500	550		
Mini-GBIC-LX	1310	62.5	500	550	-3	-20
		50.0	400	550		
		50.0	500	550		
		9/10	N/A	10		
Mini-GBIC-LH40	1310	9/125	N/A	40		