



**RG-S2300G-P v1.0**

**Firmware: Build 1.01.13**



.....	5
.....	7
1.1 .....	7
1.2 RG-S2300G-P .....	7
1.3 RG-S2300G-P .....	8
1.3.1 RG-S2312G-P .....	8
1.3.2 RG-S2320G-P .....	9
1.4 RG-S2300G-P .....	10
.....	12
2.1 .....	12
2.1.1 .....	12
2.1.2 .....	12
2.1.3 .....	12
2.1.4 .....	12

4.2.1	.....	23
4.2.2	.....	23
	.....	<b>24</b>
5.1	.....	24
5.2	.....	24
<b>A</b>	.....	<b>26</b>
<b>1000BASE-T/100BASE-TX/10BASE-T</b>	.....	26
	.....	26
<b>B</b>	.....	<b>28</b>
<b>MINI-GBIC</b>	.....	
<b>MINI-GBIC SFP</b>	.....	

V C B T 1 0 0 1 3 6 0 g [ < 0 8 7 D > 7 c h e







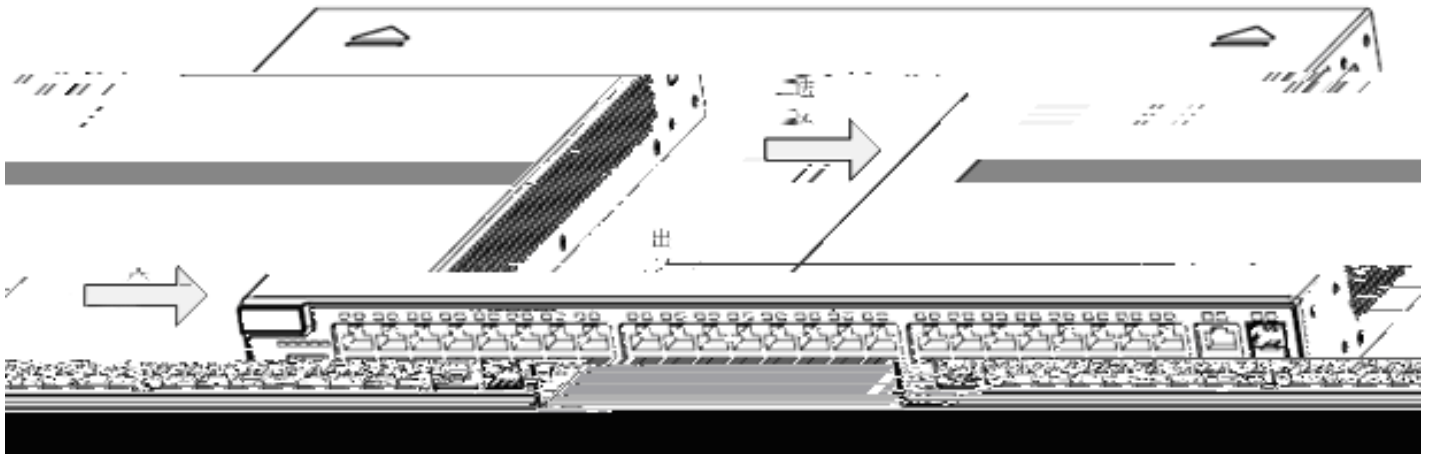


3.5A  
10A

### 1.3.2.5

RG-S2320G-P  
10cm

1-7



## 1.4

1-4 RG-S2300G-P V1.0

Ä



## 2.1

RG-S2300G-P V1.0

---

**注意:**

---

### 2.1.1

### 2.1.2

### 2.1.3

---

**警告:**

- 1.
- 2.

---

## 2.1.4

- (1)
- (2)
- (3)

## 2.1.5

RG-S2300G-P V1.0

---

**警告:**

---

## 2.2

RG-S2300G-P V1.0

### 2.2.1

RG-S2300G-P V1.0

10cm

### 2.2.2

2-1 RG-S2300G-P V1.0

%

--	--

0℃-50℃

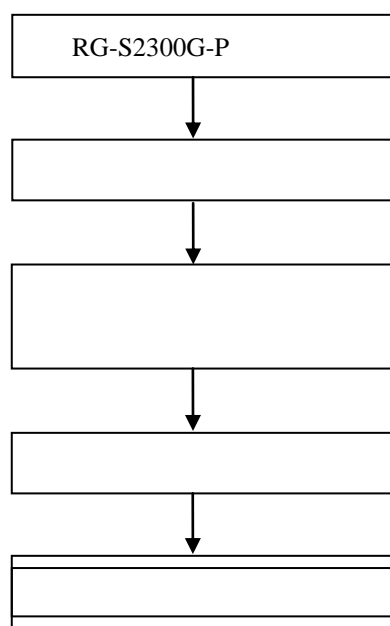
5%-95%

## 2.3



注意:

### 3.1



### 3.2

### 3.3

#### 3.3.1

:

10

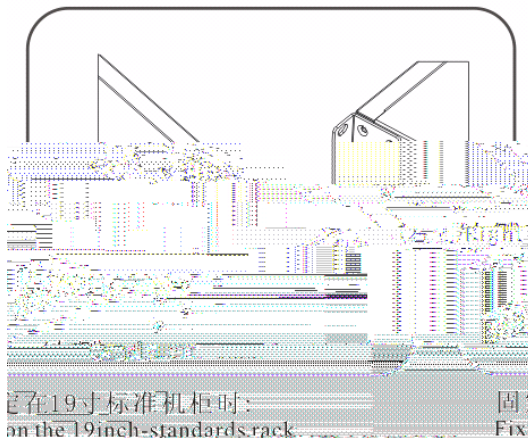
#### 3.3.2

19

RG-S2300G-P

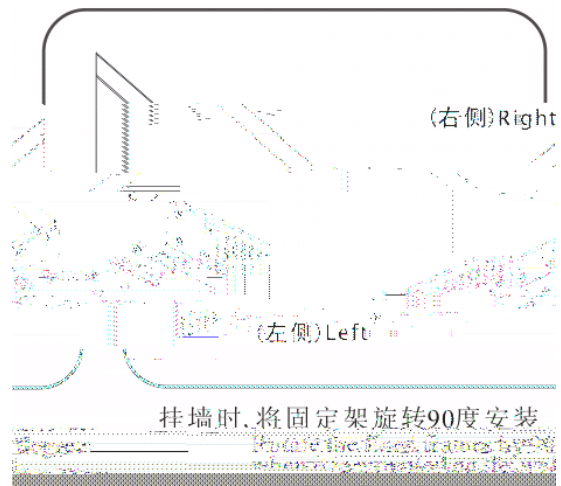
EIA

19



#### 3.3.3

RG-S2300G-P



### 3.3.4

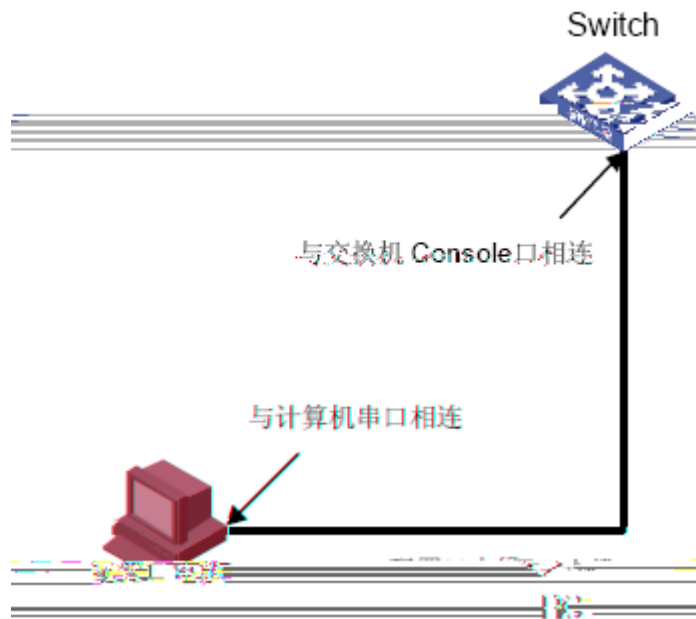
19

4

## 4.1

### 4.1.1

PC Console . 4-1 :



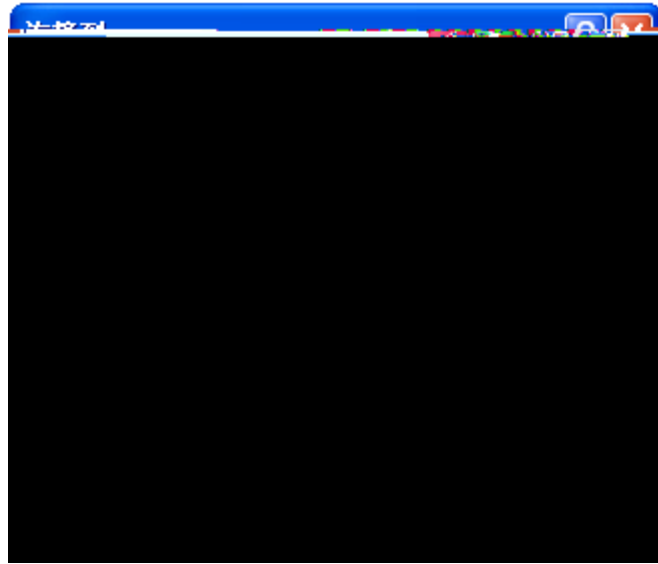
4-1

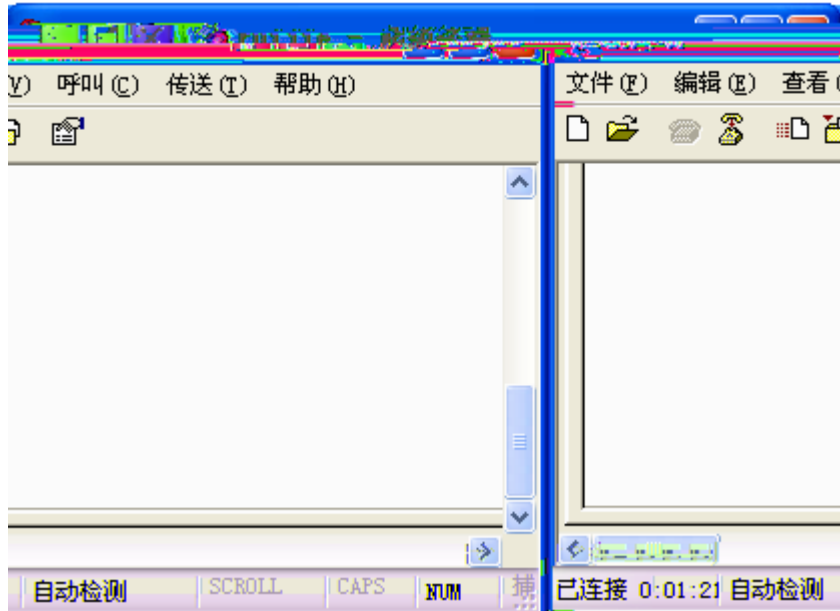
### 4.1.2

DB-9 PC  
RJ-45 Console

### 4.1.3







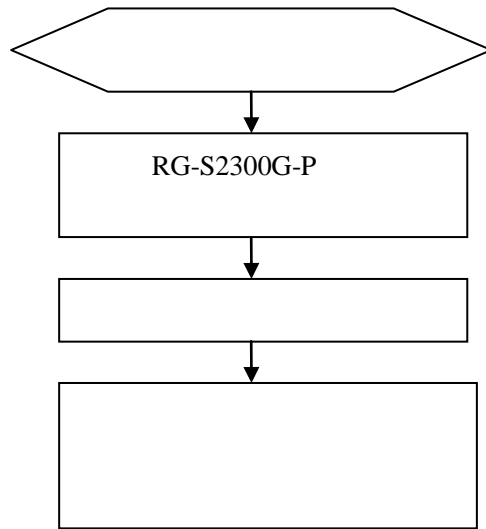
## 4.2

### 4.2.1

PC

### 4.2.2

## 5.1



## 5.2

<b>status</b>		

<b>RJ45</b>	100	

# A

## 1000BASE-T/100BASE-TX/10BASE-T

1000BASE-T/100BASE-TX/10BASE-T				MDI/MDIX	
Crossover	1000BASE-T	IEEE 802.3ab	100-ohm 5	5	UTP
STP		STP	1000BASE-T	4	
4	1000BASE-T		A-1		

A-1 1000BASE-

