

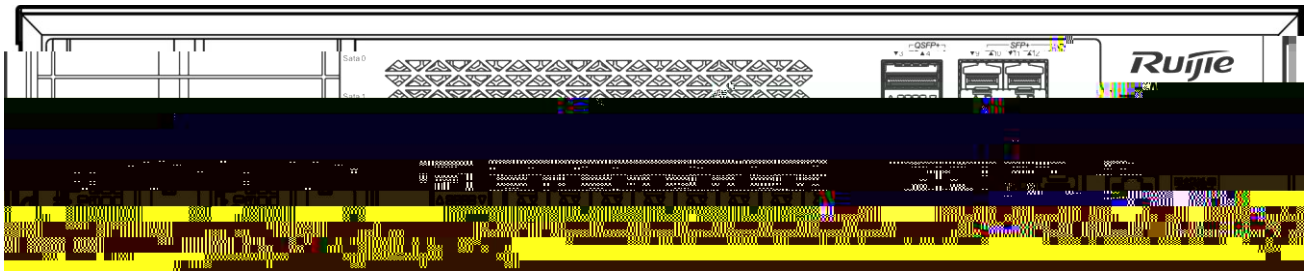
copyright © 2024



RG-WS7880

WLAN

1-1



| | |
|-------|------|
| | |
| POWER | |
| SYS | |
| FAN | |
| | LINK |
| | link |

| | |
|-----|--------------------|
| | |
| × × | 560mm×440mm×88.1mm |
| | 2U |
| | 15kg |

| | |
|--|--|
| | |
| | <p>8 1G</p> <p style="text-align: center;">10/100/1000Base-T</p> <p style="text-align: center;">8 MGMT</p> <p>12 10G SFP+</p> <p>4 40G QSFP+</p> <p style="text-align: center;">1 QSFP+ 4 10G 13~16</p> <p style="text-align: center;">2 QSFP+ 4 10G 17~20</p> |
| | <p>1 RJ45 Console</p> <p>1 USB</p> |
| | 1 |

-
-
-
-
-
-
-
-
-
-

UPS

10

/

18

24



| | | | |
|--------|-------|---------|---------|
| | | | |
| 15 ~30 | 0 ~45 | 40%~65% | 10%~90% |



1.5m

0.4m



48

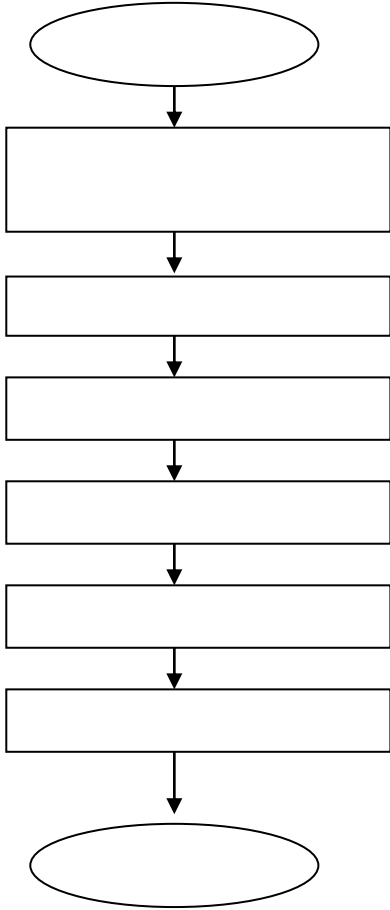
15



5

| | | | | |
|----|-----|---|---|---|
| μm | 0.5 | 1 | 3 | 5 |
|----|-----|---|---|---|

RG-WS7880



RG-WS7880

RG-WS7880

RG-WS7880

RG-WS7880

■

■

RG-WS7880

10cm

RG-WS7880

DB-9

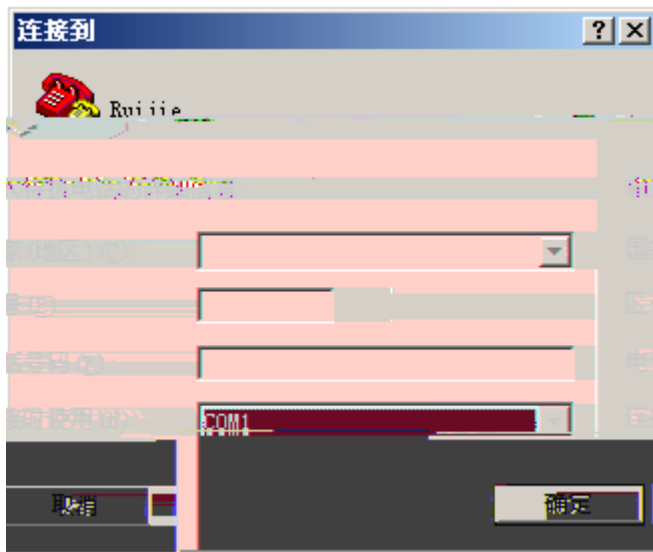
RG-WS7880

-
-
-
-

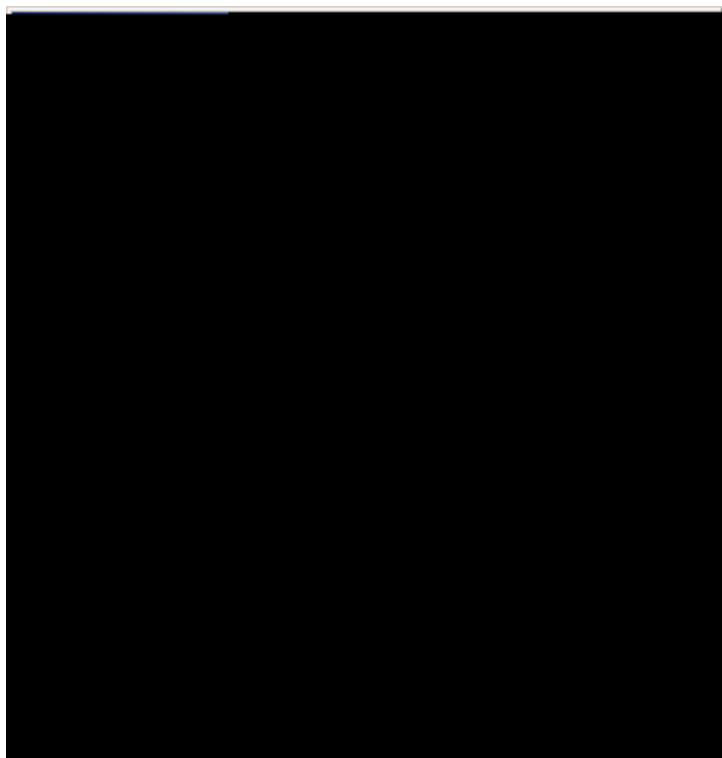
AC
■88sole

Console
RS232

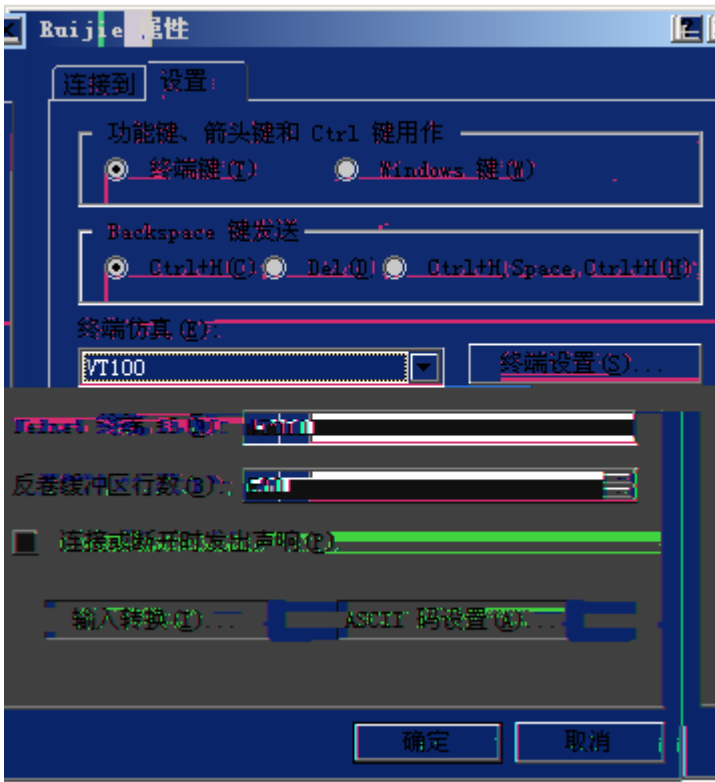
AC
RG-WS7880



4-3



4-4



RG-WS7880

RG-WS7880

-
-
-

RGRWS7880

■ RG-WS7880

" "

■

RG-WS7880

RG-WS7880

RG-WS7880

```
*****
Boot 1.2.6-00386-g6849a86 (Build time: Oct 13 2014 - 17:40:17)

DRAM: 16 GiB
NAND: 512 MiB
Flash: 8 MiB
SETMAC: Setmac operation was performed at 2015-03-04 16:42:48 (version: 11.0)
Press Ctrl+C to enter Boot Menu
Bootloader: Done loading app on coremask: 0xffffffff
Starting Devices Initializations... [ OK ]

adding user rgosm...
adding user guest...
adding user sslvpn...
adding user postgres...
insmod: cannot insert `/sbin/rg-console.ko': File exists (-1): File exists*Mar  4 16:46:37: %SYS-5-AC_POWER_ON:
System coldstart.

Press RETURN to get started
Ruijie>
```

RG-WS7880



RG-WS7880

RG-WS7880
