





I

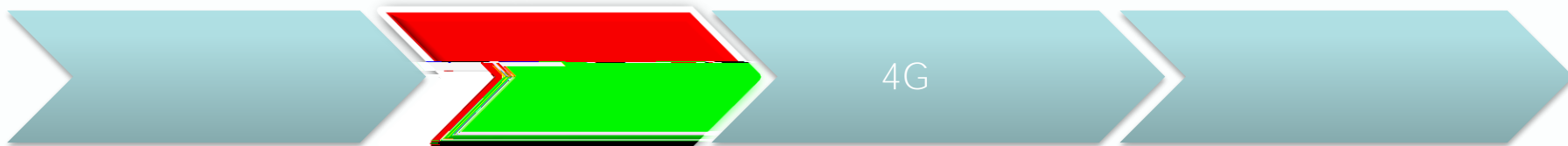


-10 ~60

-40~85

10%~90%RH





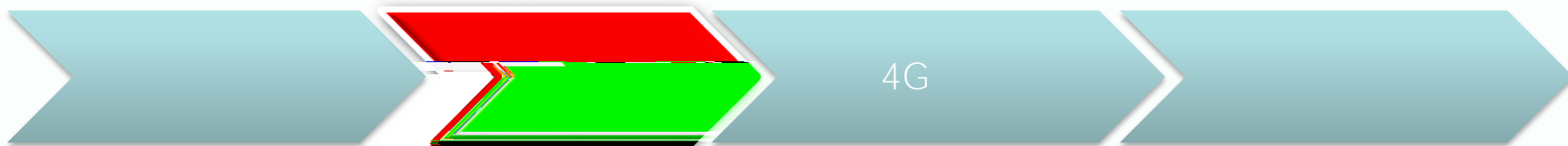
RSR820

30mm

2



I



19

RSR820

DIN

RSR820-T

DIN



DIN

I



10cm









" ON "

PWR

1

WEB

PC

PC

WAN0 GE1-GE4

PC IP

192.168.1.2~ 192.168.1.254

255.255.255.0

192.168.1.1

192.168.1.1

WEB

admin/admin

欢迎使用 DSR 路由器 WEB 管理系统

登录  
请输入您的用户名和密码:

**Ruijie**

用户名:

密码:

登录

[忘记密码怎么办?](#)

在线客服



2

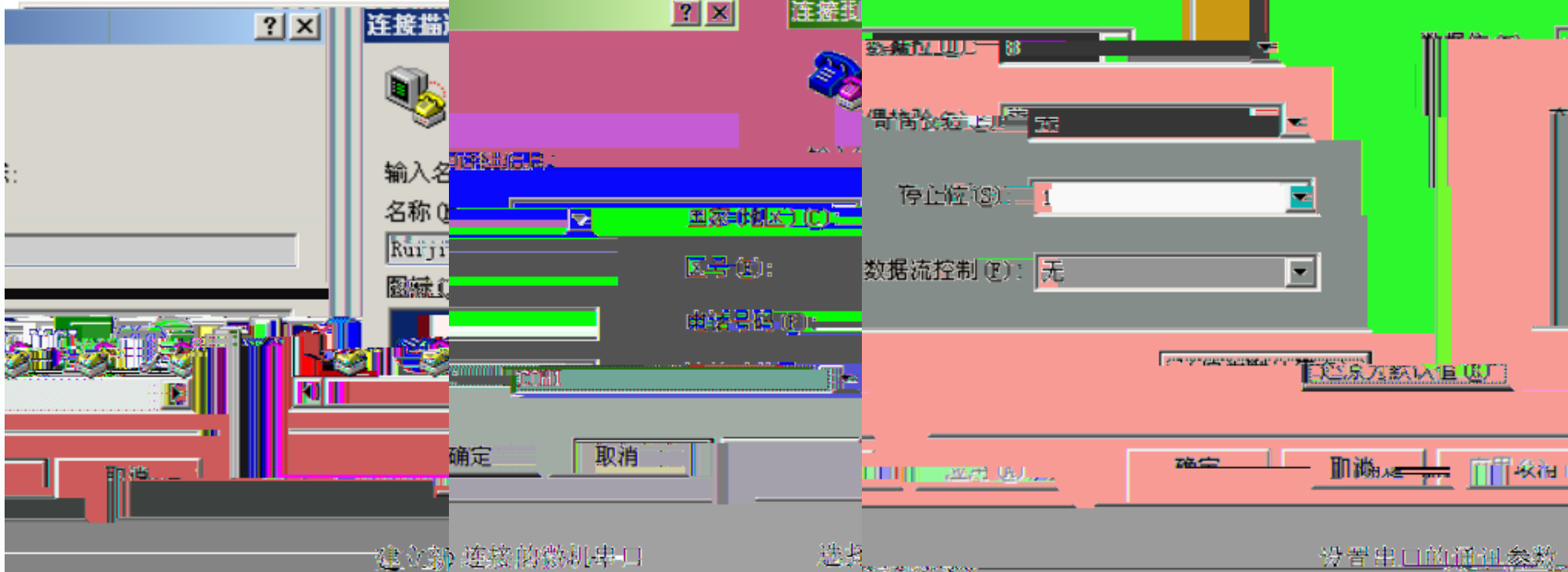
CLI

PC

Windows

RS232

Console



建立新连接的微机串口


选择

设置串口的通讯参数



Ruijie>	User EXEC			
Ruijie#	Privileged EXEC		enable	
Ruijie(config)#	Global configuration	terminal	configure	
Ruijie(config-if)#	Interface configuration		interface	
Ruijie(config-vlan)#	Config-vlan VLAN	vlan_id	vlan	VLAN





```
Router(config)#ip route 0.0.0.0 0.0.0.0 cellular 0/0 // 4G
```

```
Ruijie(config)#exit //
```

```
Ruijie#write // " write"
```

```
Ruijie#show running-config // " show running-config "
```

[www.ruijie.com.cn](http://www.ruijie.com.cn)

[www.ruijie.com.cn/service.aspx](http://www.ruijie.com.cn/service.aspx)

[support.ruijie.com.cn](http://support.ruijie.com.cn)

[webchat.ruijie.com.cn](http://webchat.ruijie.com.cn)

4008-111-000