

©2013-2022



1

RG-WALL 1600-S3700 V2.0

IPSec SSL VPN
IPv4 IPv6

NAC SSL

Web

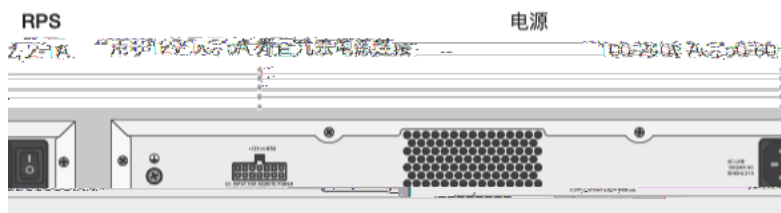
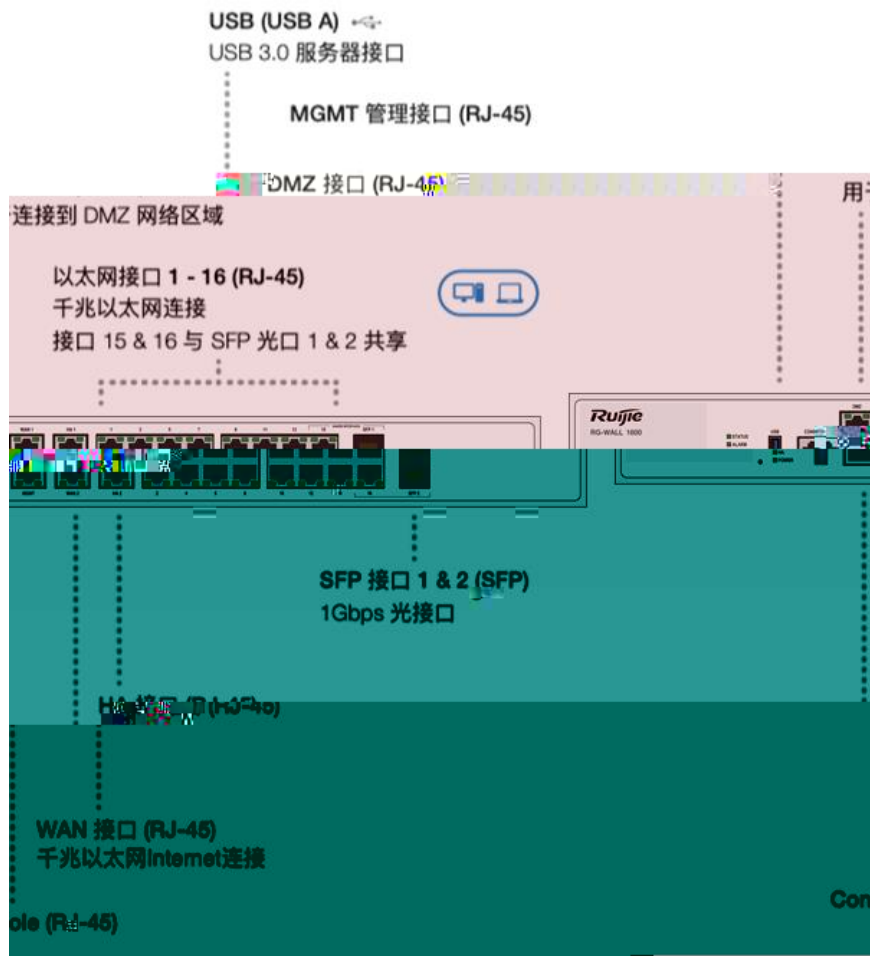
RG-WALL 1600-S3700 V2.0

RG-WALL 1600-S3700 V2.0

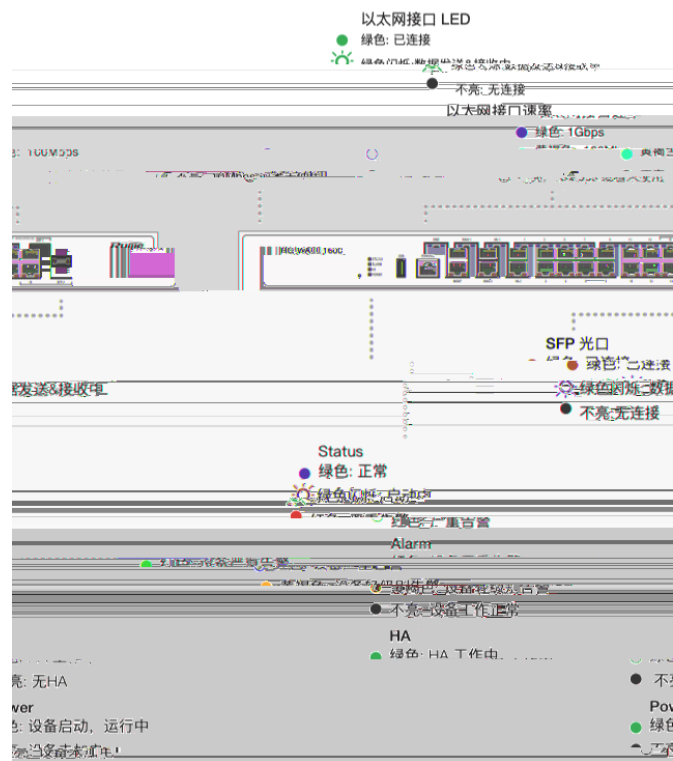
1.1 RG-WALL 1600-S3700 V2.0

	RG-WALL 1600-S3700 V2.0
	0 to 40°

RG-WALL 1600-S3700 V2.0



RG-WALL 1600-S3700 V2.0 LED



1~10

3.8

2.1.5

RG-WALL 1600-S3700 V2.0

2.2

RG-WALL 1600-S3700 V2.0

2.2.1

RG-WALL 1600-S3700 V2.0

RG-WALL 1600-S3700 V2.0

RG-WALL 1600-S3700 V2.0

2.2.2

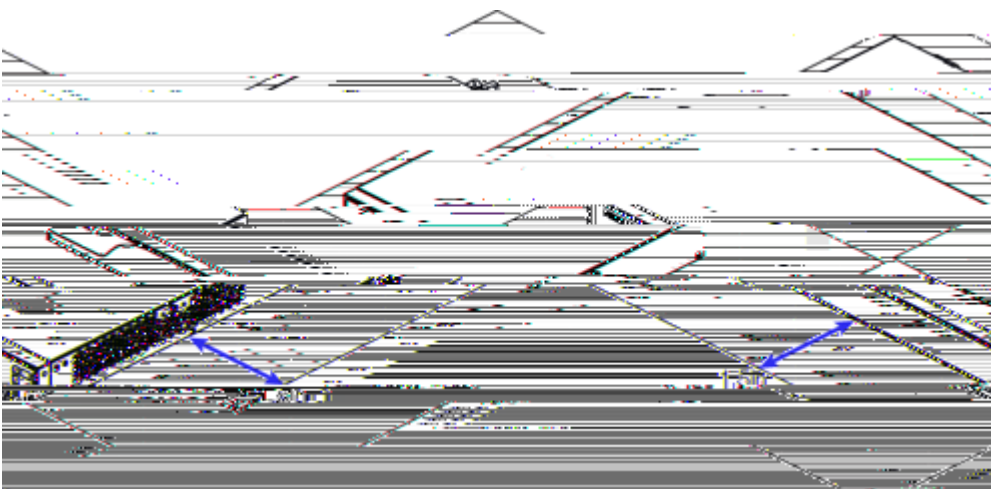
RG-WALL 1600-S3700 V2.0

2-2

2-3

3.8cm

2-1 RG-WALL 1600-S3700 V2.0



2.2.3

RG-WALL 1600-S3700 V2.0

RG-WALL 1600-S3700 V2.0

0°C-40°C	20%-90%
----------	---------

1.5M

0.4M

2.2.4

µm	0.5	1	3	5
/	1.4 x 10	7 x 10	2.4 x 10	1.3 x 10

RG-WALL 1600-S3700 V2.0

	mg/m ³	mg/m ³
	0.2	1.5
	0.006	0.03
	0.04	0.15
	0.05	0.15
	0.01	0.3

2.2.5

RG-WALL 1600-S3700 V2.0

RG-WALL 1600-S3700 V2.0

100-240 VAC, 47-63 Hz

2.2.6

RG-WALL 1600-S3700 V2.0

2.2.7 EMI

2.3

2.4

RG-WALL 1600-S3700 V2.0

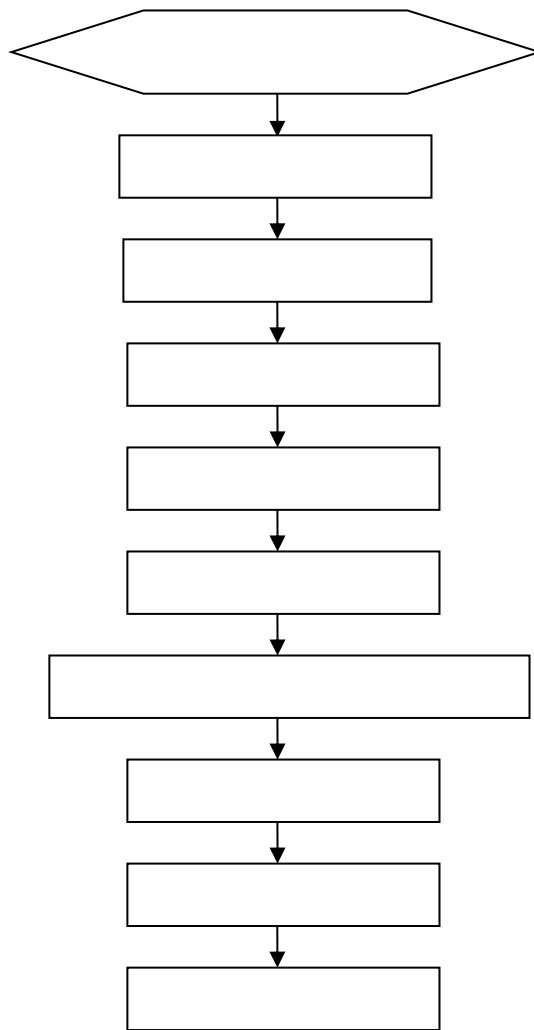
2.5

	2	USB	2	Console	8	4
		2 SFP				

3

RG-WALL 1600-S3700 V2.0

3.1



3.2

RG-WALL 1600-S3700 V2.0

RG-WALL 1600-S3700 V2.0
S3700 V2.0

RG-WALL 1600-

3.4

RG-WALL 1600-S3700 V2.0

10mm

- 1) RG-WALL 1600-S3700 V2.0
- 2) RG-WALL 1600-S3700 V2.0
- 3) RG-WALL 1600-S3700 V2.0 RG-WALL 1600-S3700 V2.0

3.5

16A

- 1)
- 2)

3

1.5

14AWG

3.6

- 1) RJ45 RJ45
- 2) ,
- 3) RJ45
- 4)

3.7

3) 3-7

- 1.
- 2. SFP
- 3.
- 4. SFP
SFP

- 5. 3-7
- 6.

SFP

SFP

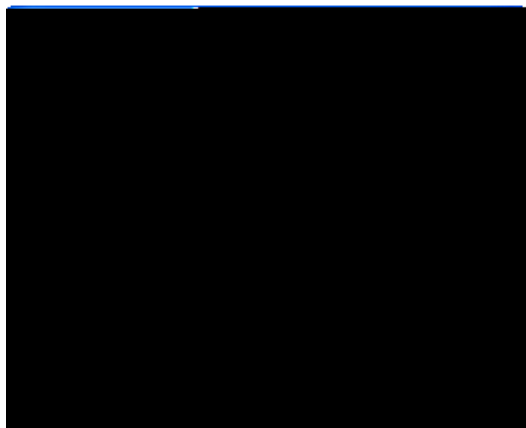
3.10

SFP

1)

4) “ ”.

4-3

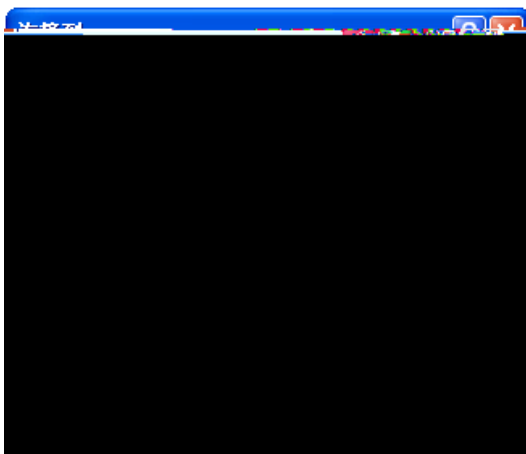


4-2

5)

< >

4-4



4-3

6) .

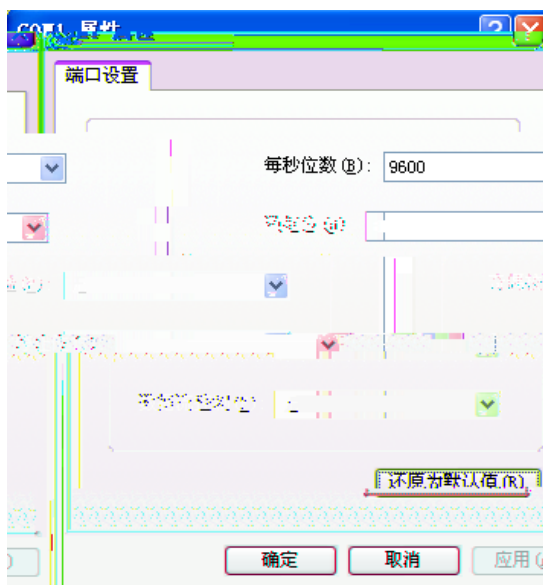
8

< >

1

4-5

9600



4-4

4.2

A

1000BASE-T/100BASE-TX/10BASE-T

MDI/MDIX Crossover

1000BASE-T

IEEE 802.3ab

100-ohm 5

5

UTP

STP

A 4



B

RG-WALL 1600-S3700 V2.0

19

7

5

7

10

SFP+

5

10

25

20

10

1

mm	mm
10	80~150
10~30	150~200
30	200~300