



RG-Scan

V1.0

©2018





1

1.1 RG-Scan 2000E

2

2.1

2.2

4.3.5

4.3.6 License

4.3.7

5

5.1

5.2

6

6.1

6.2

1

RG-Scan

RG-RG-Scan

	*	430*450
		12kg
		0-40
		-20~70
		5%~90%
		2000m

RG-Scan 2000E



1 RST

2 PWR power HDD

3 Console RJ45

4 USB

5 6

6 1 5

RG-SEC-8GE 8      RG-SEC-8SFP 8      RG-SEC-4GE4SFP 4      4      RG-SEC-2XEF  
 2 SFP+

<5s

>=5s

	PWR		

	HDD		
		Link	10M
		Data	

## 2

### 2.1

RG-Scan	1
	1
	2
	1

### 2.2

---



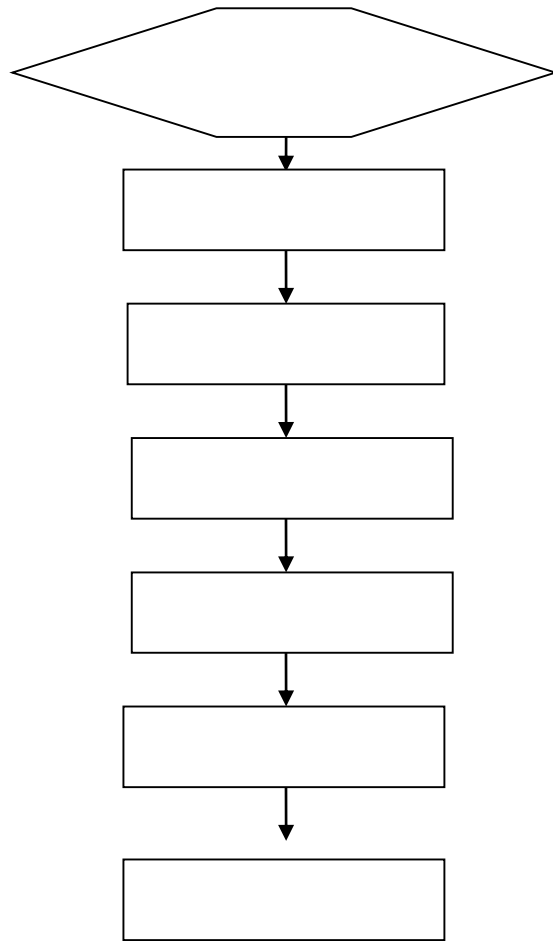
---



---

a



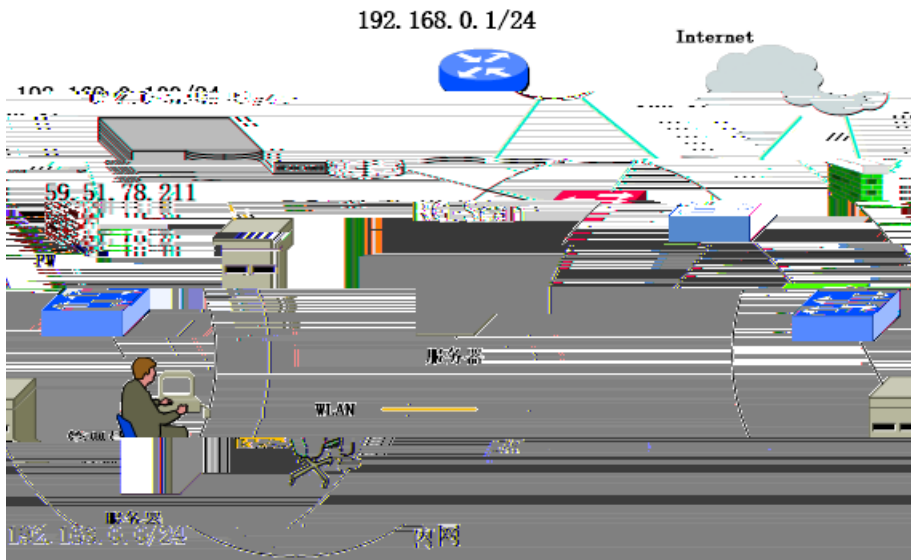




4

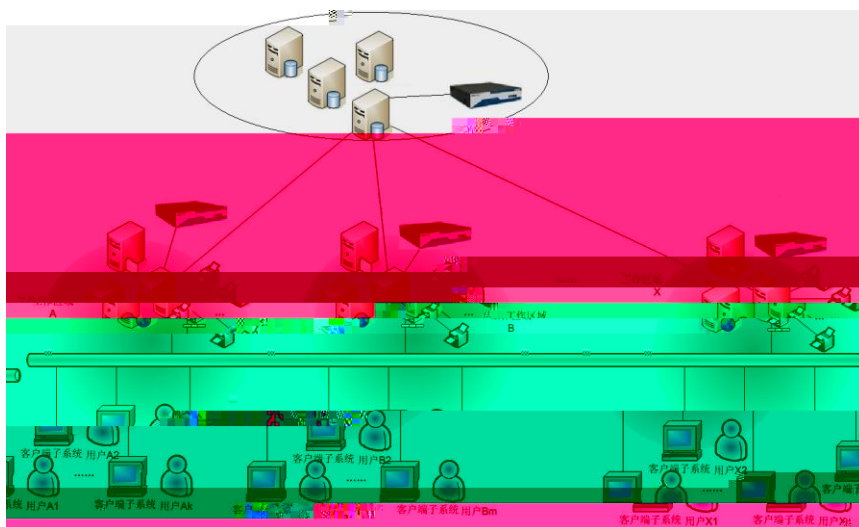
4.1

RG-Scan



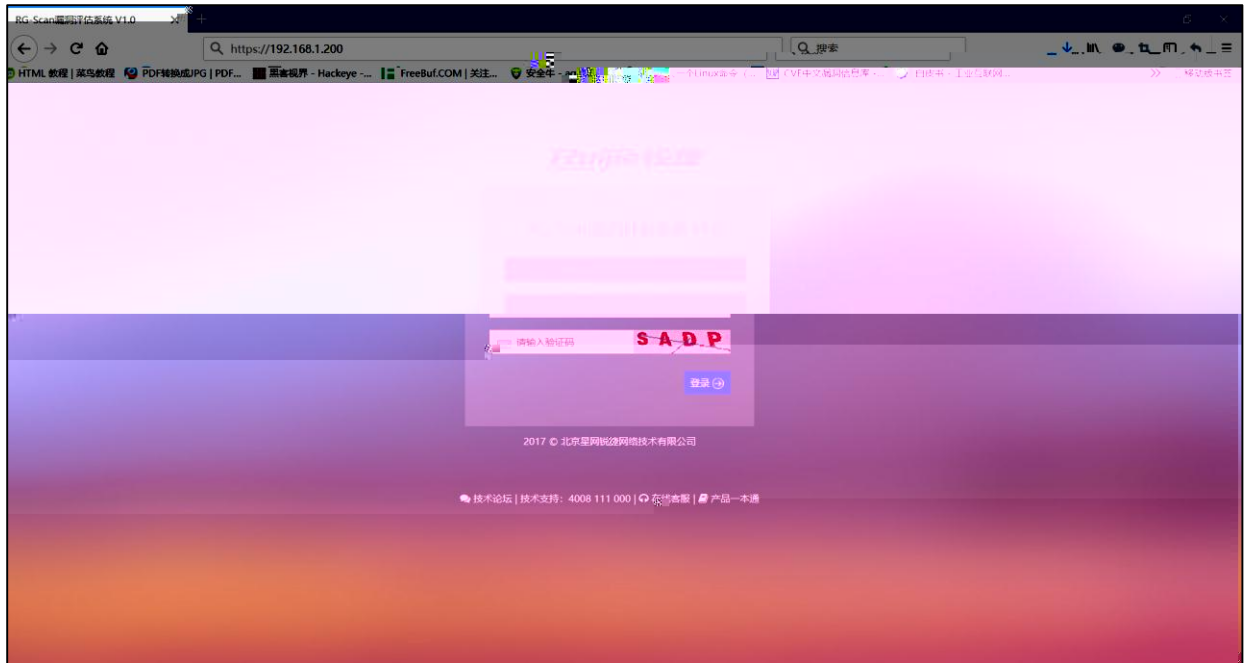
RG-Scan

RG-Scan



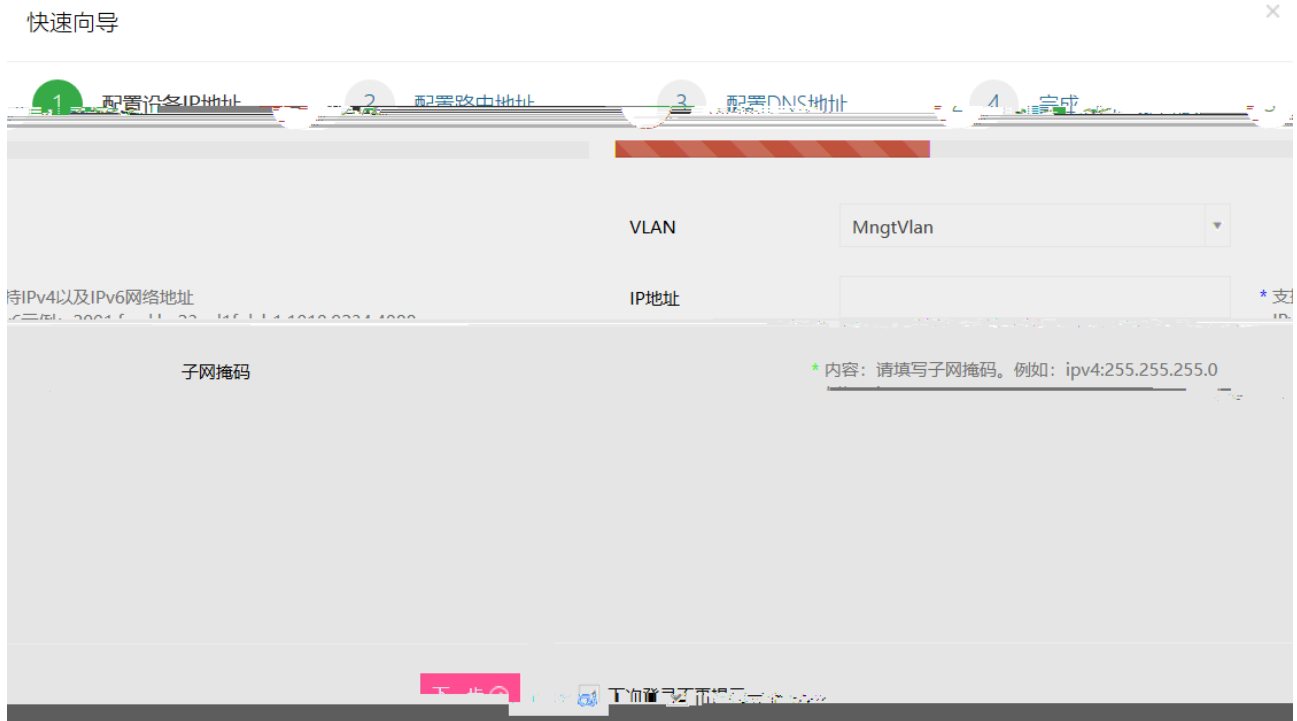






#### 4.3.4

1) IP

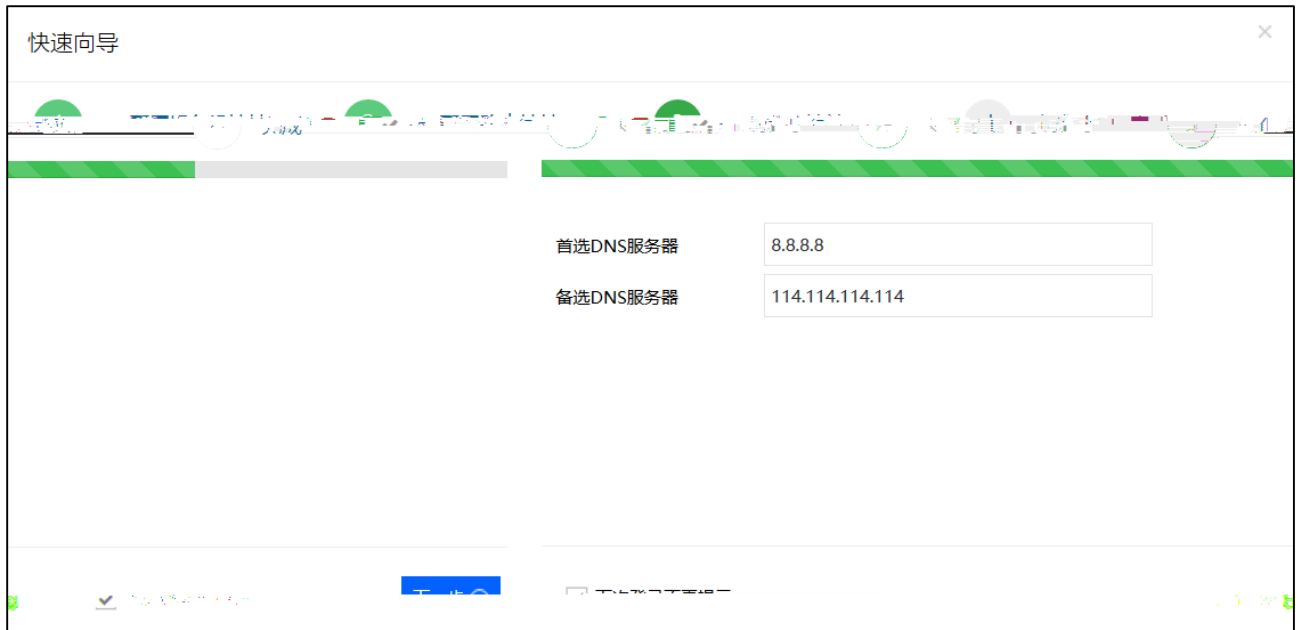


### 1.2.3 IP

2)

## 1.2.4 IP

### 3) DNS



## 1.2.5 DNS

### 4)





## 4.3.7

1. Ping Ping
  - a.
  - b. IP
2.
  - a. 80
  - b. httpserver
3. Ping WGET RG-Scan

## 5

### 5.1

PWR

HDD

BYP

Bypass

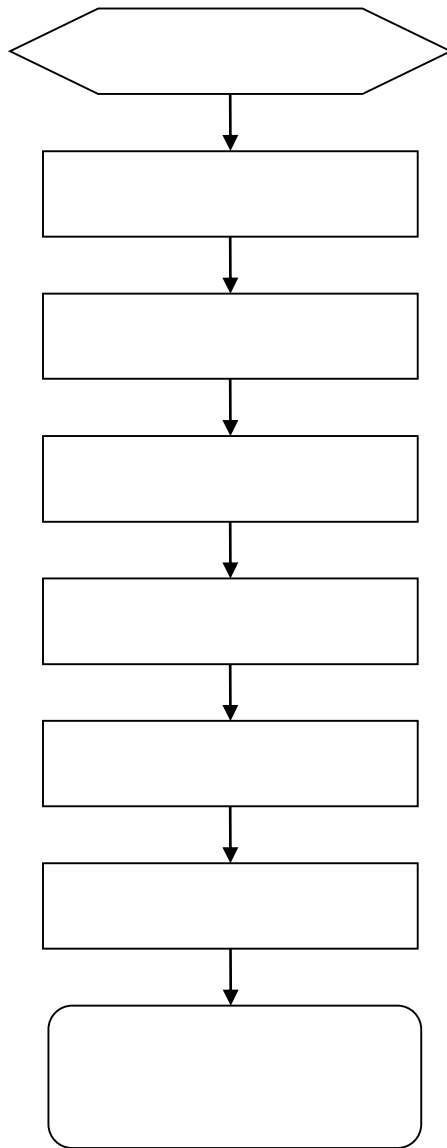
ACT

Link



6

6.1



## 6.2

1

RG-Scan

RG-Scan

RG-Scan

l i c e n s e

l i c e n s e

RG-Scan

l i c e n s e

RG-Scan

l i c e n s e

2 SSH

IP

SSH

IP

SSH

PC

SSH

IP

3

account

4 license

6

admin

ssh