



copyright © 2025



<https://www.ruijie.com.cn>

<https://www.ruijie.com.cn/fw/>

7\*24h

<https://ocs.ruijie.com.cn>

7\*24h

4008-111-000

--

<https://www.ruijie.com.cn/special/fw/tool/xryf/>

4008111000@ruijie.com.cn

doc@ruijie.com.cn



APP



/



	.....	1
1	.....	4
1.1	.....	4
1.2	.....	4
1.3	.....	7
1.4	.....	8
1.4.1	.....	8
1.4.2	.....	8
1.4.3	.....	9
1.4.4	.....	9
1.4.5	.....	10
1.4.6	.....	10
1.5	.....	10
2		



6.2.4	.....	24
6.2.5	.....	25
6.2.6	.....	25
6.2.7	.....	25
7	.....	26
7.1	.....	26
7.2	.....	28
7.3 DC		

---

RG-AP100  
AP

RG-AP100

402.11ax

RG-AP100

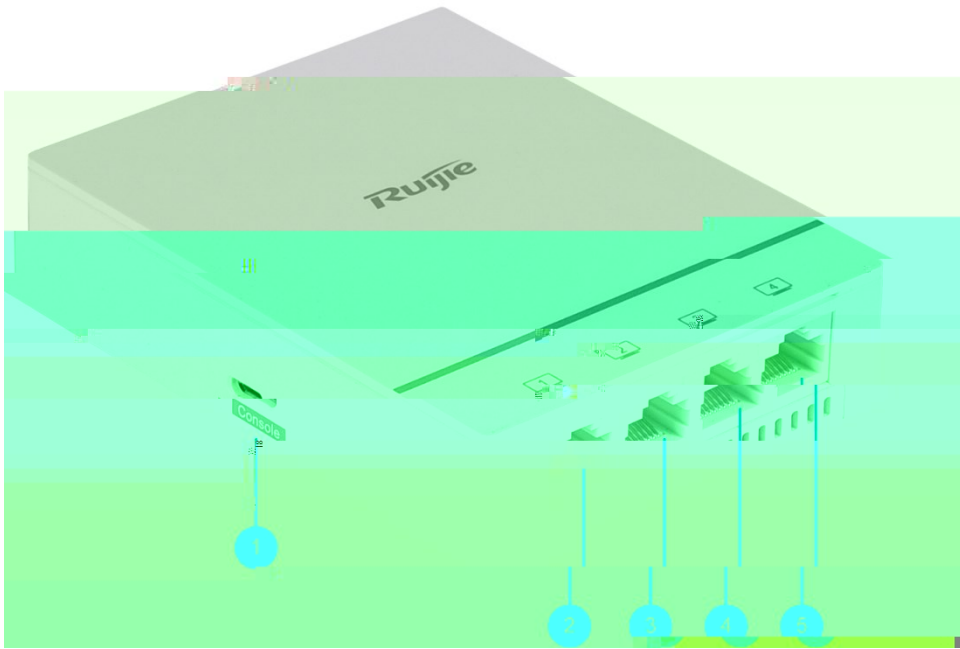
2.4Gbps

802.11ax

2.4G

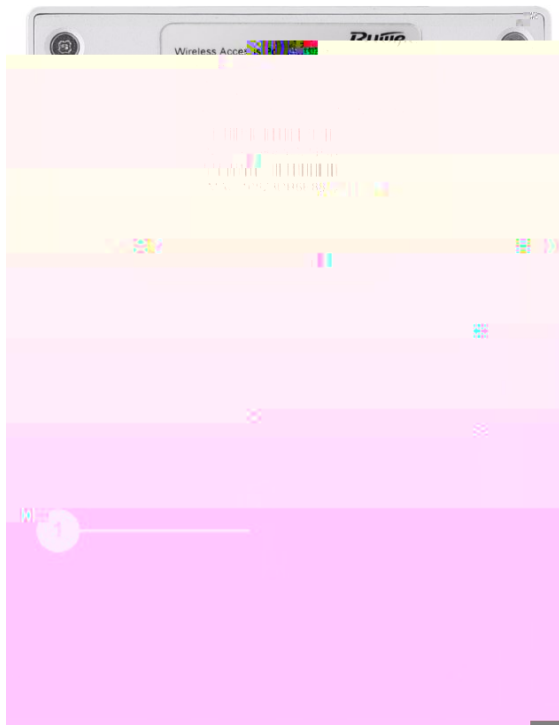
575Mbps

5G



1	Console	
2-5	LAN	





1	WAN/PoE	IEEE802.3af 802.3at PoE



1	RG-AP100	1	
2		1	
3		1	
4	M4×40	2	

---

× ×	86mm×116mm×24.1mm +18.9mm
	0.3kg
	86

	802.11b BPSK QPSK CCK
	802.11a/g/n BPSK QPSK 16-QAM 64-QAM 256-QAM
	802.11ac BPSK QPSK 16-QAM 64-QAM 256-QAM
	802.11ax BPSK QPSK 16-QAM 64-QAM 256-QAM 1024-QAM

802.11b -91dBm(1Mbps) -90dBm(5Mbps) -87dBm(11Mbps)

802.11a/g -89dBm 6Mbps -82dBm 24Mbps -78dBm  
36Mbps -72dBm



PoE

802.3af

AP

	-10°C 45°C -40°C 70°C 3000~5000 220 1
	5%RH~95%RH 5%RH~95%RH

	IEC 60950-1 IEC 62368-1 GB 4943.1
EMC	EN 301489 EN 55032 EN 55035



FIT AP FAT AP

--	--	--

	0.2 0.2	FIT AP    MACC AP            AP
	3 1	AP
	0.2 0.2	FIT AP                    AP                                    AP





---

0.5um		/m <sup>3</sup>	1.4 × 10 <sup>7</sup>
0.5um	1um	/m <sup>3</sup>	7 × 10 <sup>5</sup>
1um	3um		

---

	( )



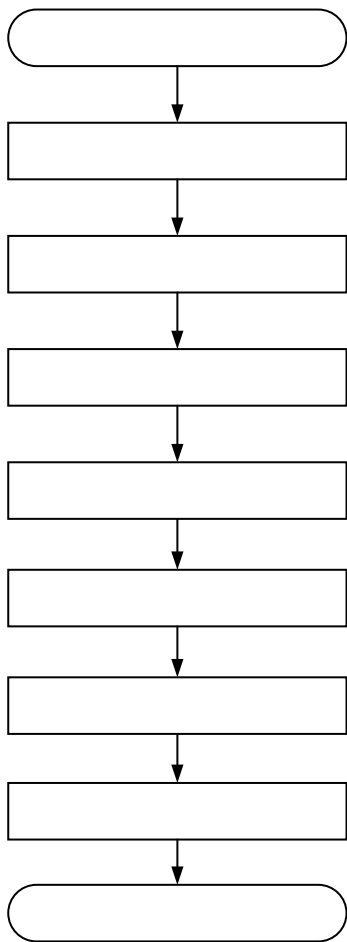
RG-AP100

---

---

RG-AP100

---



---

AP



86

AP

JB/T 8593-2013

M4

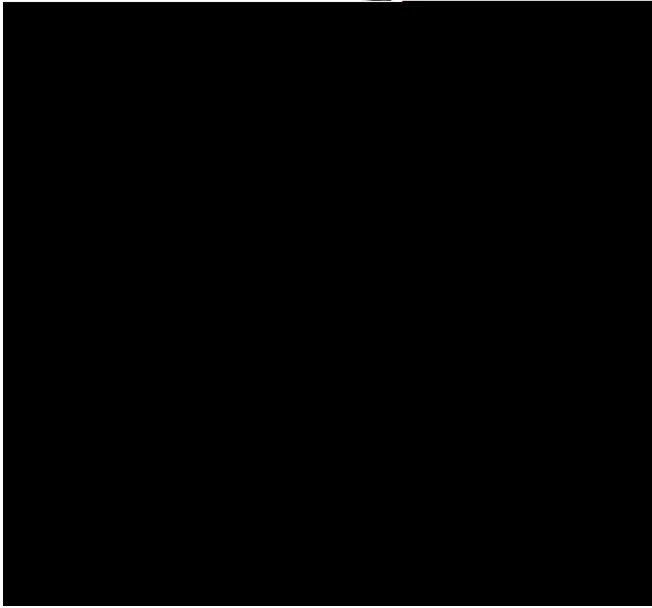
10±1kgf cm

---

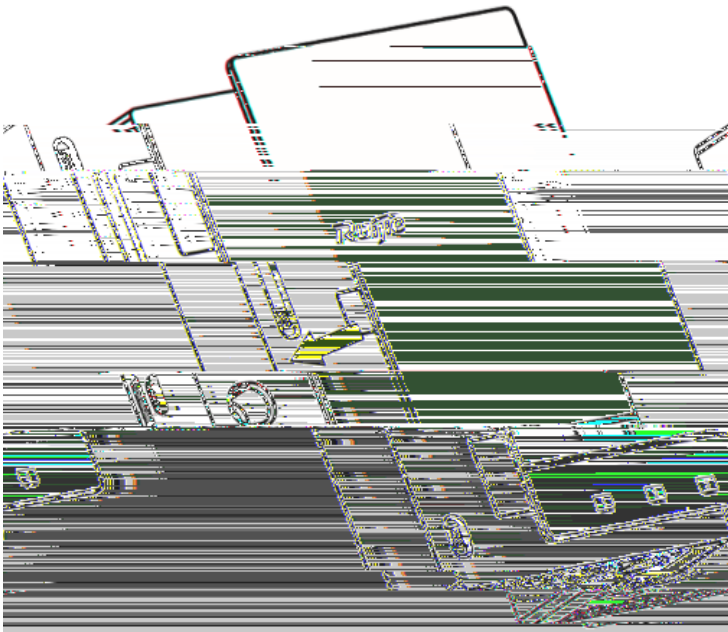
(1)

86





(4) " Ruijie" Logo




(5)



---

(2)

---

	AP	LAN/PoE	AP	<a href="#">7.1</a>
 Console	9600	8	1	

---

---

DC PoE AP

DC PoE AP

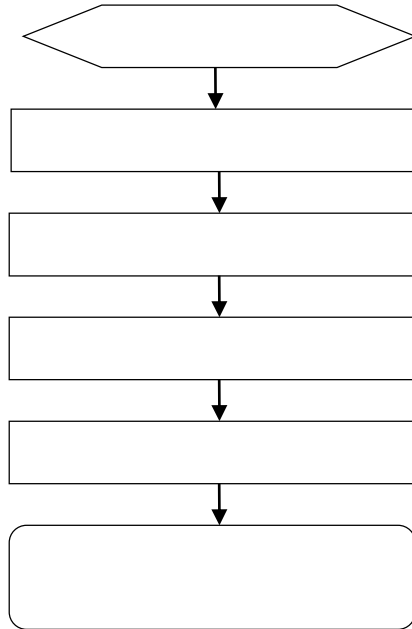
AP AC

PC AP

PC PoE



AP      AP            AP  
AP      AP            AC



PoE

PoE

802.11af

DC

1

CAPWAP                      AC    AP              AC

(1)

(2)

(3)      AP

(4)                                      AP



4 5 7 8	Not Used	Not Used

100BASE-TX/10BASE-T





---

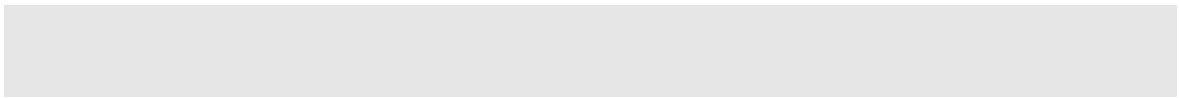
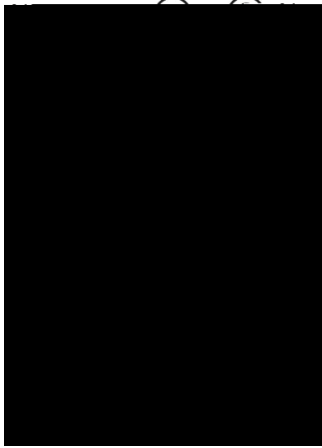
7-6



220V

-48V

7-7



10	80~150
10~30	150~200
30	200~300

---

DC 12V

1A

2.1mm	5.5mm	10mm	

$\pm 0.2\text{mm}$

±0.2

